

**SPENCER DRIVE
HAMPSTEAD GARDEN SUBURB
LONDON
N2**



Bargets Estate Agents

CHARMING HAMPSTEAD GARDEN SUBURB FAMILY HOME



A lovely 6 bedroom detached family home with off street parking located on this desirable road on the south side of Hampstead Garden Suburb.

The property

offers excellent family accommodation, is beautifully presented throughout and benefits from lateral living over three floors only.

The Property has just been painted throughout.

ACCOMMODATION & AMENITIES

DOUBLE RECEPTION ROOM / TV ROOM / KITCHEN/BREAKFAST ROOM / GUEST CLOAKROOM / UTILITY ROOM / MASTER BEDROOM WITH EN-SUITE BATHROOM / 5 FURTHER BEDROOMS / BATHROOM / SHOWER ROOM / GARDEN / OFF STREET PARKING

£2,350 Per Week
Subject to Contract









Spencer Drive, N2

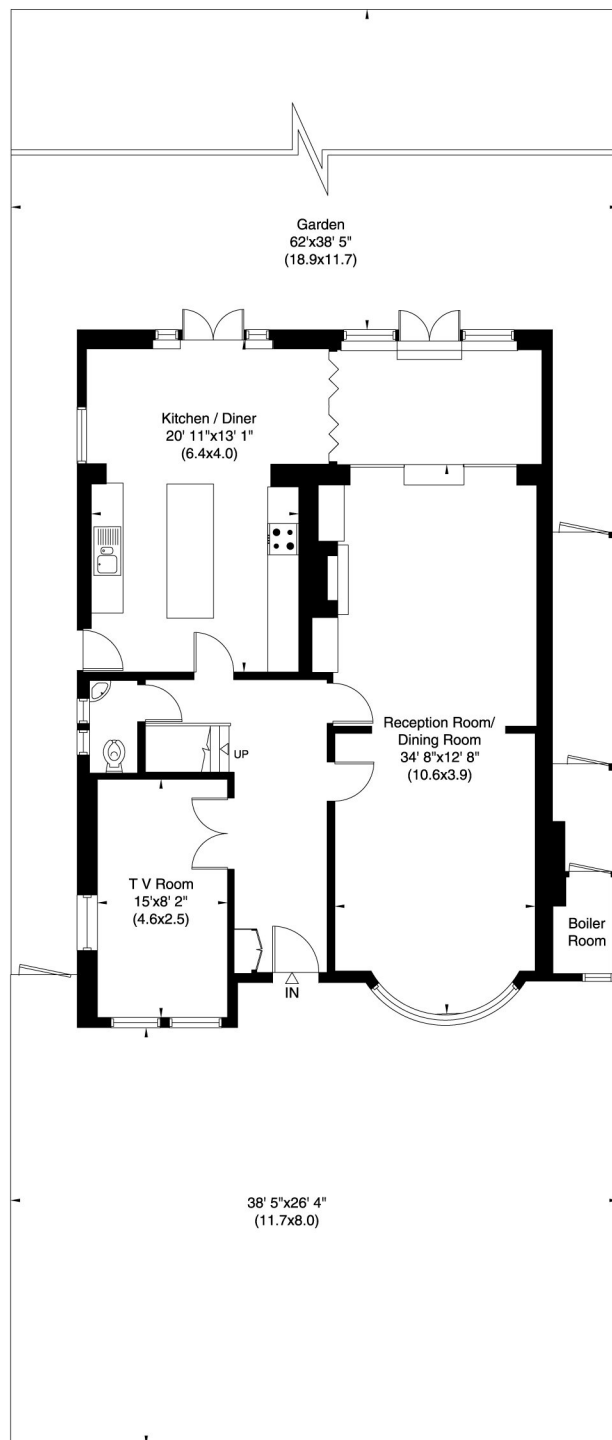
Gross internal area (approx.)

281 Sq m (3025 Sq ft) Including Under Eaves, Under 1.5m and Boiler Room

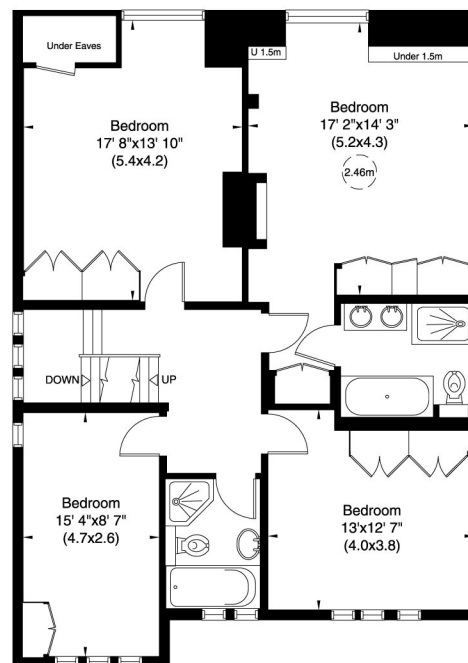
248 Sq m (2669 Sq ft) Excluding Under Eaves, Under 1.5m and Boiler Room

For identification only, Not to Scale

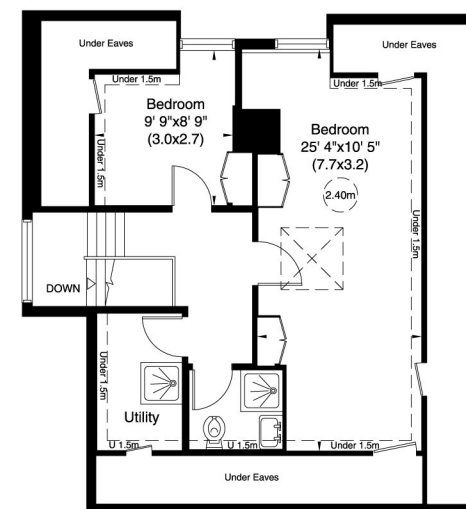
capital 020 8671 7722



Ground Floor



First Floor



Second Floor