



# Townshend Court

Allitsen Road, NW8

£2,750 per month  
(£634.62 per week)

A light and bright apartment with access to a communal garden located just around the corner from St John's Wood High Street and Regent's Park.

**CHESTERTONS**



# Townshend Court

## Allitsen Road, NW8

- Apartment in Purpose Built Mansion Block
- 2 Bedrooms, 1 Bathroom
- Communal Gardens
- Very Close to St John's Wood High Street & Regent's Park



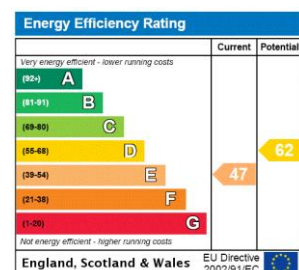


A light and bright two bedroom apartment set in a popular block in the heart of St John's Wood.

The property comprises a lounge/dining room, separate fully fitted kitchen, bathroom, large double bedroom with fitted storage, further second double bedroom and large communal garden.

The property is located moments away from the underground station (Jubilee Line), St John's Wood High Street and Regent's Park.

**Minimum Term:** 12 months  
**Deposit Required:** £3,173.08  
**Local Authority:** City of Westminster  
**Council Tax Band:** E  
**EPC Rating:** D  
**Furnished**



### *Chestertons St John's Wood Lettings*

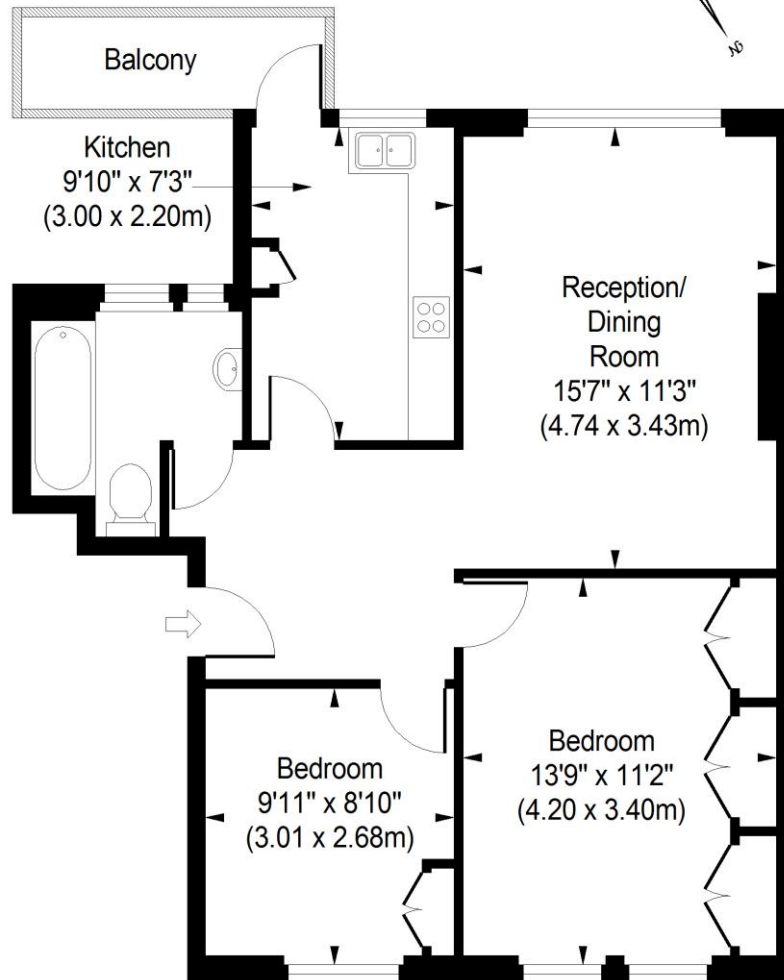
105 St. John's Wood Terrace  
 London  
 NW8 6PL  
[stjohnslettingsusers@chestertons.co.uk](mailto:stjohnslettingsusers@chestertons.co.uk)  
 02030408622  
[chestertons.co.uk](http://chestertons.co.uk)

Additional tenant charges apply (fees apply to non-AST tenancies only)  
 Tenancy Agreement Fee: £300  
 References per Tenant/Guarantor: £60  
 Inventory check (approx. £100 – £250 inc. VAT)  
[chestertons.co.uk/property-to-rent/applicable-fees](http://chestertons.co.uk/property-to-rent/applicable-fees)

## Townshend Court, NW8

Approximate Gross Internal Area

639 sq ft / 59.36 sq m



### 4th Floor

ILLUSTRATION FOR IDENTIFICATION PURPOSES ONLY

ALL MEASUREMENTS ARE MAXIMUM, AND INCLUDE WINDOW BAYS AND WARDROBES WHERE APPLICABLE  
THIS PLAN MUST NOT BE REPRODUCED BY ANY OTHER PERSON WITHOUT PERMISSION

