



**COUNTRY**  
PROPERTY



**Stonewalls**

Acton Turville

£880,000



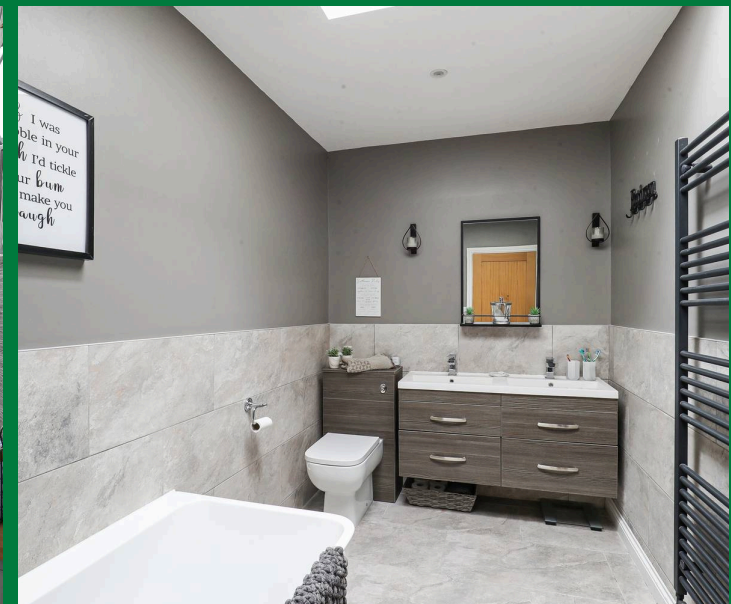
# Stonewalls

Sodbury Road, Acton Turville, GL9 1HD

Perfection, in this 5 bedroom single storey residence that is bursting with contemporary design. Located in a peaceful setting within the Badminton village of Acton Turville, Stonewalls comprises a spacious family home with a gold standard for multi-generational living. The principle living rooms feel light-and-airy from the lofty ceilings, and bi-folding doors to effectively connect to the glorious outside. It backs on to fields behind, therefore both sections (main house, plus the annexe) enjoy lovely views out over the landscaped gardens to the Church in the distance which never get old. No stone has been left unturned in creating this property, so the new owners will just be able to move in and enjoy!

The light and airy accommodation within is laid out as the larger section entrance hall, generous kitchen family room, 4 bedrooms and family bathroom, then joined by the utility room the separate independent living accommodation includes a further kitchen living room, bedroom and shower room. Both sections overlook the landscaped gardens and countryside views beyond and are all on one level.

- Detached Bungalow
- Multi Generation Living
- 2 Open Plan Kitchen Living Rooms
- 5 Bedrooms & 2 Bathrooms
- Outbuilding/Workshop
- South Facing Rear Garden
- Driveway Parking For Seval Cars
- Energy Efficiency Rating tbc



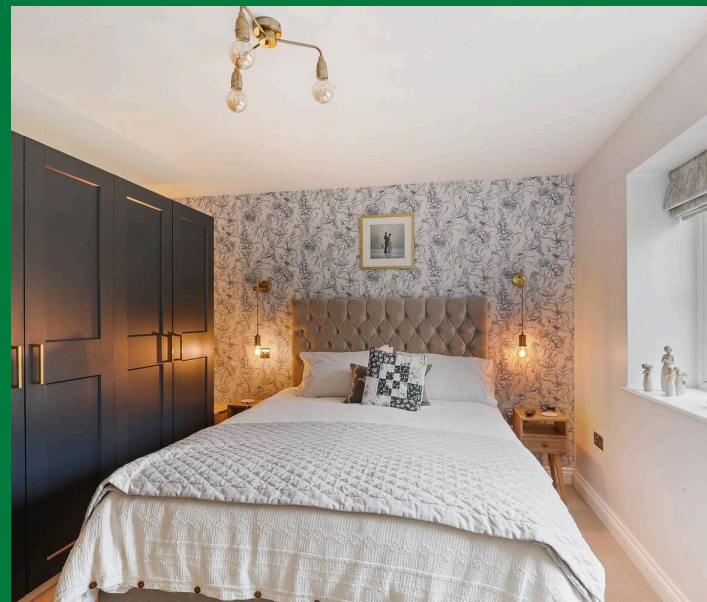
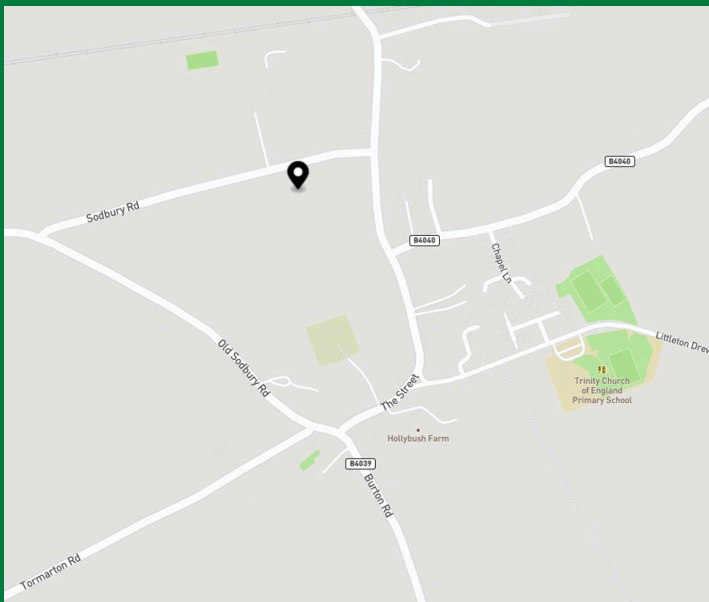


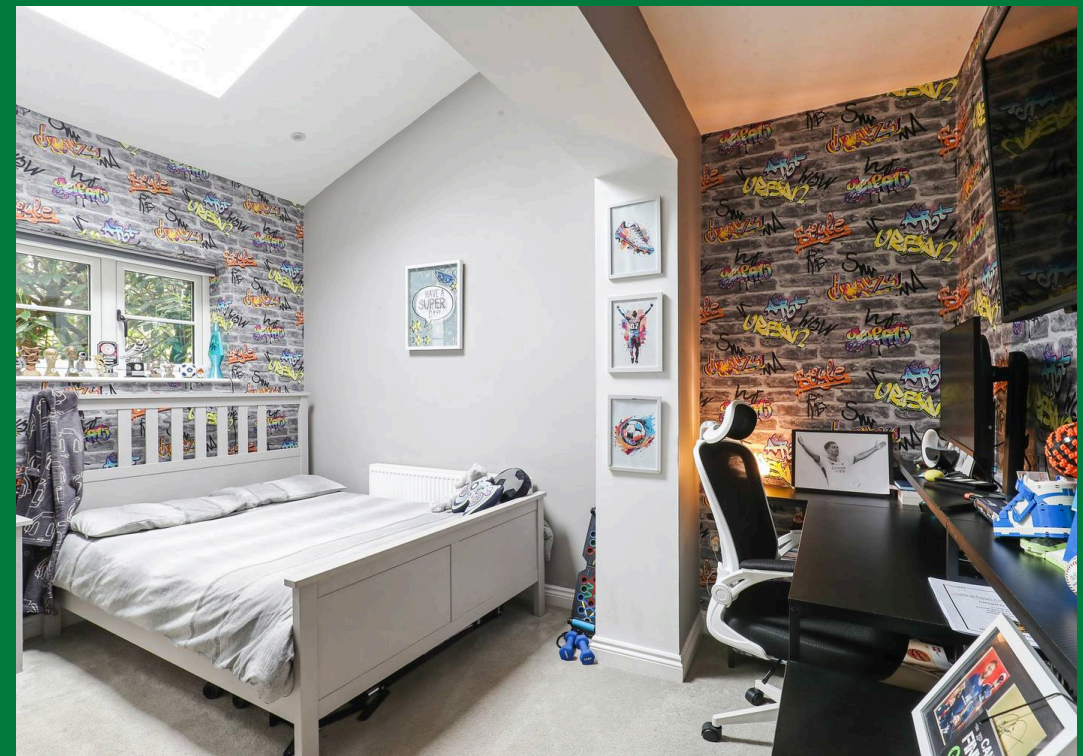
## Acton Turville

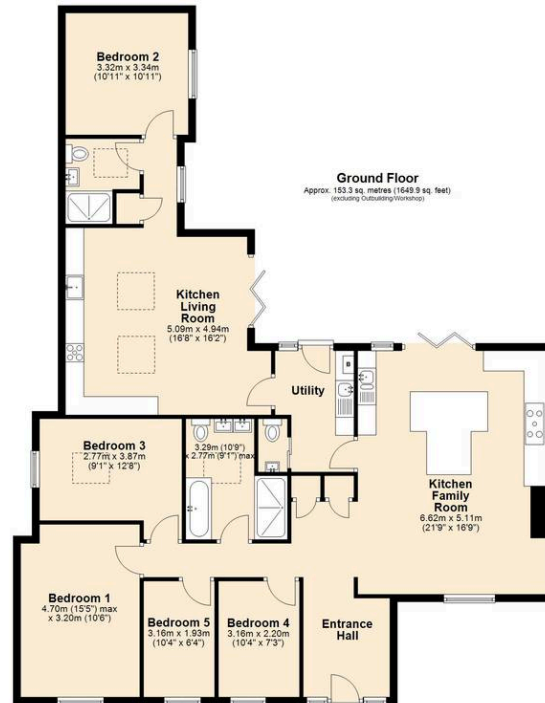
Acton Turville is a quiet country village on the southern tip of the Cotswold Hills within the Beaufort Hunt. There is a local public house, village shop/post office, church and the very popular Trinity CE Primary School. Acton Turville offers particularly convenient access to the M4 motorway junction 18 and to Bath, Bristol, Chippenham, Swindon, Tetbury, Malmesbury and Stroud.

Spacious 5 bed single-storey home in Acton Turville with annexe, landscaped gardens, countryside views, and modern design. Ideal for multi-generational living. Move-in ready. Council Tax band: D

Tenure: Freehold







Total area: approx. 153.3 sq. metres (1649.9 sq. feet)

This document includes only a general guide to the property and does not constitute any part of an offer or contract. Details, photographs, measurements, floorplans and distances are given as a guide only and must not be relied upon for the inclusion of any visible fixtures and fittings.

Disclaimer:- These particulars are set out as a general guide only and do not constitute any part of an offer or contract.

Details, photographs, measurements, floorplans and distances are given as a guide only and must not be relied upon for the inclusion of any visible fixtures and fittings.

Asking prices, rents, or other figures quoted are believed to be correct at the time of publication. They are presented in good faith but without any responsibility, must not be relied upon as statements or representations of fact, and any affected parties must satisfy themselves by inspection or otherwise as to the correctness of each of them by their solicitor prior to exchange of contracts.

We have not carried out a structural survey. Any services, appliances and fittings have not been tested. We recommend independent specialist advice be taken if in doubt, about these, or any liability for VAT in respect of any transaction relating to this property.

No person in the employment of Country Property has authority to make any representation or warranty whatsoever, in relation to this property. We retain the copyright to all promotional material used to market this property.



**COUNTRY**  
PROPERTY

The Grange, 73 Broad Street, Chipping Sodbury  
South Gloucestershire, BS37 6AD

**01454 321339**

[www.countryproperty.co.uk](http://www.countryproperty.co.uk)  
[enquiries@countryproperty.co.uk](mailto:enquiries@countryproperty.co.uk)