



## HAYDON PARK ROAD, SW19

£2,500 per month

Two bedrooms  
Ground floor  
On-street parking  
Refurbished  
Furnished  
Energy rating: c

@marshandparsons  
marshandparsons.co.uk

MARSH &  
PARSONS



# ABOUT THE PROPERTY

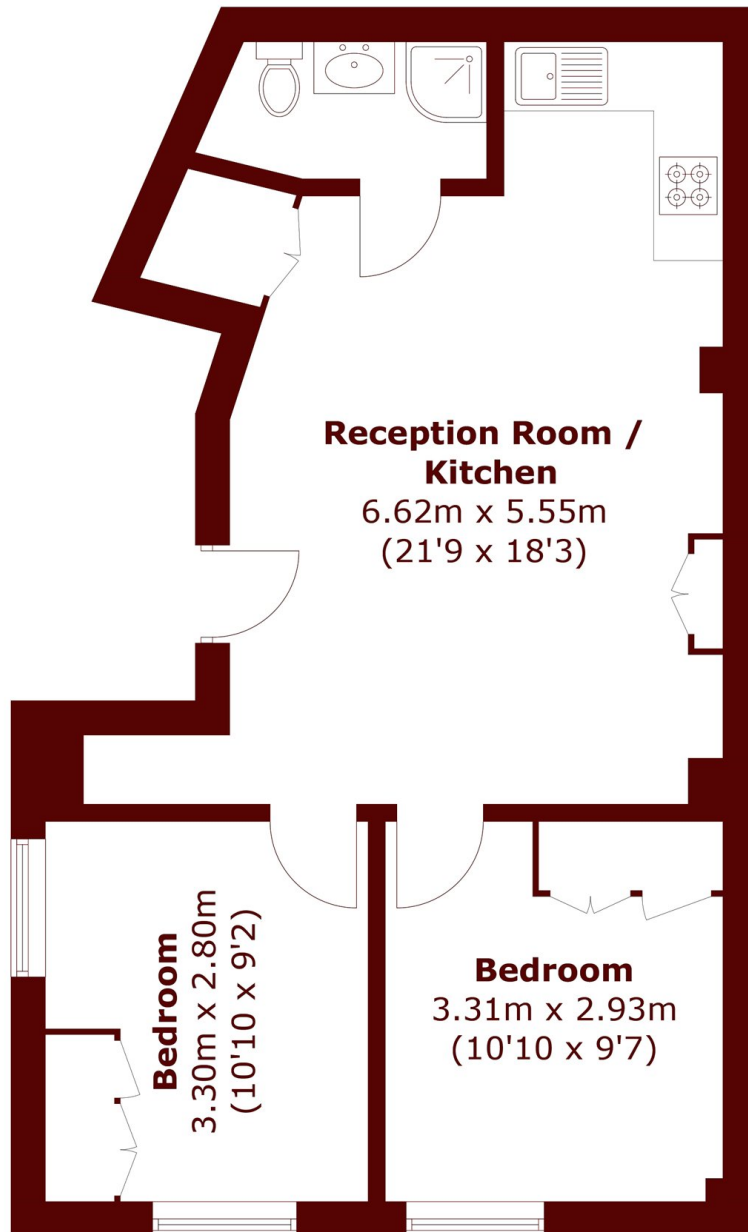
A two bedroom one bathroom ground floor apartment located on Haydon Park Road.

The property has been recently refurbished and has two good size bedrooms, open plan living room and a front patio.

Centrally located in Wimbledon with excellent transport links.



# STEP INSIDE HAYDON PARK ROAD



Total area (approx.): 50.0 sq. m (538.2 sq. ft)

Wimbledon  
020 8879 6661

Energy Rating: C We aim to make our particulars both accurate and reliable. However, they are not guaranteed; nor do they form part of an offer or contract. If you require clarification on any points then please contact us, especially if you're traveling some distance to view. Please note that appliances and heating systems have not been tested and therefore no warranties can be given as to their good working order

MARSH &  
PARSONS