



Truro House, Mount Pleasant, London, WCX1

£4,650 pcm

- Fifth floor apartment
- 2 bedrooms
- 2 bathrooms
- Four private balconies
- Separate storage room
- 958 sq ft
- Ten Pin Bowling & Pool Room, Private Cinema
- Pool, gym and spa facilities
- 12th Floor residents' lounge, dining room and roof terrace
- 24-hour concierge
- Great transport links

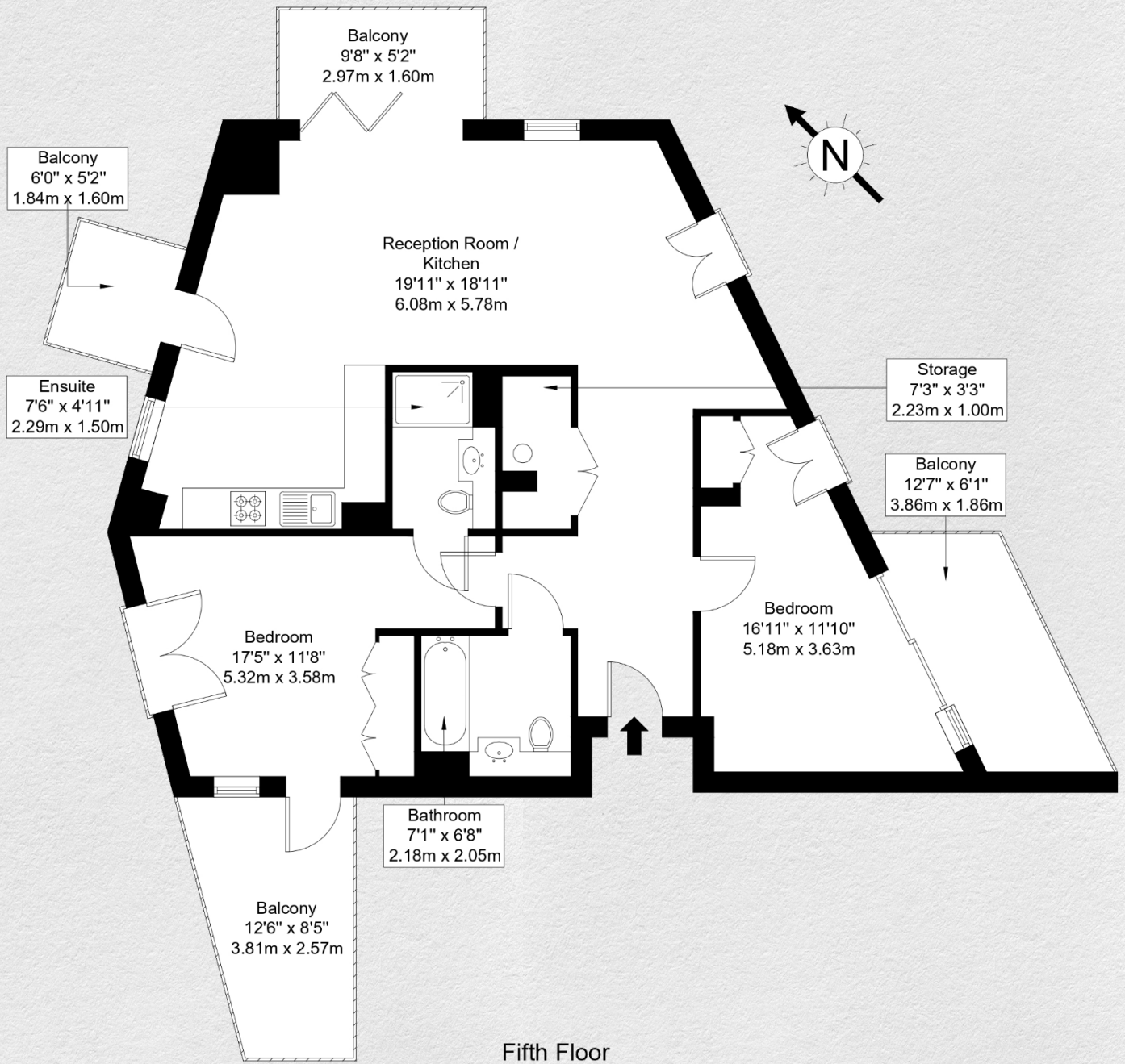
This 2-bedroom, 2-bathroom property comprises a spacious open-plan kitchen/dining/reception area leading onto 2 private terraces providing natural light throughout resulting in a fresh and bright feel. Both bedrooms include fitted wardrobes for extra storage with the master bedroom also being en-suite. A separate storage room also accessible from the main hallway.

The residents will further benefit from 24-hour concierge service, cinema, residents' courtyard and rooftop gardens, fitness centre, private dining room and terrace.

Postmark is the most connected neighbourhood the world capital has ever known and is within walking distance of 5 major tube stations: Russell Square, Holborn, Farringdon, Kings Cross & Chancery Lane, offering access to 7 tube lines.

Situated in a vibrant neighbourhood of Camden close to cafes and restaurants, the property provides brilliant access to education: minutes away from Christopher Hatton Primary School (Ofsted rating outstanding) and a couple of miles away from The Henrietta Barnett





Address:

Truro House, Mount Pleasant, London, WCX1

sq ft

958

bed

2

bath

2

*** For illustration purposes only. Could not be to scale. One-London aims to ensure accuracy but is not liable for any discrepancies.*