

Vincent Square, SW1P

£807 Per week

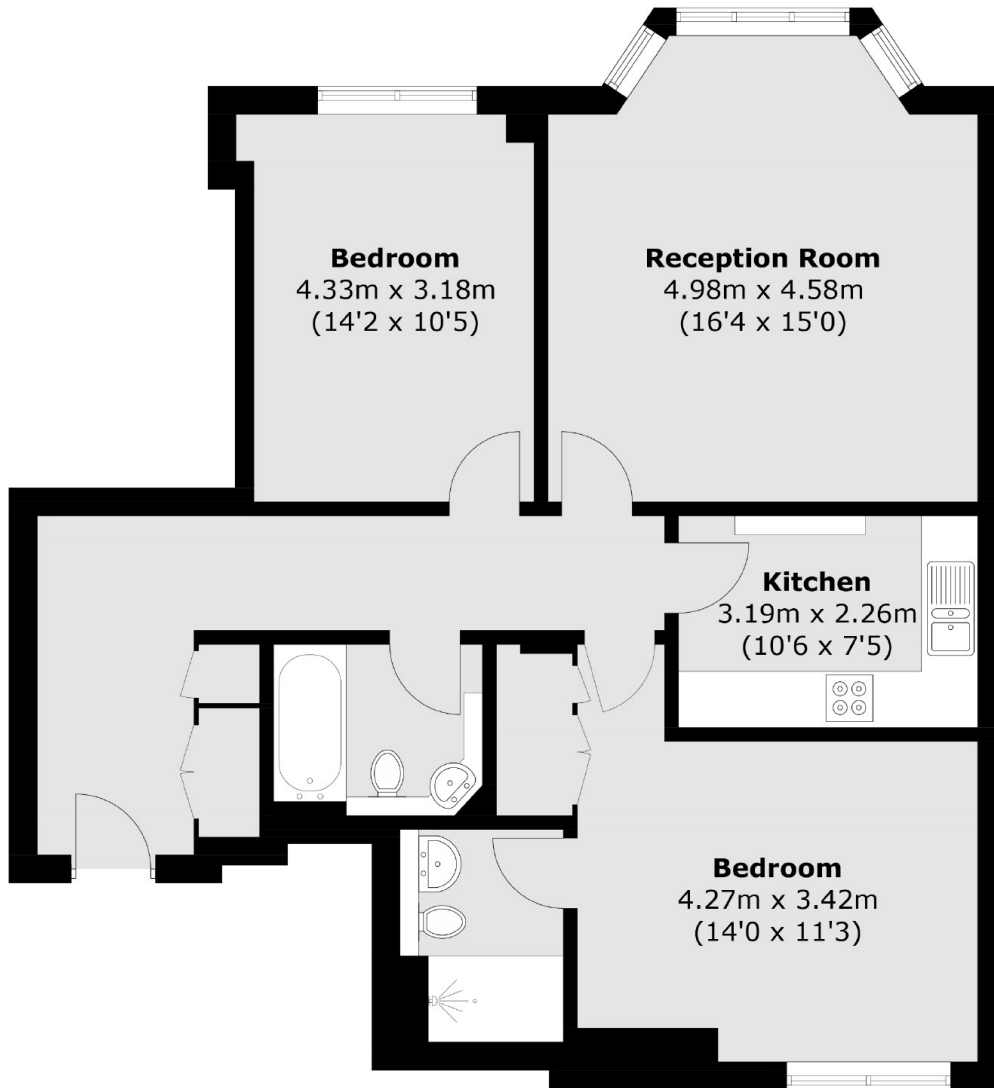
A spacious two bedroom, two bathroom apartment on the first floor of a modern development in Vincent Square with daytime concierge, gym and a secure parking space. The property has a bright reception room, separate modern kitchen, principle bedroom with en suite bathroom, second double bedroom and family bathroom with shower over bath. An ideal home for a couple, small family or two professional sharers.

The Atrium is close to Pimlico Underground and Victoria main line Station offering the Gatwick Express and mainline trains to the south-east, alongside numerous bus routes around London.

Features

- Two Double Bedrooms
- Two Bathrooms
- First Floor Apartment
- Daytime Concierge
- Underground Parking
- Excellent Location

Vincent Square, London, SW1P



First Floor

Total area (approx.): 84.3 sq. m (907.4 sq. ft)