



Carrara Tower, 1 Bollinder Place

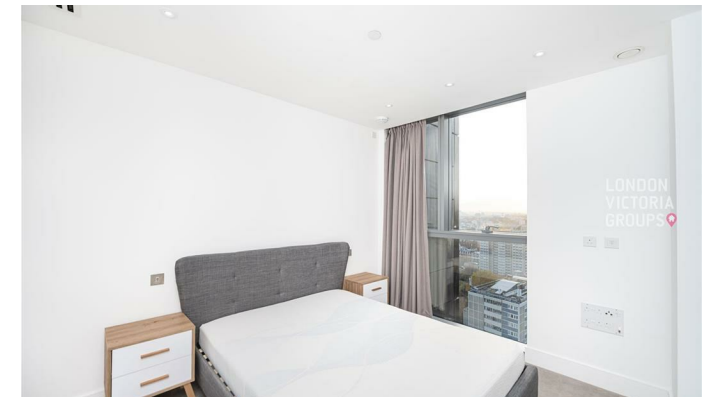
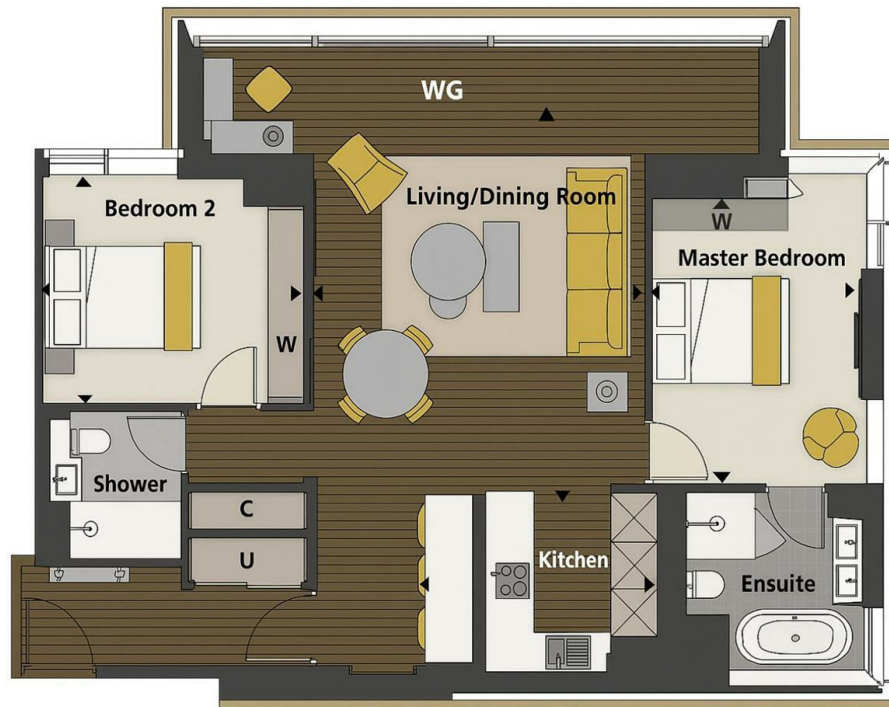
, London EC1V 2AE

- Two-bedroom, two-bathroom apartment
- Floor-to-ceiling windows
- 20-metre swimming pool and spa
- Old Street Station (Northern Line) – approx. 5 mins' walk
- CTB-G
- Contemporary kitchen is fully fitted with premium integrated appliances
- 24-hour concierge service
- Screening room and residents' lounge
- EPC-B

Asking Price £1,320,000 Leasehold



Local Authority **Islington**
Council Tax Band **G**
EPC Rating **B**



London Office Office

Spaces Victoria, 25 Wilton Road, Pimlico,
London, SW1V 1LW

Contact

020 3084 3094
XL@londonvictoriagroups.co.uk
www.londonvictoriagroups.co.uk

Agents Note: Whilst every care has been taken to prepare these particulars, they are for guidance purposes only. All measurements are approximate and for general guidance purposes only and whilst every care has been taken to ensure accuracy, they should not be relied upon and potential buyers/tenants are advised to recheck the measurements.