



Plot 162 Llanmoor Homes Site Tondu, Bridgend

£384,995 Freehold

Integral single garage • Double oven, hob, extractor fan and fridge freezer • Spacious open plan kitchen dining area • French doors leading to rear garden • En suite shower room to master bedroom • 2 Double bedrooms & 2 singles • Energy efficient heating system • NHBC Ten year warranty

DanielMatthew
ESTATE AGENTS



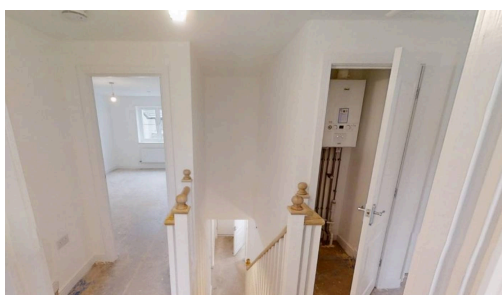
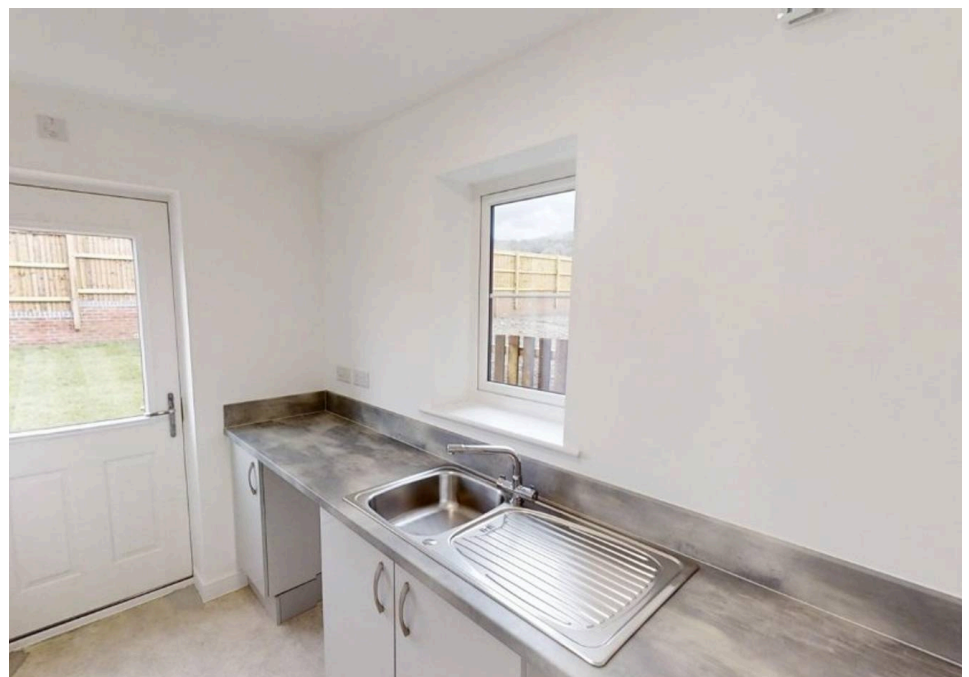
The Maple is a 4 bed detached home with integral garage, front lounge, open plan kitchen diner, French doors to garden, master en suite, 2 doubles, 2 singles, and family bathroom.

Council Tax band: TBD

Tenure: Freehold



- Integral single garage
- Double oven, hob, extractor fan and fridge freezer
- Spacious open plan kitchen dining area
- French doors leading to rear garden
- En suite shower room to master bedroom
- 2 Double bedrooms & 2 singles
- Energy efficient heating system
- NHBC Ten year warranty





Lounge

10' 7" x 14' 3" (3.23m x 4.34m)

Kitchen/Diner

21' 11" x 9' 11" (6.68m x 3.02m)

Utility Room

5' 7" x 9' 11" (1.70m x 3.02m)

Cloakroom

3' 4" x 5' 8" (1.02m x 1.73m)

Bedroom One

9' 8" x 17' 3" (2.95m x 5.26m)

En-Suite

9' 8" x 5' 3" (2.95m x 1.60m)



Bedroom Two

10' 6" x 12' 10" (3.20m x 3.91m)

Bedroom Three

10' 7" x 11' 7" (3.23m x 3.53m)

Bedroom Four

9' 11" x 12' 11" (3.02m x 3.94m)

Bathroom

6' 9" x 6' 4" (2.06m x 1.93m)



