



Guide Price
£250,000

Leasehold

2x  1x  1x 

**Levett Road,
Leatherhead, Surrey,
KT22**

OVER 60?

Secure this property
for up to **59% less!**

cubitt & west
Helping you move forwards



Main features

- Conveniently located for easy access to Leatherhead train station
- Close to town centre and local amenities
- Scope to modernise and improve
- Ample parking available on street
- Communal garden

Accommodation

GROUND FLOOR

Hallway

Lounge/Diner: 19'7 x 11'4 (5.97m x 3.46m)

Kitchen: 12'1 x 7'4 (3.69m x 2.24m)

Bedroom 1: 15'3 x 9'5 (4.65m x 2.87m)

Bedroom 2: 13'4 x 9'4 (4.07m x 2.85m)

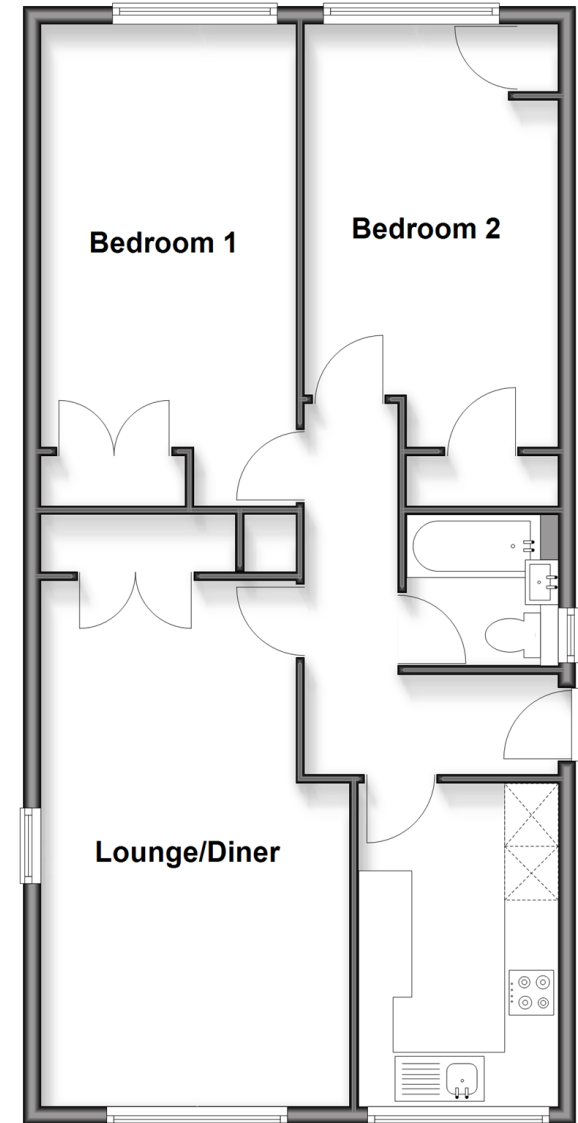
Bathroom

OUTSIDE

Communal Garden

Ground Floor

Approx. 70.1 sq. metres (754.6 sq. feet)



Call Leatherhead - 01372 373780 ■ CubittAndWest.Co.Uk

- Legal advice should be taken to verify fixtures/fittings, planning, alterations and/or lease details
- Appliances & services are untested, dimensions are approximate and floor plans are not to scale
- Through a Homewise Home For Life Plan people aged 60+ can secure this property for up to 50% less, by purchasing a Lifetime Lease.



21108408/20251122/MB1/JL