

OVER 60?

Secure this property
for up to **59% less!**



Price
£425,000
Freehold

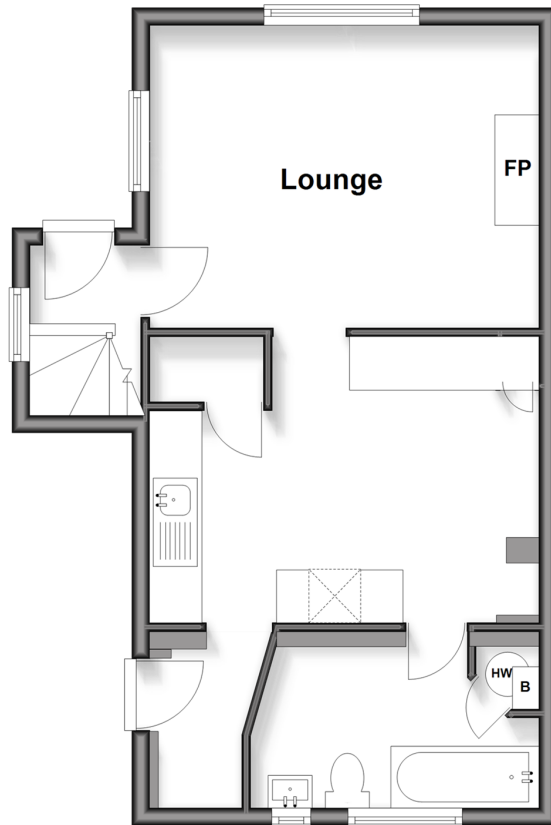
2x  1x  1x 

Woodside Cottages, Bedlow Lane,
Cranleigh, Surrey, GU6

cubitt & west
Helping you move forwards

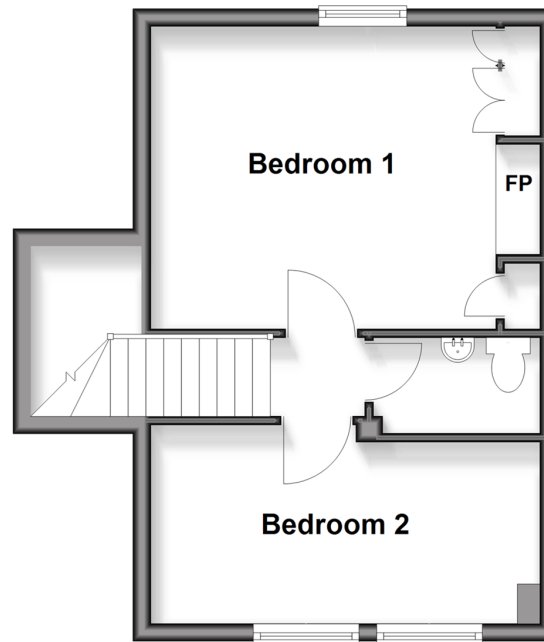
Ground Floor

Approx. 41.8 sq. metres (449.5 sq. feet)



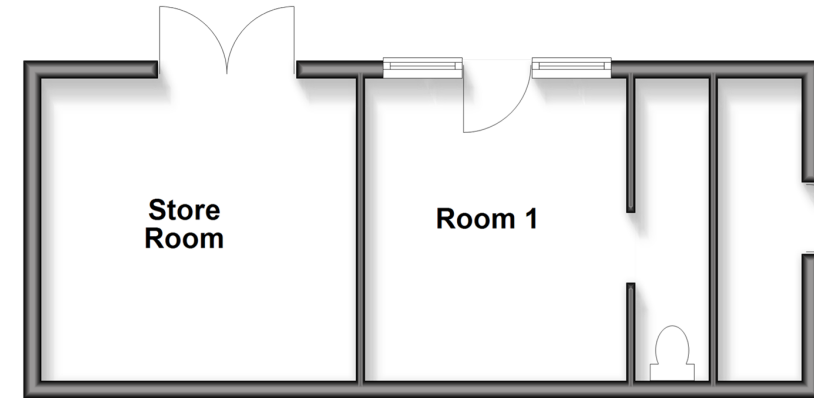
First Floor

Approx. 32.9 sq. metres (354.1 sq. feet)



Outbuilding

Approx. 29.9 sq. metres (321.7 sq. feet)



Accommodation

GROUND FLOOR

Entrance Hallway

Lounge: 13'8 x 11'2 (4.17m x 3.41m)

Kitchen: 14'6 x 10'6 (4.42m x 3.20m)

Bathroom

FIRST FLOOR

Landing

Bedroom 1: 13'3 x 11'5 (4.04m x 3.48m)

Bedroom 2: 14'6 x 6'7 (4.42m x 2.01m)

OUTBUILDING

Store Room

Room 1

OUTSIDE

Front Garden

Rear Garden

Driveway



Main features

- A characterful two bedroom semi detached house
- Parking and outbuildings
- Offered with no onward chain
- Set within a quiet lane but within easy reach of Cranleigh High Street and local schools

Nearest Schools

Primary Schools: Park Mead 0.8 miles, St Cuthbert Mayne 0.8 miles, Cranleigh C of E Primary 0.9 miles

Secondary Schools: Glebelands School 09 miles, Cranleigh School (private) 1.2 miles

Transport Information

Train Stations: Gomshall 7.1 miles, Shalford 7.3 miles, Ockley 7.4 miles, Guildford 9.1 miles

Address

Woodside Cottages, Bedlow Lane, Cranleigh, Surrey, GU6

Directions

For directions to this property please contact us.



cubitt&west
Helping you move forwards

Call Cranleigh Branch 01483 271567 ■ cubittandwest.co.uk



■ If buying to rent, please check if Local Authority licensing schemes apply before proceeding

■ Through a Homewise Home For Life Plan people aged 60+ can secure this property for up to 59% less, by purchasing a Lifetime Lease



EPC RATING



CURRENT: D(63) POTENTIAL: B(85)

20307112/20260530/NF1/KAB