



17, Richmond Close, Ware

SG12 0EN

Asking Price £550,000



[stevenoates.com](http://stevenoates.com)



## 17 Richmond Close, Ware, Herts, SG12 0EN

Nestled at the end of a tranquil cul-de-sac on Richmond Close in Ware, this spacious three-bedroom semi-detached family home offers a perfect blend of comfort and modern living. The ground floor has been thoughtfully extended boasting an impressive open-plan kitchen/dining room, creating an inviting space ideal for entertaining guests or enjoying family meals. The living room has been enhanced providing ample room for relaxation and social gatherings. The home features three generously sized bedrooms, ensuring plenty of space for family members or guests. Additionally, there is a convenient downstairs toilet and a well-appointed family bathroom, catering to the needs of a busy household.

Outside, the property is complemented by a large private rear garden, perfect for children to play or for hosting summer barbecues. The driveway provides parking for two vehicles comfortably along with a garage for additional storage or vehicle accommodation. This delightful home is not only well-situated in a peaceful neighbourhood but also offers the modern conveniences and space that families desire. It presents an excellent opportunity for those seeking a comfortable and stylish living environment in Ware.

Richmond Close is only a short distance away from the charming town high street, offering an exceptional living experience. Living near Ware's bustling High Street provides residents with a wealth of benefits. Here, you'll find a delightful mix of independent shops, boutiques, and local businesses, offering a unique shopping experience. From quaint cafes and cosy pubs to restaurants serving a variety of cuisines, the High Street is a haven for food enthusiasts. The vibrant market, held regularly, showcases local produce and artisanal goods. Additionally, the High Street hosts community events, festivals, and cultural celebrations throughout the year, fostering a strong sense of community spirit.



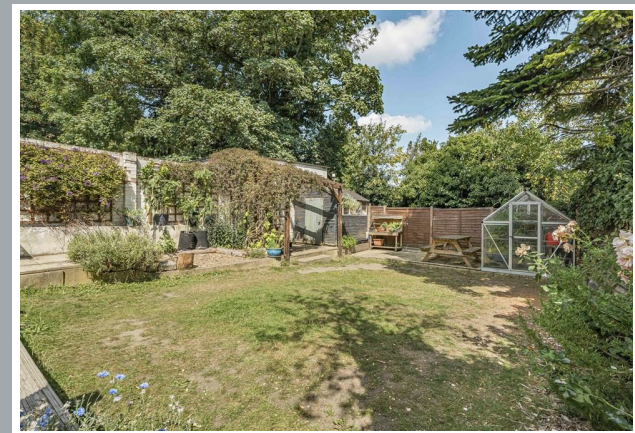
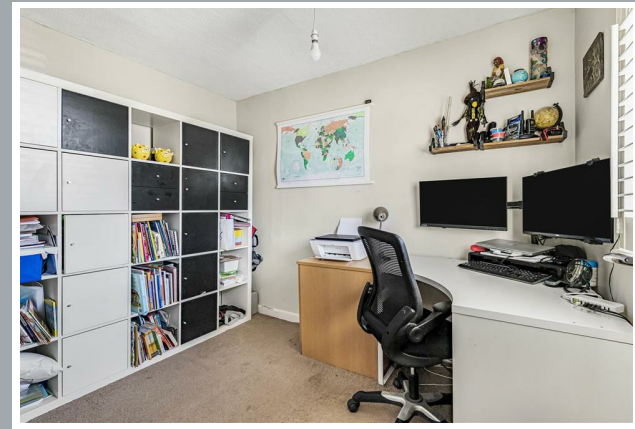
70 Fore Street, Hertford, Hertfordshire, SG14 1BY



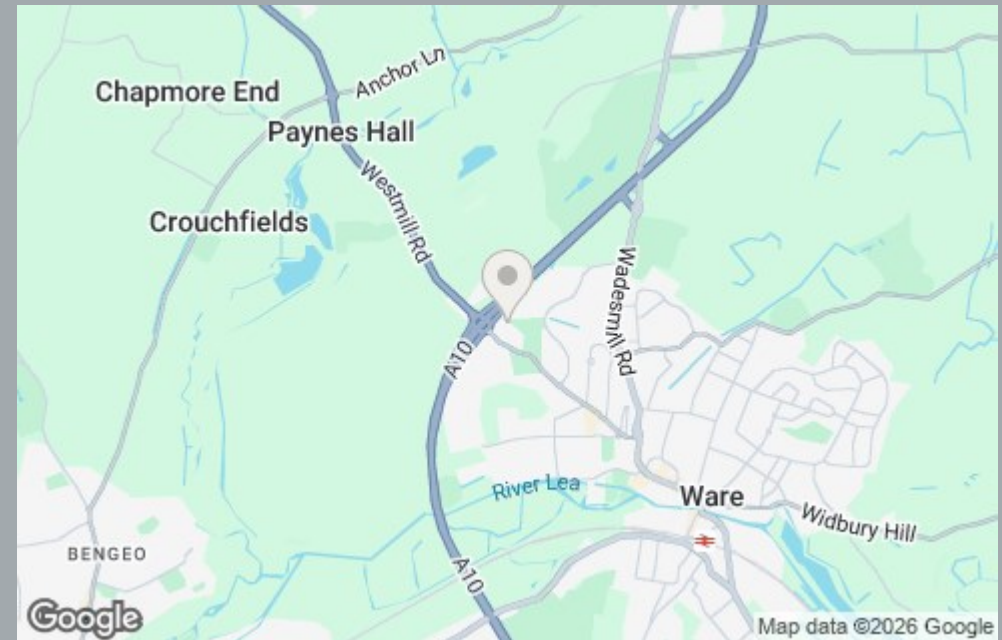
70 Fore Street, Hertford, Hertfordshire, SG14 1BY



70 Fore Street, Hertford, Hertfordshire, SG14 1BY



70 Fore Street, Hertford, Hertfordshire, SG14 1BY



70 Fore Street, Hertford, Hertfordshire, SG14 1BY

**Approximate Gross Internal Area 1203 sq ft - 112 sq m**

Ground Floor Area 770 sq ft – 72 sq m

First Floor Area 433 sq ft – 40 sq m



Floor plan produced in accordance with RICS Property Measurement 2nd Edition. Although Pink Plan Ltd ensures the highest level of accuracy, measurements of doors, windows and rooms are approximate and no responsibility is taken for error, omission or misstatement. These plans are for representation purposes only and no guarantee is given on the total square footage of the property within this plan. The figure icon is for initial guidance only and should not be relied on as a basis of valuation.



These particulars, whilst believed to be accurate are set out as a general outline only for guidance and do not constitute any part of an offer or contract. Intending purchasers should not rely on them as statements of representation of fact, but must satisfy themselves by inspection or otherwise as to their accuracy. No person in this firm's employment has the authority to make or give any representation or warranty in respect of the property.



[stevenoates.com](http://stevenoates.com)