



Clements estate agents



St. Agnells Court, Hemel Hempstead, HP2 7AT **£170,000**

Located in this sought after development in Grovehill is this purpose built first floor flat. Boasting one bedroom, 14'5 living room with balcony, fitted kitchen, gas central heating, double glazing, communal gardens and residents parking.

Situated within easy reach of the local shops, schools and transport facilities, Hemel Hempstead town centre and the M1, M25 and A41 road links.

Entrance Hall

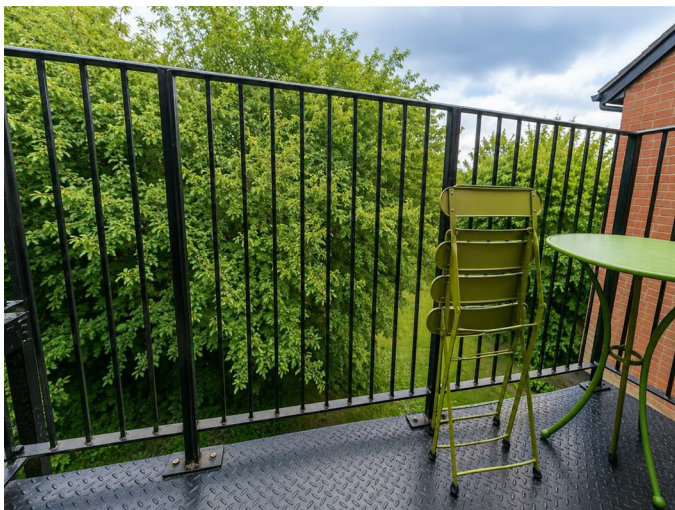
Living Room 14'5 x 9'9 (4.39m x 2.97m)



Bathroom



Balcony

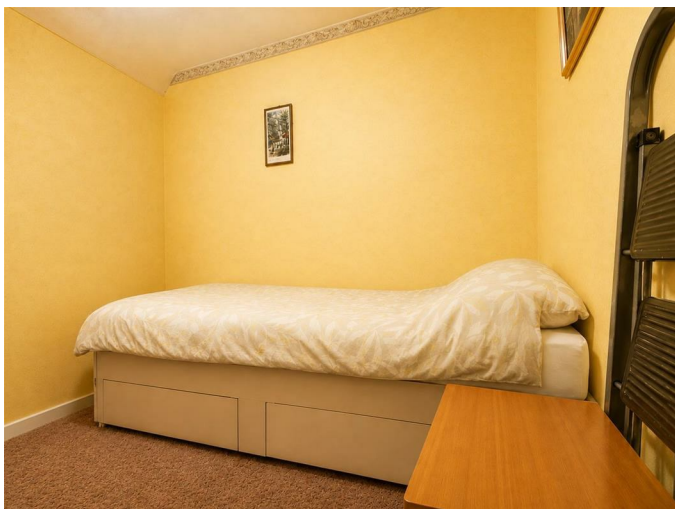


Residents Parking

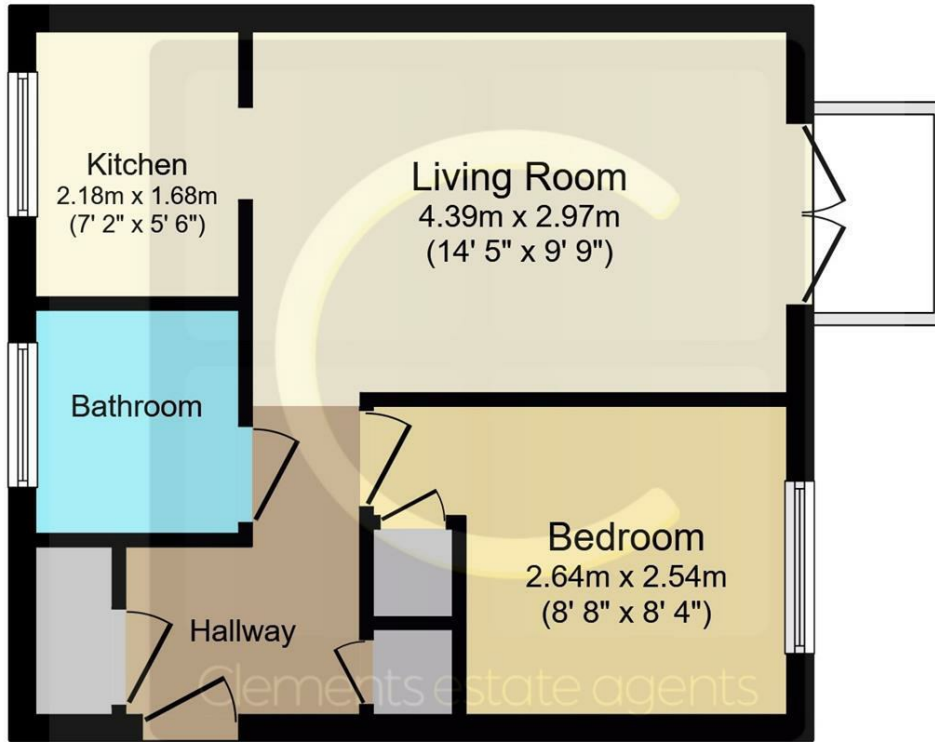
Communal Gardens



Bedroom 8'8 x 8'4 (2.64m x 2.54m)



Floor Plan



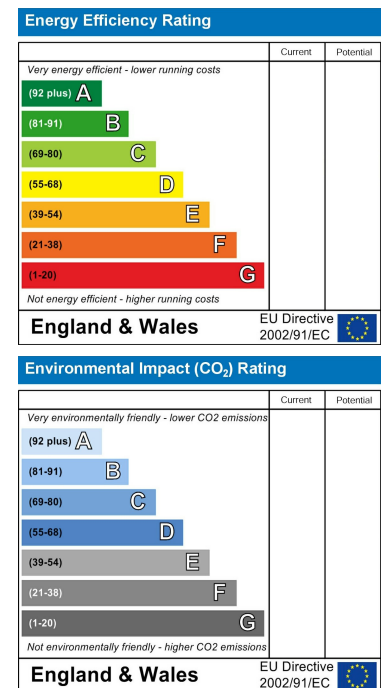
Floor Plan

This floor plan is for illustrative purposes only. It is not drawn to scale. Any measurements, floor areas (including any total floor area), openings and orientations are approximate. No details are guaranteed, they cannot be relied upon for any purpose and do not form any part of any agreement. No liability is taken for any error, omission or misstatement. A party must rely upon its own inspection(s). Powered by www.Propertybox.io

Area Map



Energy Efficiency Graph



These particulars, whilst believed to be accurate are set out as a general outline only for guidance and do not constitute any part of an offer or contract. Intending purchasers should not rely on them as statements of representation of fact, but must satisfy themselves by inspection or otherwise as to their accuracy. No person in this firm's employment has the authority to make or give any representation or warranty in respect of the property.