

Holly Park Drive, Birmingham, B24 9LQ

£130,000

 2  1  1



This spacious, two-bedroom top-floor flat, complete with a garage, offers an excellent opportunity in a popular Erdington location.

Accessed via a communal entrance, the flat opens into a welcoming hallway. The property features a generous lounge/diner, providing ample space for relaxation and entertaining. The kitchen is fully fitted. Nearby there are sports facilities a parks, ideal for families. There are two comfortable double bedrooms, a well-appointed bathroom, and convenient internal storage.

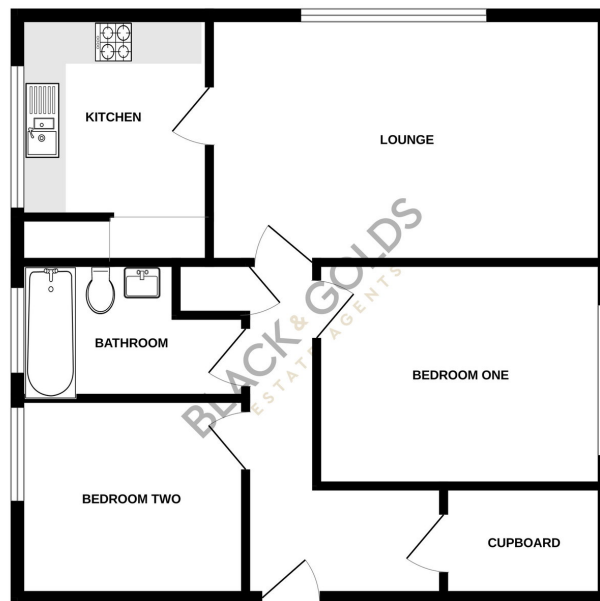
A key benefit of this property is the included garage en bloc, offering secure parking or additional storage. The location provides easy access to schools, local shops, and Erdington town centre.

For commuters, the property boasts excellent transport links to Birmingham city centre, Sutton Coldfield, Lichfield, and the M6 motorway, making it a highly desirable area.

Early viewing recommended. EPC: F, council tax B. Tenure: Leasehold.

- Popular location
- Lounge/diner
- Two double bedrooms
- Separate garage en bloc
- Good schools
- Top floor flat
- Kitchen
- Storage room
- Excellent transport links
- No upward chain

GROUND FLOOR



Whilst every attempt has been made to ensure the accuracy of the floorplan contained here, measurements of doors, windows, rooms and any other items are approximate and no responsibility is taken for any omission or mis-statement. This plan is for illustrative purposes only and should be used as such for any prospective purchaser. The services, systems and appliances shown have not been tested and no guarantee as to their operability or efficiency can be given.
Made with Homestyler ©2023