



**85 RHODRONS AVENUE
CHESSINGTON
SURREY
KT9 1AY
£585,000**

EXTENDED SEMI DETACHED HOUSE

THREE BEDROOMS

24'10 X 11'10 LOUNGE DINING ROOM

17'10 X 9'10 FAMILY ROOM

11'6 X 7'3 KITCHEN

DOUBLE GLAZED WINDOWS

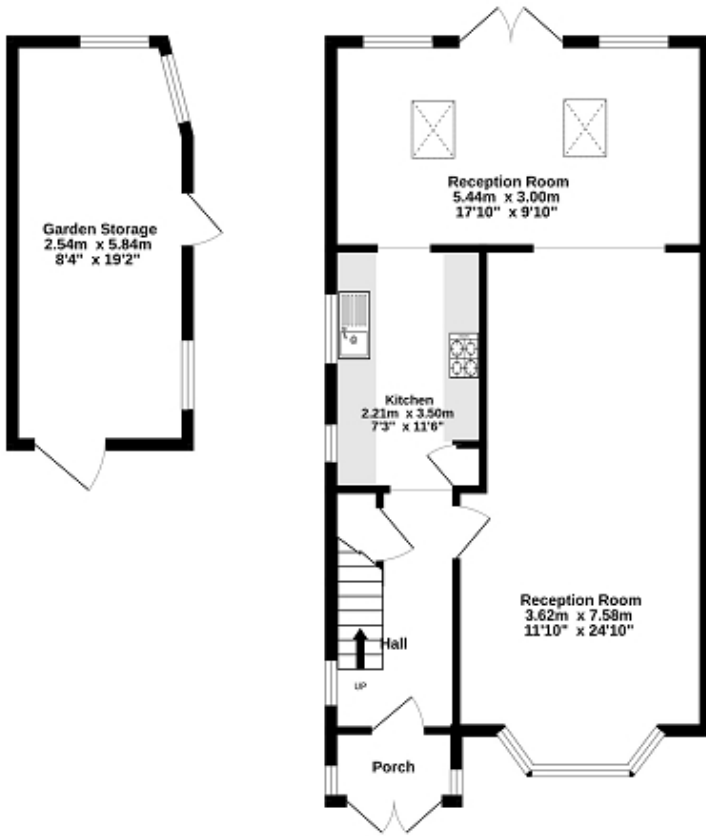
GAS CENTRAL HEATING

63' REAR GARDEN

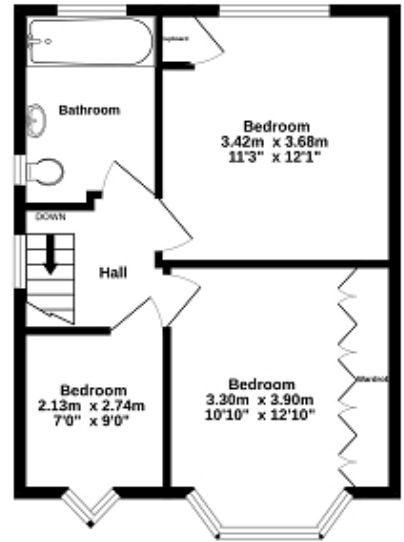
OFF STREET PARKING

VIEWINGS HIGHLY RECOMMENDED

Ground Floor
74.0 sq.m. (797 sq.ft.) approx.



1st Floor
41.3 sq.m. (445 sq.ft.) approx.



TOTAL FLOOR AREA : 115.3 sq.m. (1241 sq.ft.) approx.

While every attempt has been made to ensure the accuracy of the floorplan contained here, measurements of doors, windows, rooms and any other items are approximate and no responsibility is taken for any error, omission or mis-statement. This plan is for illustrative purposes only and should be used as such by any prospective purchaser. The services, systems and appliances shown have not been tested and no guarantee as to their operability or efficiency can be given.
Made with Metapix ©2005

