



5 Deweys Lane, Ludgershall, Andover, SP11 9QU  
Asking Price £260,000





## 5 Deweys Lane, Ludgershall Andover, Asking Price £260,000

### PROPERTY DESCRIPTION BY Miss Molly Scruton

This charming character cottage enjoys an attractive blend of traditional brick and flint elevations and is positioned along a quiet village lane, offering both charm and practicality.

The accommodation is thoughtfully arranged, beginning with an inviting sitting room featuring a cosy focal fireplace and a warm, welcoming atmosphere—ideal for relaxing evenings. The ground floor continues through to a separate dining room, providing a comfortable space for everyday meals or entertaining, which in turn flows naturally into the kitchen. The kitchen is well laid out with ample storage and worktop space, complemented by a separate utility area that keeps day-to-day appliances neatly tucked away. A ground floor bathroom adds further convenience.

Upstairs, the property offers two well-proportioned bedrooms, both enjoying pleasant outlooks and flexible use for a main bedroom, guest room or home office.

To the rear, the cottage benefits from a private and enclosed garden, predominantly laid to lawn with established planting and space to enjoy outdoor dining or gardening. A detached shed provides useful storage or workshop potential.

Overall, this is a delightful period home that combines character features with practical living, ideal for those seeking a charming village property with outdoor space and well-balanced accommodation.







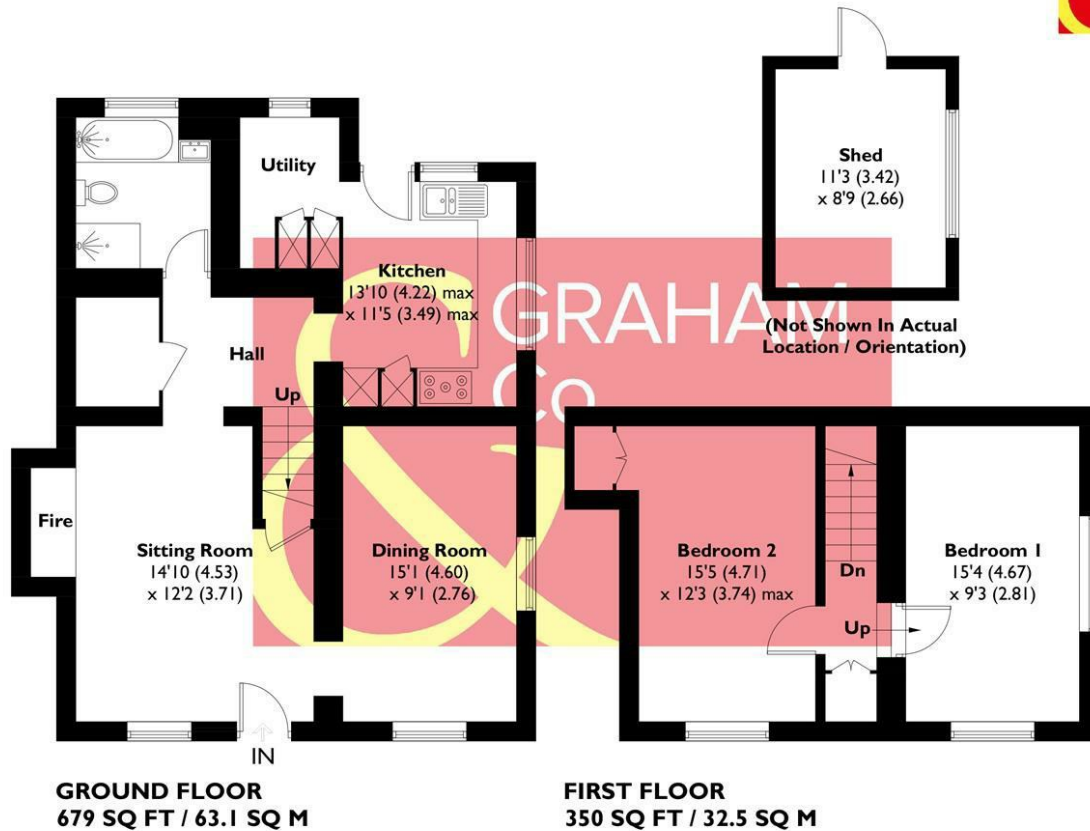
Ludgershall offers supermarkets, restaurants, café, surgery, and award-winning butchers, with the Wellington Academy offering nursey, primary and secondary schooling. As far as communications are concerned, the village is well placed for the A303 and M3, and the nearby Andover and Grateley train stations provide services to London Waterloo, with Pewsey station providing access to London Paddington. Andover is approximately 8 miles, Pewsey is approximately 10 miles, Marlborough is approximately 14 miles and Salisbury is approximately 18 miles.







**APPROXIMATE GROSS INTERNAL AREA = 1029 SQ FT / 95.6 SQ M**  
**SHED = 97 SQ FT / 9.0 SQ M**  
**TOTAL = 1126 SQ FT / 104.6 SQ M**



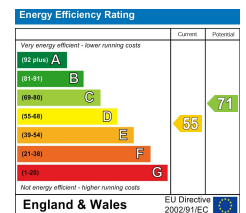
This plan is for layout guidance only. Not drawn to scale unless stated. Windows and door openings are approximate. Whilst every care is taken in the preparation of this plan, please check all dimensions, shapes and compass bearings before making any decisions reliant upon them. Created by Emzo Marketing (ID 1272734)  
**Produced for Graham & Co**

## MORTGAGE ADVICE Across The Market Mortgages

An independent Mortgage brokerage offering expert advice from across the whole market. Whether you are a first-time buyer, home mover, remortgaging or buying a Buy-To-Let investment. Tristan can provide expert & reliable advice, in a clear jargon free language. Book a free consultation today.

E - [tristan@atmmortgages.com](mailto:tristan@atmmortgages.com) M - 07545320380

[www.atmmortgages.com](http://www.atmmortgages.com)



**Tax Band: C**



**OPEN 7 DAYS**

If you are considering selling your home  
please contact us today for your free  
no obligation valuation

**01264 356500**

IMPORTANT: we would like to inform prospective purchasers that these sales particulars have been prepared as a general guide only. A detailed survey has not been carried out, nor the services, appliances and fittings tested. Room sizes should not be relied upon for furnishing purposes and are approximate. If floor plans are included, they are for guidance only and illustration purposes only and may not be to scale. If there are any important matters likely to affect your decision to buy, please contact us before viewing the property.

