



**Common Road, Runcton Holme, King's Lynn, PE33 0AA**

**welcome to**

**Common Road, Runcton Holme, King's Lynn**

Positioned on no-through road, this expansive detached bungalow combines enviable space & versatility. The property presents an outstanding opportunity to personalise, featuring four flexible reception rooms, large bedrooms & two bathrooms, plus private rear garden & garage.



### **Accommodation:**

Double-glazed entrance door to:

### **Entrance Hall**

Door to the side. Double-glazed window to the side. Radiator.

### **Lounge/Diner**

29' 9" max x 21' 8" max ( 9.07m max x 6.60m max )  
L-shaped room. Double-glazed windows to the side & rear. Fireplace. Four radiators. Double-glazed sliding patio doors to the rear leading to the rear garden.

### **Kitchen**

11' 5" x 10' 5" ( 3.48m x 3.17m )  
This fitted kitchen includes both wall & base units with work surfaces over, a one and a half bowl sink & drainer unit, space for a freestanding cooker & a breakfast bar. Radiator. Double-glazed window to the side. Double-glazed door leading to the utility room.

### **Utility Room**

10' 1" x 5' 5" ( 3.07m x 1.65m )  
Fitted with wall & base units. Space & plumbing for a washing machine & tumble dryer. Boiler cupboard. Double-glazed door to the side.

### **Bedroom One**

17' 8" x 11' 5" ( 5.38m x 3.48m )  
Double-glazed bay windows to the front & side. Radiator.

### **Bedroom Two**

16' 3" x 9' 9" ( 4.95m x 2.97m )  
Double-glazed bay window to the front. Radiator.

### **Shower Room**

Fitted with WC, wash hand basin with vanity unit & shower cubicle. Heated towel rail. Built-in storage. Double-glazed window to the side.

### **Store Room**

10' 7" x 7' ( 3.23m x 2.13m )  
Two double-glazed windows to the side.

### **Store Room**

8' 3" x 6' 6" ( 2.51m x 1.98m )  
With fitted shelving.

### **Bar**

13' 9" x 7' 4" ( 4.19m x 2.24m )  
Radiator. Double-glazed sliding patio doors to:

### **Study**

16' 4" x 16' ( 4.98m x 4.88m )  
Fitted with wall & base units. Radiator. Double-glazed sliding patio doors to the side leading to the garden.

### **Office**

14' 4" x 16' ( 4.37m x 4.88m )  
Radiator. Double-glazed sliding patio doors to the side.

### **Bedroom Three**

15' 8" x 14' 2" ( 4.78m x 4.32m )  
Double-glazed window to the side. Radiator.  
Currently used as a gym space.

### **En Suite**

Fitted with WC, wash hand basin & shower cubicle. Radiator. Double-glazed windows to the side & rear.

### **Outside**

To the front of the property, a generous brickweave driveway provides off-road parking for 3 cars & leads to the garage. The front garden is laid to lawn with various plants & shrubs and is enclosed by a low brick wall. The rear garden is enclosed by timber fencing & conifer hedging to allow for plenty of privacy, and is mainly laid to lawn, alongside a patio area and various plants & shrubs.

### **Agent's Note**

Heating to the property is served by electric heating. Please contact the branch for more information if required.

Please note, the flooring in the study & office sits above an enclosed, inactive indoor swimming pool. This is covered by the flooring and is not currently used. Please contact the branch for further information if required.



**view this property online** [williamhbrown.co.uk/Property/DHM112195](http://williamhbrown.co.uk/Property/DHM112195)





Total floor area 217.9 m<sup>2</sup> (2,345 sq.ft.) approx

This floor plan is for illustrative purposes only. It is not drawn to scale. Any measurements, floor areas (including any total floor area), openings and orientation are approximate. No details are guaranteed, they cannot be relied upon for any purpose and they do not form part of any agreement. No liability is taken for any error, omission or misstatement. A party must rely upon its own inspection(s). Powered by [www.propertybox.io](http://www.propertybox.io)

welcome to

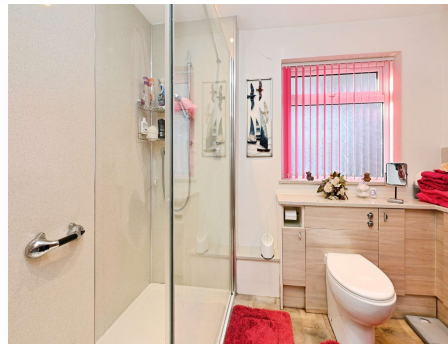
## Common Road, Runcton Holme, King's Lynn

- Detached bungalow
- 3 bedrooms (potential for 5)
- Multiple reception rooms
- Flexible, extended layout
- Secluded location

Tenure: Freehold EPC Rating: E

Council Tax Band: D

# £340,000



Please note the marker reflects the postcode not the actual property

**view this property online** [williamhbrown.co.uk/Property/DHM112195](http://williamhbrown.co.uk/Property/DHM112195)



Property Ref:  
DHM112195 - 0003

1. MONEY LAUNDERING REGULATIONS Intending purchasers will be asked to produce identification documentation at a later stage and we would ask for your co-operation in order that there is no delay in agreeing the sale. 2. These particulars do not constitute part or all of an offer or contract. 3. The measurements indicated are supplied for guidance only and as such must be considered incorrect. Potential buyers are advised to recheck measurements before committing to any expense. 4. We have not tested any apparatus, equipment, fixtures or services and it is in the buyers interest to check the working condition of any appliances. 5. Where an EPC, or a Home Report (Scotland only) is held for this property, it is available for inspection at the branch by appointment. If you require a printed version of a Home Report, you will need to pay a reasonable production charge reflecting printing and other costs. 6. We are not able to offer an opinion either written or verbal on the content of these reports and this must be obtained from your legal representative. 7. Whilst we take care in preparing these reports, a buyer should ensure that his/her legal representative confirms as soon as possible all matters relating to title including the extent and boundaries of the property and other important matters before exchange of contracts.

William H Brown is a trading name of Sequence (UK) Limited which is registered in England and Wales under company number 4268443. Registered Office is Cumbria House, 16-20 Hockliffe Street, Leighton Buzzard, Bedfordshire, LU7 1GN. VAT Registration Number is 500 2481 05.



william h brown



**01366 387638**



DownhamMarket@williamhbrown.co.uk



2 Market Place, DOWNHAM MARKET, Norfolk,  
PE38 9DE



**williamhbrown.co.uk**