



SPACIOUS 3RD FLOOR, 2 BEDROOM 2 BATH APARTMENT

23 Crescent Court, Foxboro Road, Redhill, RH1 1TD

A spacious and well-presented two double bedroom, two bathroom apartment set on the third floor of this popular development (no lift), enjoying far-reaching views across Redhill. Ideally located just minutes from the town centre and mainline train station, the property offers bright and airy open-plan living with a fully fitted kitchen. Both bedrooms are generous doubles, with the principal bedroom benefiting from an en-suite shower room. Further benefits include an allocated parking space, long 131-year lease, and heating and hot water included within the service charge. Council Tax Band D, EPC rating C. Chain free. Service charge £6,438 per annum (includes heating and hot water) . Ground £250 per annum.

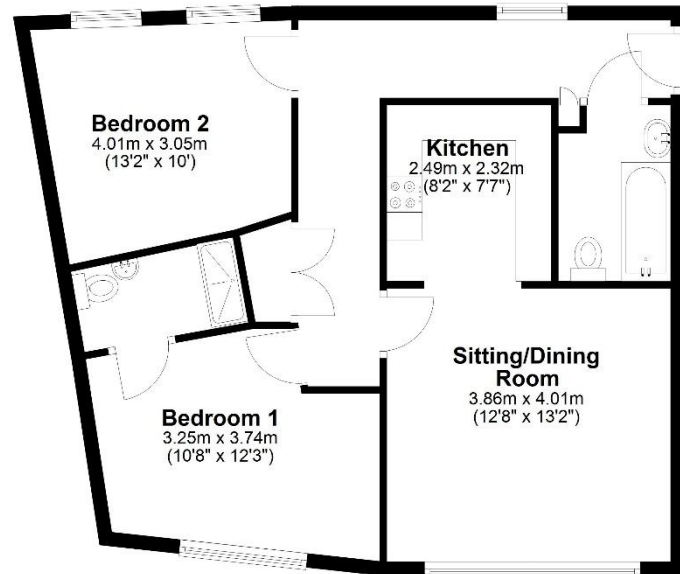


lewis
white



Third Floor

Approx. 63.9 sq. metres (687.4 sq. feet)



Total area: approx. 63.9 sq. metres (687.4 sq. feet)



Epc: C. Council tax: D. Lease: 131 years.