



Bedroom
15'5" x 12'10"

Bedroom
15'5" x 9'7"

Bathroom
6'4" x 5'10"

Shower Room
3'8" x 3'2"

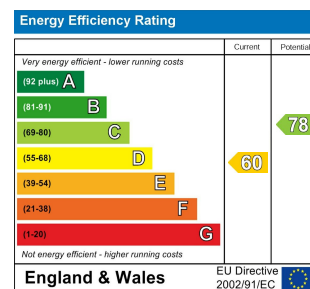
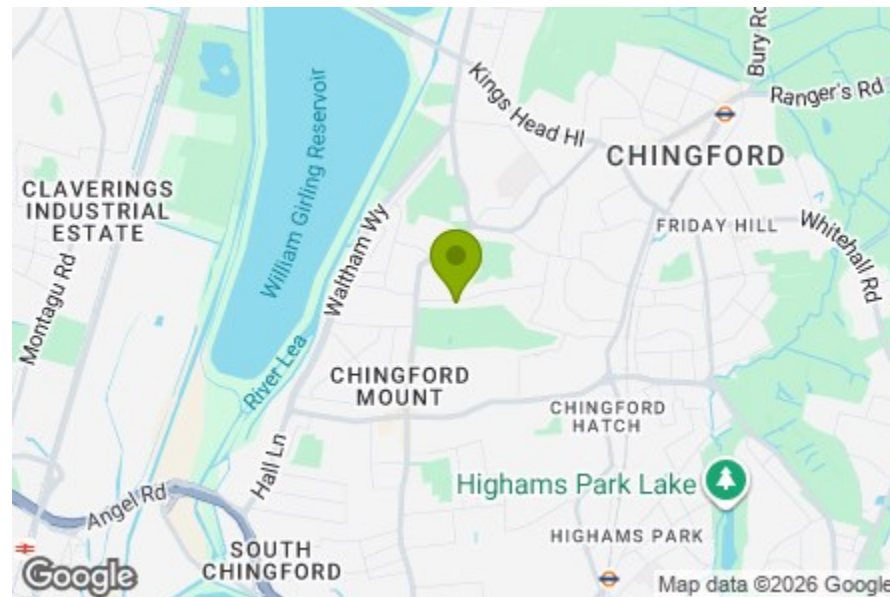
Reception Room
19'5" x 13'6"

Kitchen/ Diner
19'7" x 12'8"

Orangery
17'7" x 9'2"

Garage
14'7" x 9'2"

Garden
70'6"



CHINGFORD AVENUE, CHINGFORD

Offers In The Region Of £650,000 Freehold
2 Bed Bungalow



Features:

- Two Bedroom Bungalow
- Detached
- Approx. 958 Square Foot
- Chain Free
- Potential To Extend (STPP)
- Easy Access to Walthamstow and Chingford
- Private Garage and Driveway
- Circa 70 Foot Rear Garden
- Detached Conservatory
- Wider Than Your Average Plot

This chain free two bedroom detached bungalow sits in a popular part of Chingford, offering comfortable single storey living with plenty of future potential. The wider than average plot, detached conservatory, private driveway and garage all add to its appeal, while the long rear garden and potential to extend, subject to the usual permissions, give the next owner room to shape the home over time. Chingford Mount, Highams Park, Epping Forest and Walthamstow are all within easy reach.

E11, E7, E12 & E15
hello11@stowbrothers.com
0203 397 2222

E4 & N17
hello4@stowbrothers.com
0203 369 6444

E17 & E10
hello17@stowbrothers.com
0203 397 9797

E18 & IG8
hello18@stowbrothers.com
0203 369 1818

E8, E9, E5, N16, E3 & E2
hellohackney@stowbrothers.com
0208 520 3077

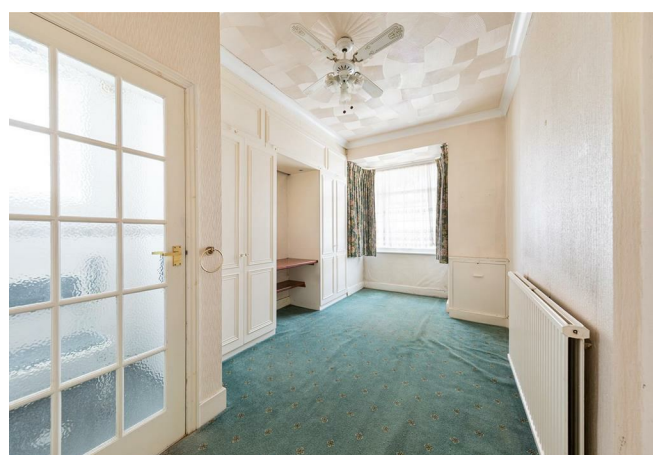
New Homes
newhomes@stowbrothers.com
0203 325 7227

Investment & Development
id@stowbrothers.com
0208 520 6220

Property Maintenance
propertymanagement@stowbrothers.com
0203 325 7228

STOWBROTHERS.COM
@STOWBROTHERS

REQUEST A VIEWING
0203 369 6444



IF YOU LIVED HERE...

Step inside and the layout immediately feels easy to live with, with a central hallway drawing everything together. Two well proportioned double bedrooms sit at the front of the home, each with a wide bay window that brings in plenty of daylight and gives the rooms a bright, open feel. The bathroom is positioned between the sleeping and living areas, with both a bath and separate shower.

The reception room brings a lovely sense of openness, with double aspect windows, high ceilings and plenty of room for quiet evenings, family gatherings or long lunches with friends. To the rear, the kitchen and dining room enjoys plenty of natural light, with cream cabinetry, generous worktop space and doors opening onto the garden.

Outside, the garden is a real highlight. Stretching away from the house with lawn, mature planting and leafy borders, it feels wonderfully tucked away. Beside the bungalow, the detached

conservatory offers a peaceful extra room for working, creating or switching off, while the garage, driveway and broader plot bring welcome practicality and future promise.

WHAT ELSE?

- Chingford Mount is close by for everyday shopping, cafés, restaurants and local conveniences, with both Chingford and Walthamstow easily accessible.

- Epping Forest, Highams Park Lake and Ridgeway Park are all nearby, offering open green space, walking routes and places to slow down at the weekend.

- Chingford Station provides direct Overground services to Liverpool Street, while nearby bus routes offer straightforward connections across Waltham Forest and beyond.



A WORD FROM THE EXPERT.....

One of the things I love most about Chingford is the balance it offers. You've got Epping Forest right on the doorstep, so walks, cycling and fresh air are never far away, while central London is still within easy reach.

Weekends might mean a walk through the forest with the dog, finishing at The Butler's Retreat, while The Royal Forest is always a favourite for food and drinks with friends. Gina Restaurant is another local highlight. Owned by chef Ravneet Gill and her husband Mattie Taiano, it earned a Michelin Bib Gourmand in 2026 for its thoughtful food and great value.

What really makes the area special though is the community feel. People are friendly, there's plenty of choice between Chingford Mount and North Chingford, and it offers a brilliant mix of green space, local gems and affordability compared with many parts of London.

LACHLAN HALL
E4 ASSISTANT BRANCH MANAGER

REQUEST A VIEWING
0203 369 6444

FOLLOW US ➔ @STOWBROTHERS
STOWBROTHERS.COM