



## 3 Skipton Close, East Ardsley

Offers Over £200,000

# 3 Skipton Close

East Ardsley, Wakefield

Park up, unpack, and relax! This stunning, turn-key 3-bed modern terrace in East Ardsley features a private garden and two off-street parking spaces, making it the ultimate dream buy for first-time buyers and investors alike.

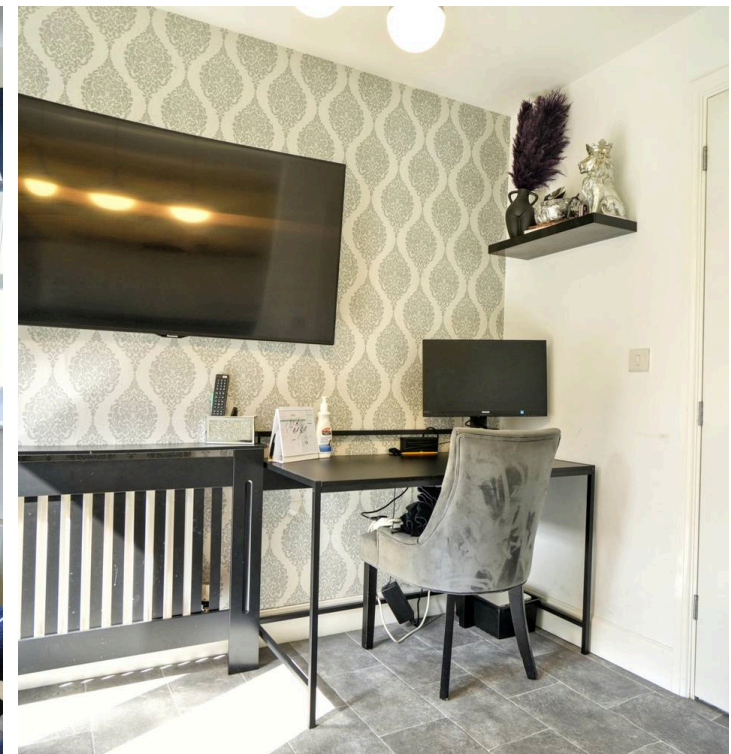
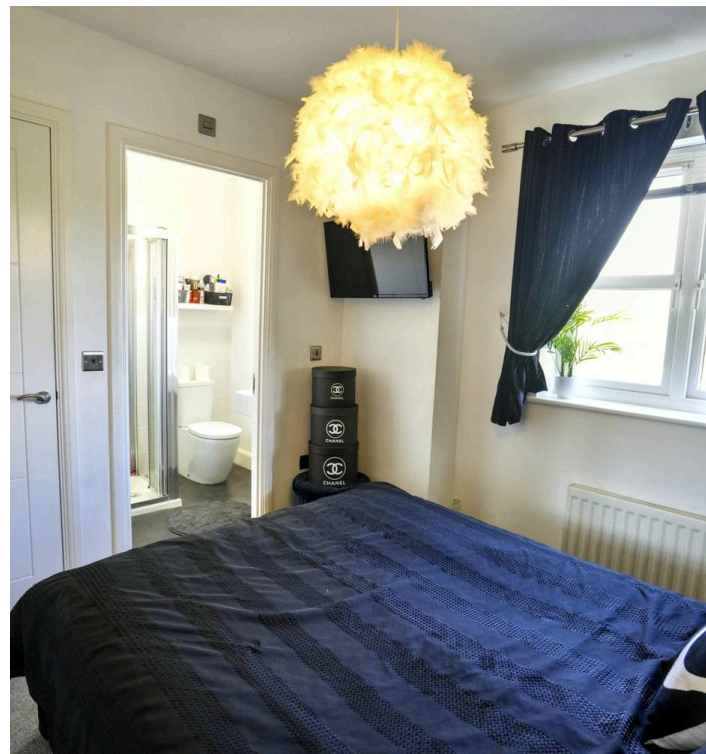
Council Tax band: C

Tenure: Leasehold

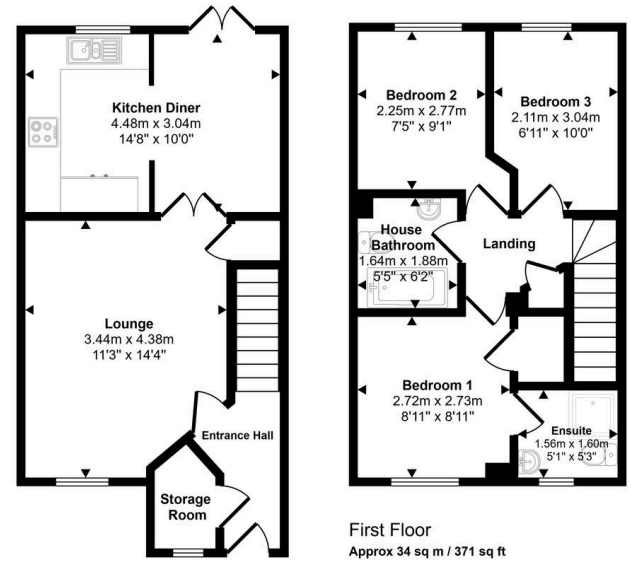
EPC Energy Efficiency Rating: B

EPC Environmental Impact Rating: B

- First Time Buyer Heaven!
- Off Street Parking X2
- Immaculately Presented Throughout
- Kitchen/ Dining Room (Great for Entertaining)
- Priced to Sell!
- Call Today To View



Approx Gross Internal Area  
70 sq m / 758 sq ft



Whilst every attempt has been made to ensure the accuracy of the floor plan contained here, measurements of doors, windows, rooms and any other items are approximate and no responsibility is taken for any error, omission, or mis-statement. The measurements should not be relied upon for valuation, transaction and/or funding purposes. This plan is for illustrative purposes only and should be used as such by any prospective purchaser or tenant.





## Aspire Estates

Aspire Properties, Wira Business Park Ring Road - LS16 6EB

0113 8875079

[estatesales@aspirepropertygroup.co.uk](mailto:estatesales@aspirepropertygroup.co.uk)

[www.aspirepropertygroup.co.uk/](http://www.aspirepropertygroup.co.uk/)