



Brock Street, London NW1

£2,850,000 Leasehold







Description

Set on the 20th floor and extending to a very well-proportioned 1564 sq ft of living space, this elegant apartment offers a wonderful lateral space in a striking modern development with concierge and secure underground car parking.

The welcoming entrance hallway features practical storage rooms for coats and belongings as the apartment opens to reveal its impressive scale. To the left, the spacious open-plan reception room with dining area is enhanced by floor-to-ceiling glass panels that flood the interior with natural light and allow access to one of the private terraces with impressive city views from this elevated position. To the right, the generously proportioned main bedroom is complemented by an en-suite bathroom and direct access to the second private terrace. The second double bedroom also benefits from its own en-suite facilities while the third double bedroom and a versatile smaller bedroom are served by a communal bathroom. Residents enjoy round-the-clock concierge service, a generous communal lounge area, and landscaped gardens.

Ideally positioned in prime West End location, within half a mile from The Regent's Park. Transport links are also close by, within 0.1 mile to Warren Street tube station (Northern and Victoria Lines), 0.2 miles to Euston Square station (Circle, Metropolitan, Hammersmith and City Lines) and 0.4 miles to Eu

- 1564 sq ft of lateral living space
- 2 large balconies with panoramic views
- 4 bedrooms
- 3 bathrooms
- Extensive landscape views from all principal rooms
- 20th floor
- Secure underground car parking
- Lift
- Close to Regents Park
- Equidistant to local Transport Links (Euston Square & Warren Street)

Floorplan

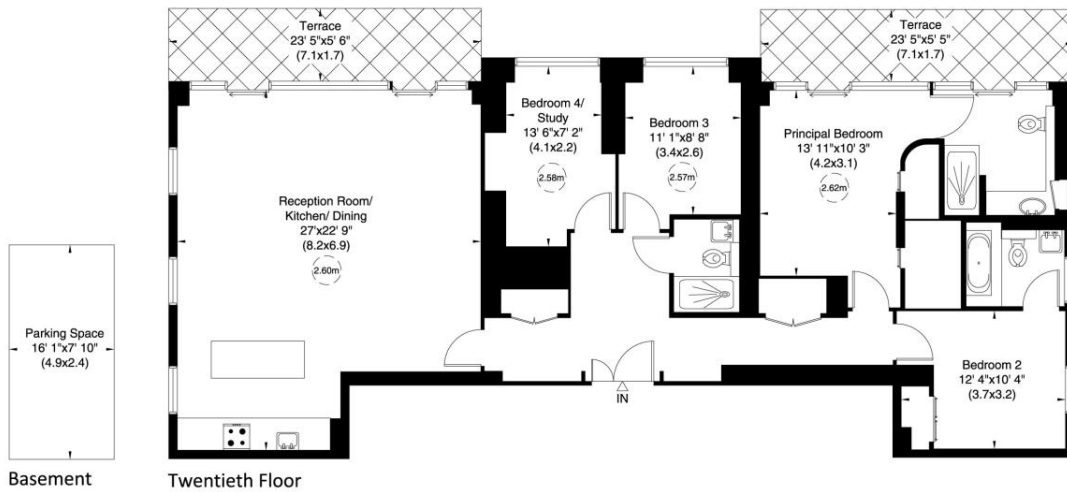
1,564 sq ft | 145 sq m

The Triton, Brock Street, NW1

Approximate Gross Internal Area

145 sq m / 1564 sq ft

Not to Scale, for identification only



Basement

Twentieth Floor

For guidance only and must not be relied upon as a statement of fact.
All measurements and areas are approximate only (and have been prepared in accordance with the current edition of the RICS Code of Measuring Practice).



Mayfair and Marylebone
St George Street,
London W1S 2FQ
+44 207 399 5550
mayfair@jll.com

Urban living, your way.

jll.co.uk/residential

© 2019 Jones Lang LaSalle IP, Inc. All rights reserved. All information contained herein is from sources deemed reliable; however, no representation or warranty is made to the accuracy thereof.

