

THE GARDENERS COTTAGE

Chilworth



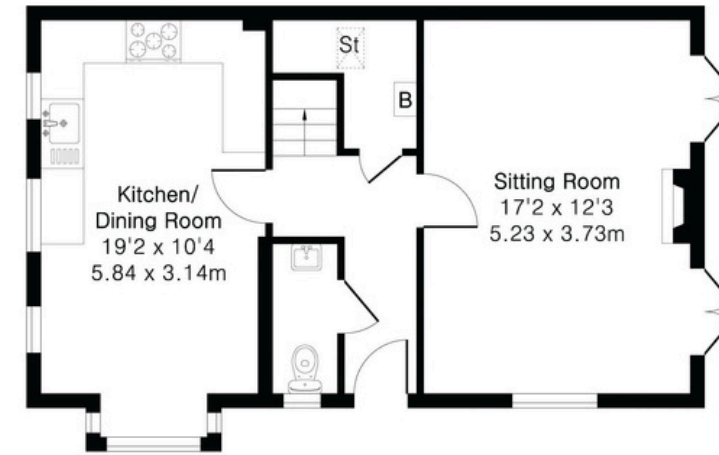

**Chantries
& Pewleys**
ESTATE AGENTS



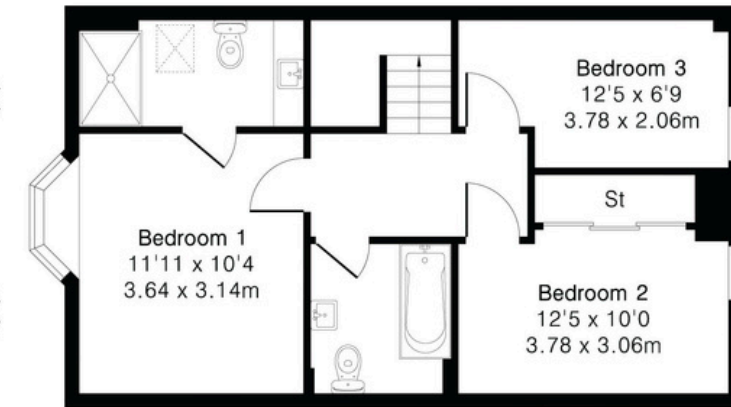
Approximate Gross Internal Area 1034 sq ft - 96 sq m

Ground Floor Area 517 sq ft – 48 sq m

First Floor Area 517 sq ft – 48 sq m



Ground Floor



First Floor

AT A GLANCE

- Detached "Arts and Crafts" styled cottage
- Beautifully presented and updated
- Private village location
- 3 bedrooms, 2 bathrooms
- Living room with wood burning stove
- Bespoke hand made Ella Austin kitchen
- Forecourt parking
- Landscaped rear garden
- Close to miles of open countryside



Tenure: Freehold. Council Tax Band: E. EPC: C

FROM THE AGENT

"One of the first things I noticed was how thoughtfully it has been updated, with interiors that sit beautifully alongside its Arts and Crafts character. Tucked behind gated access with a wraparound garden and a real sense of privacy, it feels warm, settled and wonderfully in keeping with its Chilworth setting."



Graham

Graham Brown
Sales Associate

BEAUTIFUL INTERIORS

Beautifully presented

The Gardners Cottage has been extensively updated by the current owner, with interiors carefully designed to complement the property's distinctive Arts and Crafts exterior.





KITCHEN

Beautifully designed

The cottage features a handcrafted bespoke kitchen by Ella Austin fitted with appliances and a boiling water tap, a wood-burning stove in the living room, cast-iron style radiators in the bedrooms and fitted Sonos ceiling speakers creating a home that is both characterful and comfortable.



BEDROOMS & BATHROOM





GARDEN & SETTING

Approached through a gated access, the property benefits from forecourt parking and a beautifully maintained garden that wraps around the cottage. The garden is lawned and stocked with mature shrubs, enhanced by atmospheric lighting, and enjoy a high degree of privacy, set back from the lane and screened by established trees.



 Chantries & Pewleys

01483 304344

shalford@chantriesandpewleys.com

Richmond House, 6 Station Row, Shalford, Surrey GU4 8BY