



10 Ashwell Street

Leighton Buzzard, Bedfordshire, LU7 1BG

£1,050 PCM



2



1



1



E


WATSONS
LETTING SINCE 1961

10 Ashwell Street, Leighton Buzzard, Bedfordshire, LU7 1BG

Watsons are delighted to offer for let this two bedroom end terrace house within a short walk of the Town Centre. The accommodation comprises: Lounge / diner, kitchen with oven and hob units, stairs to first floor, two bedrooms with built-in wardrobes, bathroom with shower above the bath, and small rear yard. The property is offered Unfurnished, and is available mid March.



Lounge / Diner

22'5 (max) x 13'2 (max)
(6.83m (max) x 4.01m
(max))

Kitchen

10'5(max) x 9'11 (max)
(3.18m(max) x 3.02m
(max))

Stairs to First Floor

Bedroom One

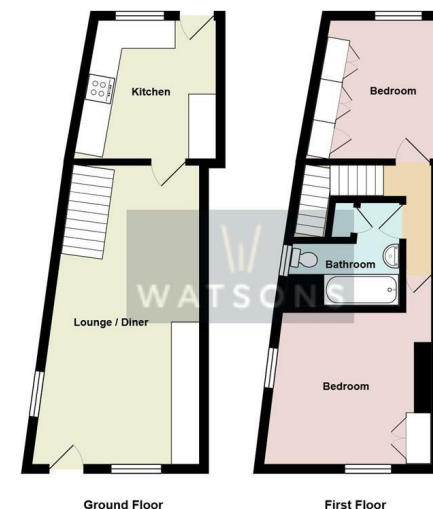
10'7 x 10'0 (3.23m x
3.05m)

Bedroom Two

9'11 (max) x 9'6 (into
storage) (3.02m (max) x
2.90m (into storage))

Bathroom

Rear Yard:



Total Area: 680 ft²
All measurements are approximate and for display purposes only

Measurements and floor plans are approximate and for guidance only. Any prospective Tenant should check all measurements. Floor plan coverings and fitments are for example only and may not represent the true finish of the property.

17 - 21 Ropa Court, Leighton Buzzard, Bedfordshire, LU7 1DU
Tel: 01525 378309 Email: info@watsonslb.co.uk www.watsonslb.co.uk