



William Mews, SW1X

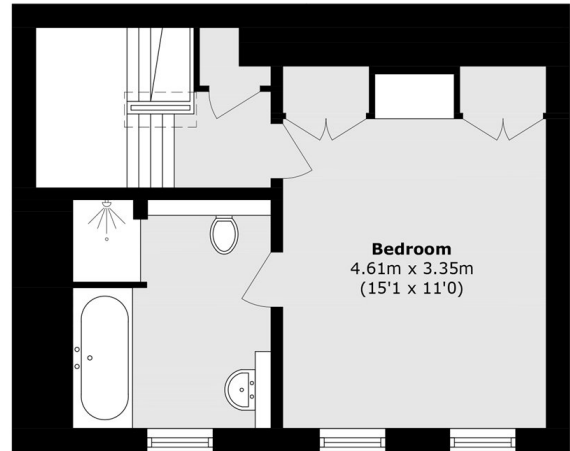
£1,025 Per week

A stunning two bedroom, two bathroom mews house spread over three floors and finished to fantastic standard. The property also benefits from its own private garage.

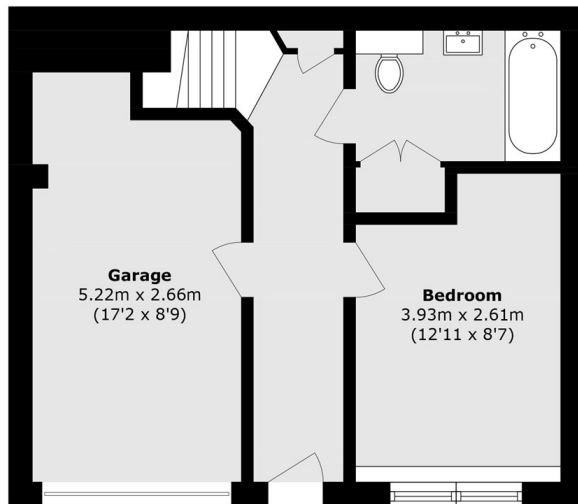
William Mews is a secure and quiet mews a stones throw away from Hyde Park and Buckingham Palace and yet this property this remains quintessentially quaint.

Features

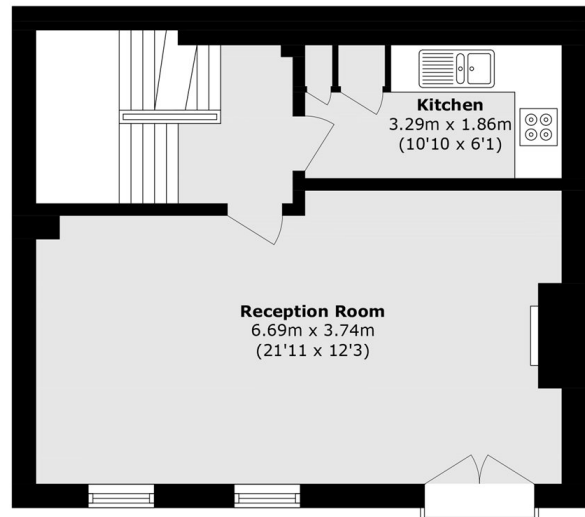
- Two Bedrooms
- Two Bathrooms
- Mews House
- Garage
- Wooden Flooring
- Unfurnished



Second Floor



Ground Floor



First Floor

Total area (approx.): 105.4 sq. m (1134.5 sq. ft)
(Including garage)