




## Plot 1, Newtown, Offenham, Evesham, Worcestershire, WR11 8RZ

From £385,000

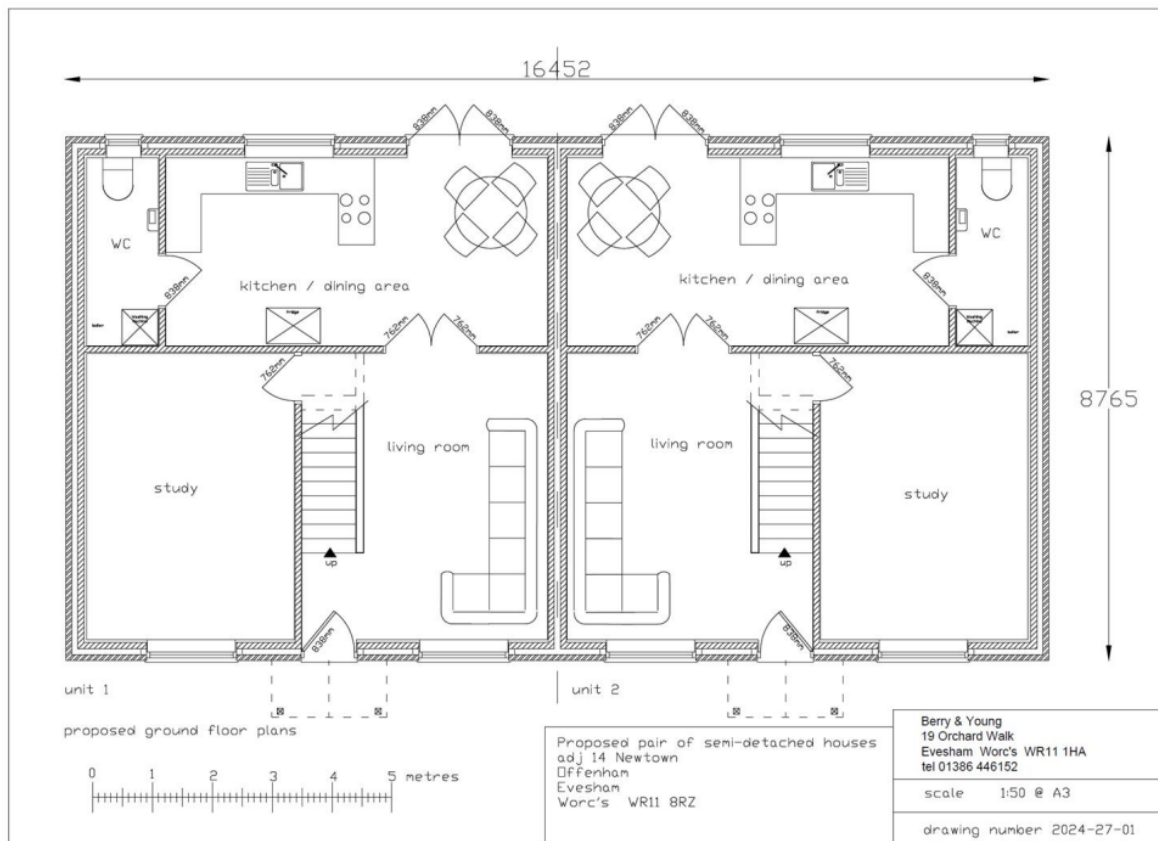
 3  2  2



3 Union Road, Shirley, Solihull B90 3BT

sales • new homes • land • commercial • mortgages • auction

- Brand New Spacious Three Bedroom Semi Detached Home
- Open Plan Fully Equipped Kitchen with Open Plan Dining Area
- Attractive Semi Rural Location
- Central Heating & Double Glazing
- Off Road Parking For Two Vehicles
- Purchase Off-Plan With The Opportunity To Personalise Internal Finishes
- Principle Bedroom With En-Suite Shower Room Off
- Excellent transport links to Evesham, Worcester, Stratford-upon-Avon, and Cheltenham.
- Two Reception Rooms
- Local Amenities and Countryside Walks Nearby



A stunning 3-bedroom semi-detached home energy efficient home in the sought-after village of Offenham, Evesham. Designed with modern family living in mind, this property offers a bright open plan kitchen/diner/lounge for everyday life and entertaining, complemented by a separate lounge for added comfort and a quiet study space. Upstairs, a principle bedroom with ensuite, a stylish family bathroom, and two further bedrooms provide generous accommodation. With a downstairs W.C. private garden and offroad parking for 2 cars. This home combines comfort,

practicality, and contemporary style in a desirable Worcestershire setting. The property comes with underfloor heating to the ground floor and radiators to the first floor.