

## The Quadrangle, SW10

£1,269 Per week

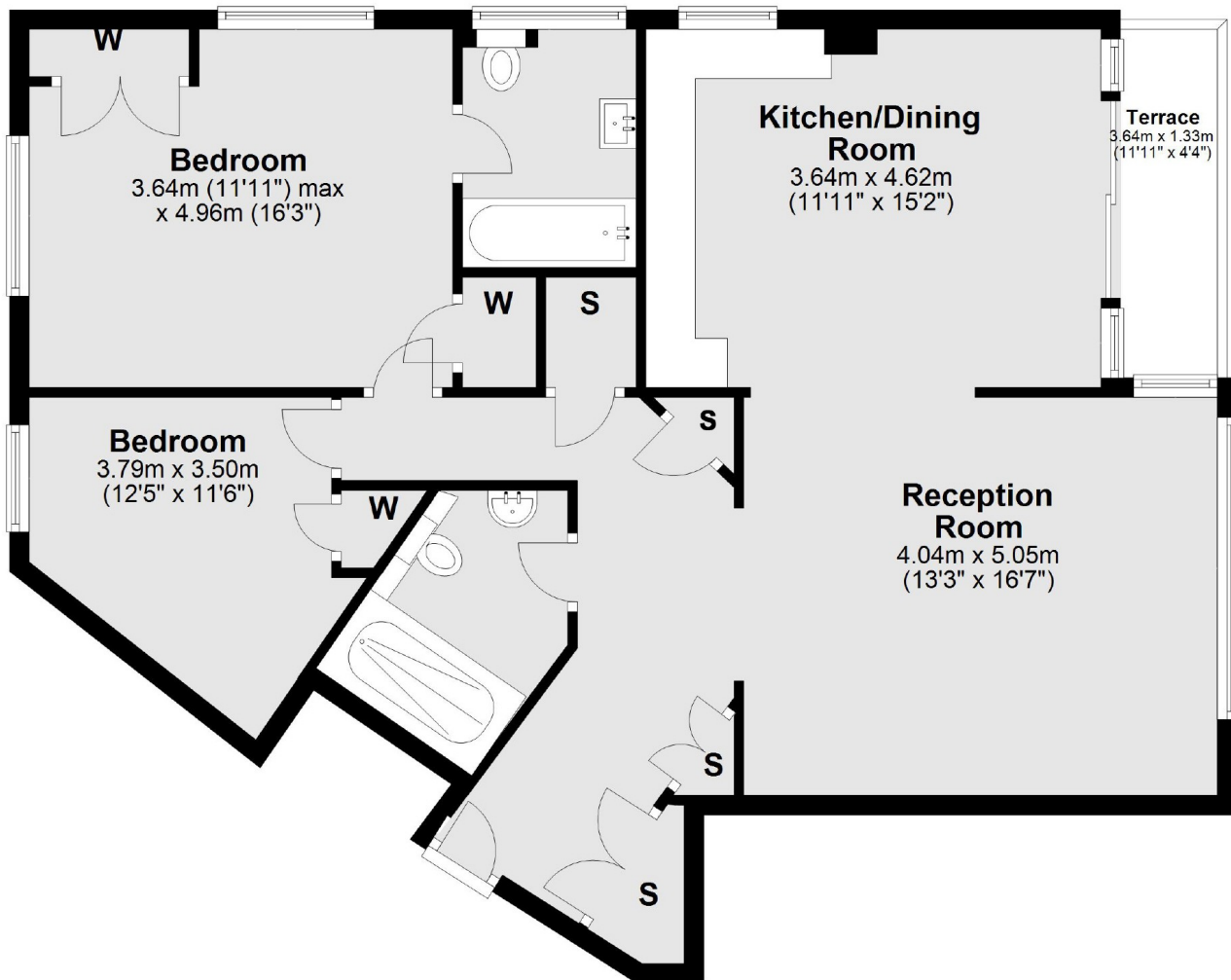
A stunning two bedroom, two bathroom fourth floor apartment with a private balcony and a fabulous open plan sitting room/kitchen/dining room. One secure underground car park space.

The Quadrangle is conveniently situated for Imperial Wharf overground station which has links to the underground at West Brompton (District Line). Supermarket megastore is within easy reach.

### Features

- Two Double Bedrooms
- Two Bathrooms
- Open Plan Kitchen
- Private Balcony
- Porter
- Underground Parking space

# The Quadrangle, London, SW10



## Fourth Floor

Total area: approx. 87.1 sq. metres (937.3 sq. feet)