



Guide Price
£290,000

Freehold

3x  2x  2x 

**Milton Close, Dover,
Kent, CT16**

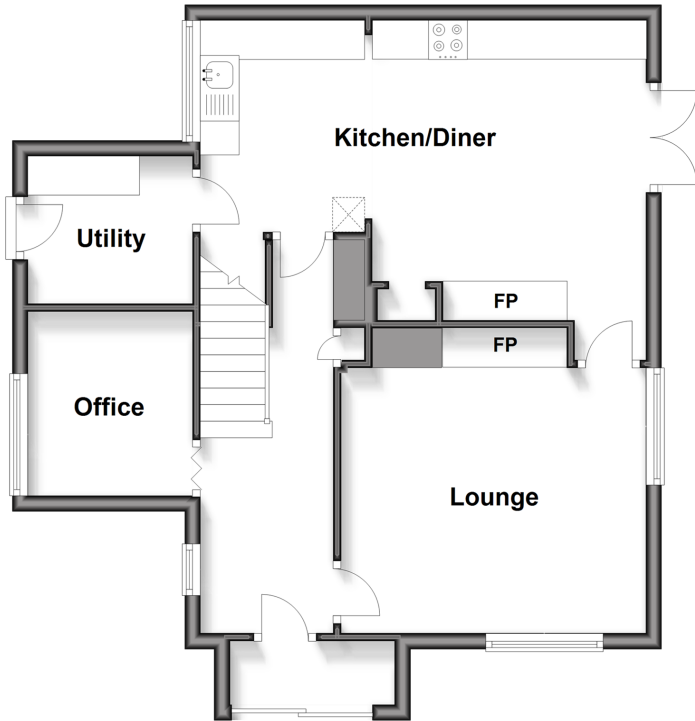
OVER 60?

Secure this property
for up to **59% less!**

Wards
Helping you move forwards

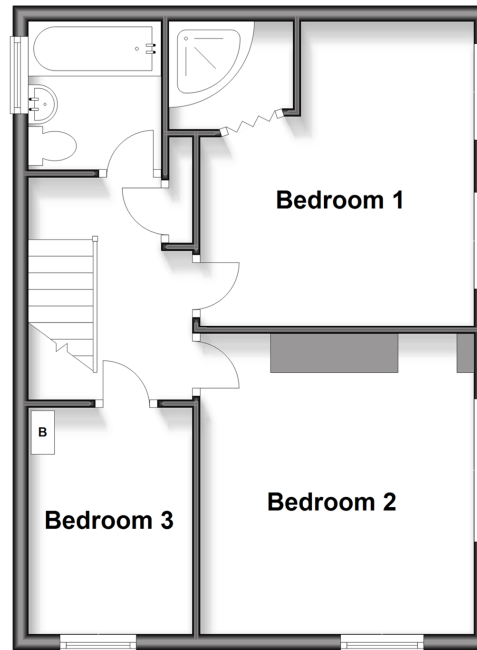
Split Level Ground Floor

Approx. 56.5 sq. metres (608.3 sq. feet)



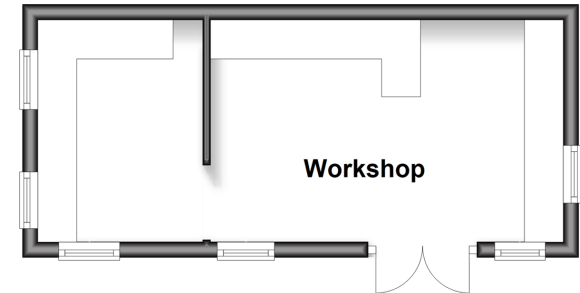
First Floor

Approx. 44.9 sq. metres (483.7 sq. feet)



Outbuilding

Approx. 19.2 sq. metres (206.6 sq. feet)



Accommodation

SPLIT LEVEL GROUND FLOOR

Entrance Porch
Entrance Hallway
Lounge : 12'11 x 10'6 (3.94m x 3.20m)
Kitchen/Diner : 18'9 x 14'2 (5.72m x 4.32m)
Utility : 7'1 x 6'9 (2.16m x 2.06m)
Office : 7'9 x 7'1 (2.36m x 2.16m)

FIRST FLOOR

Landing
Bedroom 3: 9'1 x 7'7 (2.77m x 2.31m)
Bedroom 2 : 12'1 x 11'2 (3.69m x 3.41m)
Bedroom 1 : 12'7 x 11'2 (3.84m x 3.41m)
En-Suite Shower Room
Family Bathroom : 6'6 x 5'10 (1.98m x 1.78m)

OUTBUILDING

Workshop

OUTSIDE

Front Garden
Rear Garden
Off Road Parking



Main features

- Family home on a corner plot
- Large wrap around garden
- Off street parking and large workshop/outbuilding
- Beautifully presented throughout with a separate lounge and dining room
- Stunning elevated views across Dover



Nearest Schools

Primary Schools: Green Park Community Primary 0.1 miles, Barton Junior School 0.7 miles, Charlton C of E Primary 0.7 miles
Secondary Schools: Dover Christchurch Academy 0.3 miles, St Edmund's Catholic School 0.7 miles.



Transport Information

Train Stations: Kearsney 1.2 miles, Dover Priory 1.3 miles, Martin Mill 2.7 miles



Address

Milton Close, Dover, Kent, CT16



Directions

For directions to this property please contact us.



Wards
Helping you move forwards

Call Dover Branch 01304 214876 ■ wardsofkent.co.uk



■ If buying to rent, please check if Local Authority licensing schemes apply before proceeding

■ Through a Homewise Home For Life Plan people aged 60+ can secure this property for up to 59% less, by purchasing a Lifetime Lease



10735950/20260514/CDH/OV