



## Blue Anchor Lane, SE16

£500,000

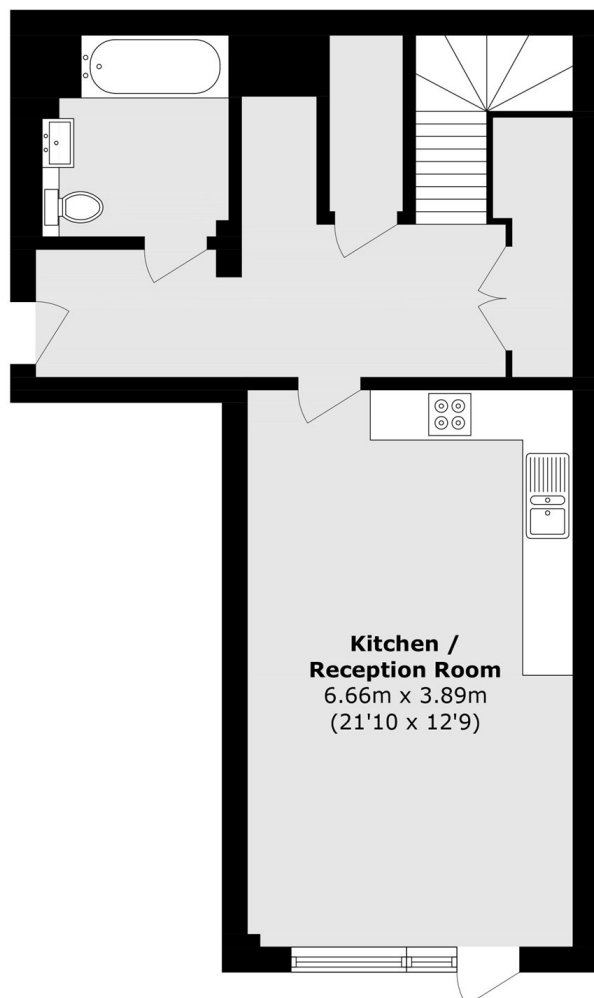
Arranged over two floors and spanning almost 1,100sqft, this two double bedroom flat is immaculately presented and boasts a large open plan kitchen and living area, two private balconies, two bathrooms and ample storage.

Bridgestone House is located 0.4 miles from Bermondsey station offering excellent transport links to anywhere in London. A wide range of shops, cafés, restaurants and artisan food markets are moments away.

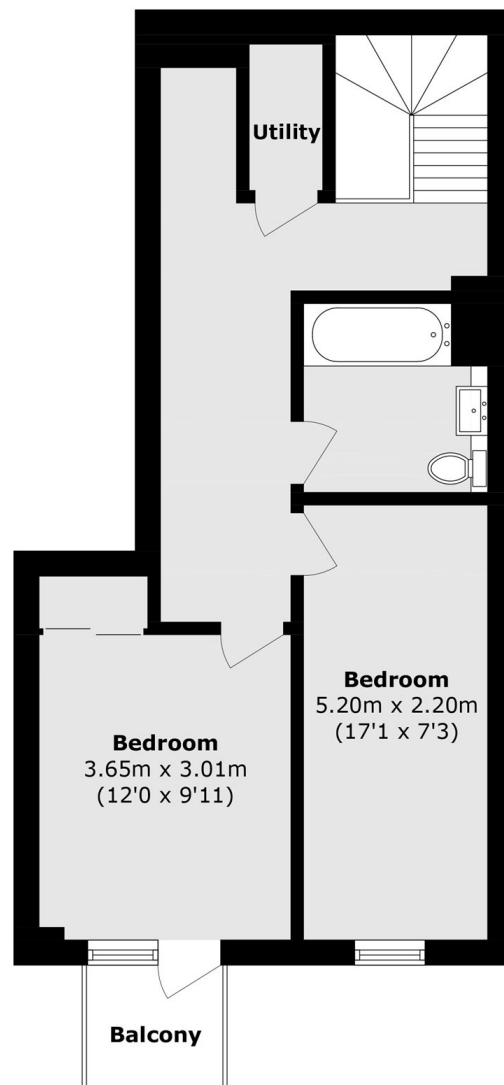
### Features

- Two Double Bedrooms
- Two Bathrooms
- Fantastic Condition
- Excellent Location
- Two Private Balconies
- Chain Free

# Blue Anchor Lane, London, SE16



**Ground Floor**



**First Floor**

Total area (approx.): 100.7 sq. m (1083.9 sq. ft)

Balcony area (approx.): 2.6 sq. m (27.9 sq. ft)