



Wheatsheaf Way, Linton Cambridge
£230,000 Leasehold

**Sharman
Quinney**

Key Features

 2  1  D  B



999 Years remaining as of 01 Jan 1976

£Ask Agent Ground Rent

Review due: Ask Agent

£5.00 Service Charge p/a

Review due: 04/2026

- Spacious ground floor maisonette
- Bright living room with direct access to a full-width conservatory
- Two well-proportioned bedrooms
- Private, low-maintenance west-facing garden
- Garage and off-road parking
- Gas central heating and double glazing throughout
- Long 999-year lease from 1976 with just £15 annual maintenance

This smart and spacious ground-floor maisonette presents an excellent opportunity for first-time buyers, investors, or those seeking to downsize.



Well maintained throughout, it offers generous living space paired with practical features, including a long lease, private garden, garage, and parking.

The living room is impressively sized, filled with natural light, and provides a welcoming environment for everyday relaxation.

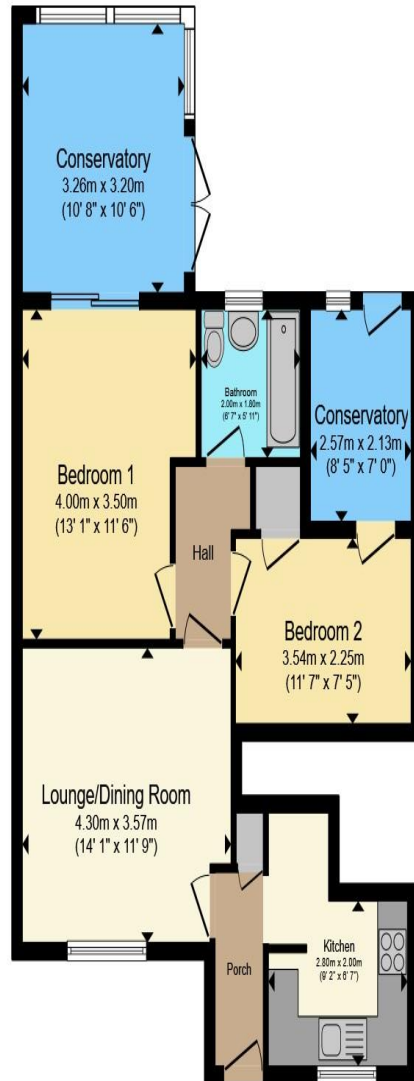
Double doors lead through to the conservatory, creating a versatile additional reception room that can be enjoyed year-round and offers seamless access to the garden.

The well-fitted kitchen features a good range of units, making efficient use of the space and providing a bright, functional setting for daily cooking. A separate utility room further enhances practicality with valuable extra storage.

Bedroom one is notably spacious, providing ample room for furnishings and a comfortable retreat. Bedroom two is also well proportioned, ideal as a guest room, home office, or child's bedroom.

A well-appointed bathroom completes the accommodation.





Ground Floor

Total floor area 71.4 m² (769 sq.ft.) approx

This floor plan is for illustrative purposes only. It is not drawn to scale. Any measurements, floor areas (including any total floor area), openings and orientation are approximate. No details are guaranteed, they cannot be relied upon for any purpose and they do not form part of any agreement. No liability is taken for any error, omission or misstatement. A party must rely upon its own inspection(s). Powered by www.propertybox.io

**Sharman
Quinney**

Outside, the west-facing garden is designed for easy maintenance and is perfectly positioned to enjoy the afternoon sun. The added benefit of a garage and parking is a rare advantage for a home of this style.

To view this property call Sharman Quinney on:
01223 844760

Selling your property?

Contact us to arrange a **FREE** home valuation.

 01223 844760

 49 Woollards Lane, Great Shelford, CAMBRIDGE,
Cambridgeshire, CB22 5LZ

 greatshelford@sharmanquinney.co.uk

 www.sharmanquinney.co.uk



 SCAN ME



Sharman Quinney Holdings Limited is registered in England and Wales under company number 4174227, Registered Office is Cumbria House, 16-20 Hockliffe Street, Leighton Buzzard, Bedfordshire, LU7 1GN. VAT Registration Number is 500 2481 05.

1: These particulars do not constitute part or all of an offer or contract. 2: The measurements indicated are supplied for guidance only and as such must be considered incorrect. 3: Potential buyers are advised to recheck the measurements before committing to any expense. 4: Sharman Quinney has not tested any apparatus, equipment, fixtures, fittings or services and it is the buyers interests to check the working condition of any appliances. 5: Sharman Quinney has not sought to verify the legal title of the property and buyers must obtain verification from their legal representative. 6: Intending purchasers will be asked to produce identification documentation at a later stage and we would ask your co-operation in order that there will be no delay in agreeing the sale. Ref: :GTS103032 - 0003

