

Ashmore Road, W9

£385,000

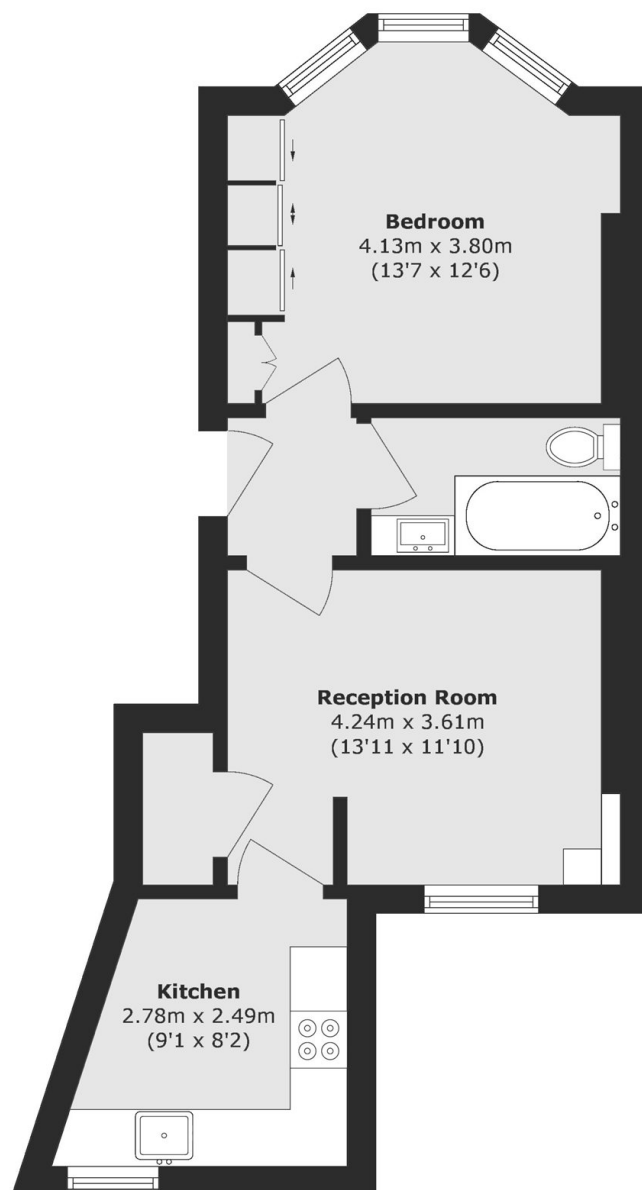
Situated on the raised ground floor of a well-maintained Victorian conversion, this light and bright flat has a large bedroom with built-in storage and a bay window, a separate kitchen, double glazed windows and wooden flooring throughout

Ashmore Road is a tree-lined street located just a couple of minutes' walk from Queen's Park station (Bakerloo line and Overground), Westbourne Park, Little Venice, Portobello, Paddington Rec and the local cafés, restaurants and shop on the high street.

Features

- End of Terrace Conversion
- Raised Ground Floor Flat
- Separate Kitchen
- Double Glazed Windows
- Share Of Freehold
- Great Condition

Ashmore Road, Maida Vale, W9



Total area (approx.): 44.1 sq. m (474.6 sq. ft)