

Ashtons



30 Thirkleby Way YO10 3QA

£1,650 Per Month

3



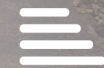
1



3



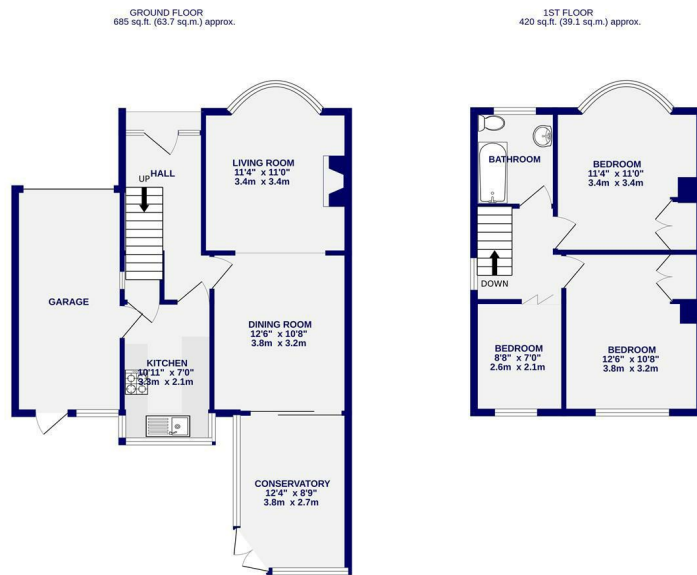
C



This well presented three bedroom semi detached house is located in the popular village of Osbaldwick, coveted for its position for easy access to the city centre and outer ring road, with many local amenities on offer. Offered for let on a furnished/part furnished basis and briefly comprises; Entrance hallway, living room with bay fronted window and wood burner stove, archway through to dining room leading to conservatory with double doors to the rear patio areas. The kitchen is equipped with an electric oven, hob, dishwasher and fridge, door to integral garage with freezer and washing machine. To the first floor there are two double bedrooms, one single bedroom and house bathroom with shower over bath. Externally the property benefits from driveway parking, garage and rear landscaped garden with raised beds.

Would consider a pet

Available now / 12 Month Tenancy / Deposit £1750 / Council Tax Band C / EPC Rating C



TOTAL FLOOR AREA: 1105 sq.ft. (102.7 sq.m.) approx.
 Whilst every effort has been made to ensure the accuracy of the floorplans, measurements of rooms and any other areas are approximate. It should be noted that the floorplans are not to scale and are for illustrative purposes only and should be used as such by any prospective purchaser. The fixtures, fittings and appliances shown have not been tested and no guarantee as to their operability.
 Made with Metropac ©2026



Ashtons Lettings



01904 731404



lettings@ashtonsnet.com

