



1 Houghton Close, London

London

Offers in Region of £450,000



1 Houghton Close

London, London

Well-presented two bedroom ground floor flat in Dalston E8 with private 30ft garden, modern kitchen, spacious reception, and excellent transport links near Dalston Junction and Kingsland.

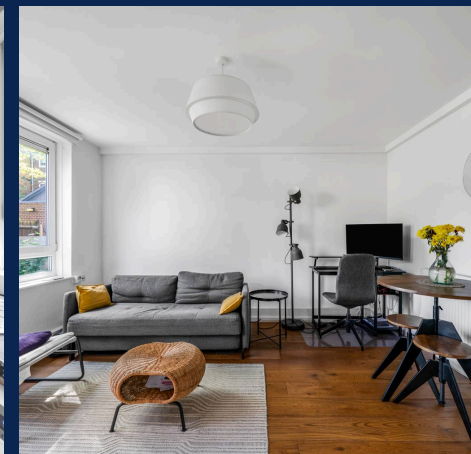
Council Tax band: B

Tenure: Leasehold

EPC Energy Efficiency Rating: C

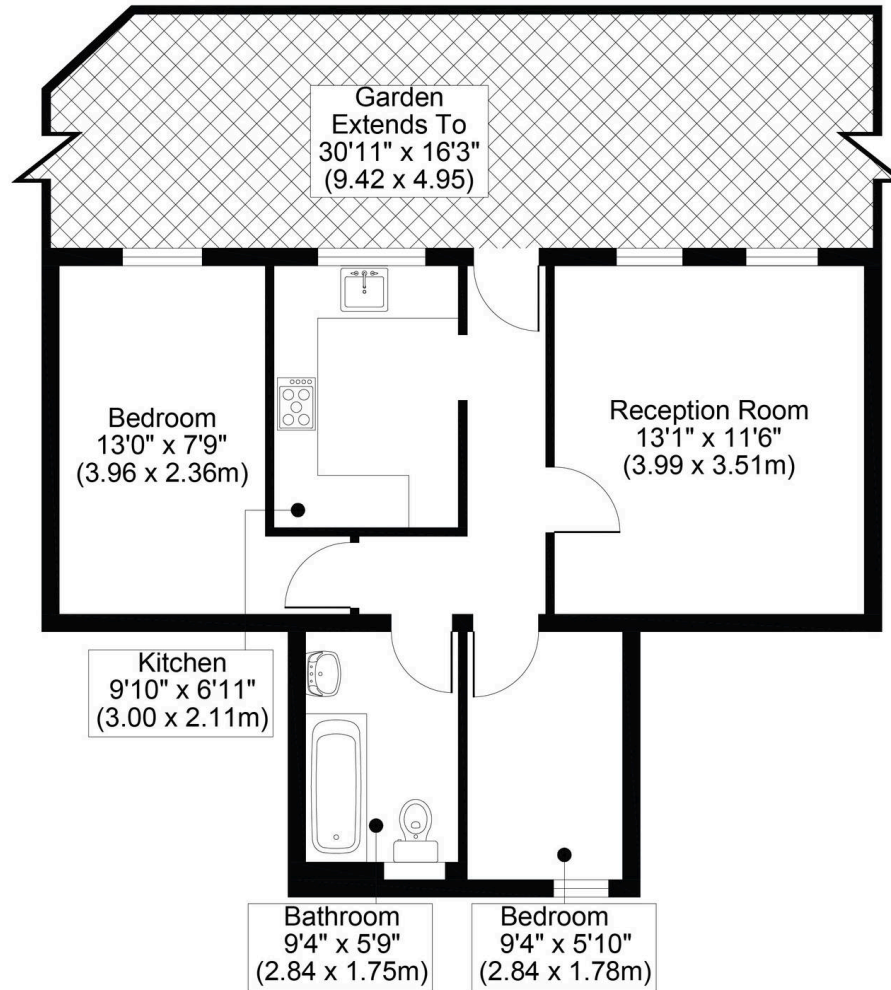
EPC Environmental Impact Rating: C

- Two Bedroom Apartment
- Ground Floor
- Private Garden
- Excellent Condition
- Great Location
- Close to Dalston Junction Station
- Many Local Amenities



HOUGHTON CLOSE, E8

TOTAL APPROX FLOOR PLAN AREA 523 SQ.FT (49 SQ.M)



GROUND FLOOR

All measurements, walls, doors, windows, fittings and their appliances, their size and locations are shown conventionally and are approximate only and cannot be regarded as being a representation either by the seller or his agent.



Knight Bishop

Unit G6, 203-213 Mare Street - E8 3JS

02037731221

eastlondon@knightbishop.co.uk

www.knightbishop.co.uk/

