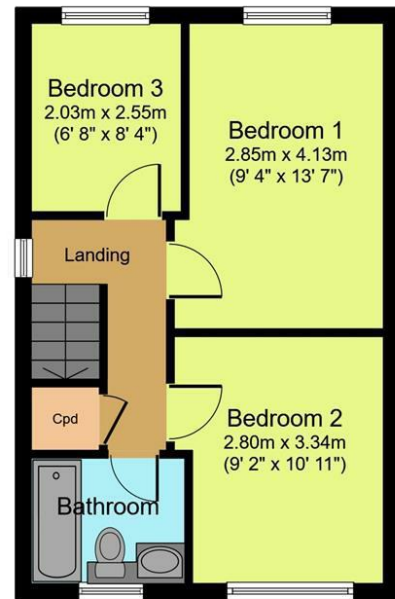


Ground Floor



First Floor

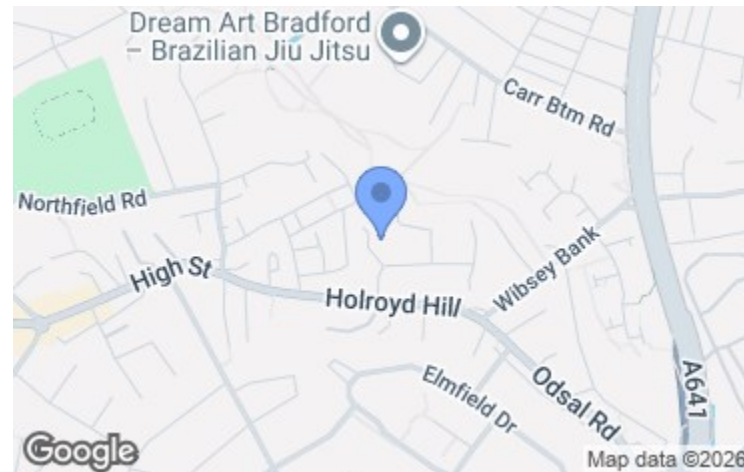
Created using Vision Publisher™



Energy Efficiency Rating		Current	Potential
Very energy efficient - lower running costs			
(92 plus) A			
(81-91) B			
(69-80) C			
(55-68) D			
(39-54) E			
(21-38) F			
(1-20) G			
Not energy efficient - higher running costs			
England & Wales		72	78
EU Directive 2002/91/EC			

Viewing arrangements

Strictly by appointment through WW Estates
 01274 693737
 wibsey@wwestateagents.com



Directions

See mapping.



Hector Close, Bradford, BD6 1QE

£295,000

5 - 7 Beacon Road, Wibsey, Bradford, BD6 3HB | 01274 693737 | wibsey@wwestateagents.com | www.wwestateagents.com

IMPORTANT: we would like to inform prospective purchasers that these sales particulars have been prepared as a general guide only. A detailed survey has not been carried out, nor the services, appliances and fittings tested. Room sizes should not be relied upon for furnishing purposes and are approximate. If floor plans are included, they are for guidance only and illustration purposes only and may not be to scale. If there are any important matters likely to affect your decision to buy, please contact us before viewing the property.



Hector Close, Bradford, BD6 1QE



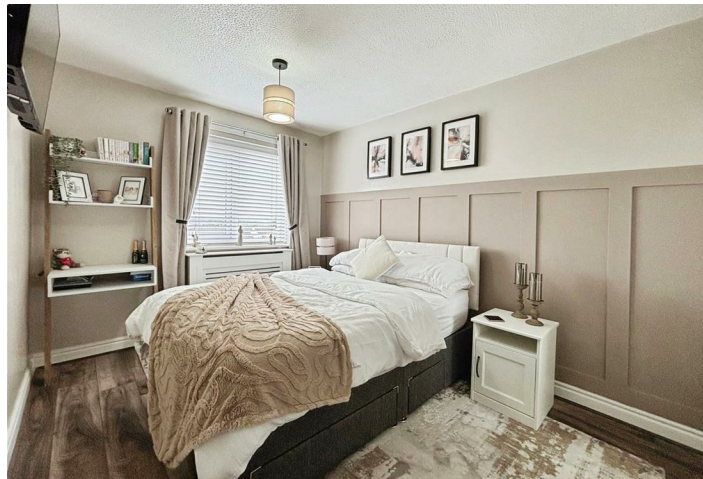
Beautifully Presented Three Bedroom Detached House *** Two Reception Rooms *** Ground Floor WC *** Low Maintenance Garden *** Garage And Driveway. Located in the highly sought-after cul-de-sac of Hector Close, Bradford, this beautifully presented and spacious three-bedroom detached house offers a perfect blend of comfort and modern living. Upon entering, you are greeted by a welcoming entrance hall that leads to a generous lounge, complete with a cosy gas fire and double doors that open into a stunning kitchen. This well-appointed kitchen features contemporary fitted wall and base units, an integrated fridge/freezer, dishwasher, microwave, washing machine, dryer, double oven, and an induction hob with an extractor hood above. The breakfast bar provides a delightful space for casual dining, while an open archway leads to the charming orangery, which boasts a gas fire and French doors that open onto the rear garden.

The first floor comprises three well-proportioned bedrooms, two of which are fitted with Sharps

wardrobes, providing ample storage space. The modern family bathroom is equipped with a bath and shower over, a low-level WC, and a stylish vanity hand wash unit, ensuring convenience for the whole family.

Externally, the property benefits from a garage and a driveway providing off road parking for three cars. The low-maintenance enclosed rear garden offers a private outdoor space, perfect for relaxation or entertaining guests.

This delightful home is ideal for families seeking a tranquil yet accessible location, with local amenities and transport links within easy reach. Don't miss the opportunity to make this exceptional property your new home.



Train
your text here



Primary School
your text here



Secondary School
your text here

<p>Fixtures & fittings Beautifully presented three bedroom detached house in highly desirable cul-de-sac location.</p> <p>Rating authority Borough Council Tax Band D</p>	<p>Services INDEPENDENT MORTGAGE & FINANCIAL ADVICE AVAILABLE. HOME MOVERS - FIRST TIME BUYER - REMORTGAGES ETC. WW Estates introduce to Mortgages with JD, Hanie & Co, who are authorised and regulated by the Financial conduct Authority.</p> <p>Tenure Freehold</p>
---	---