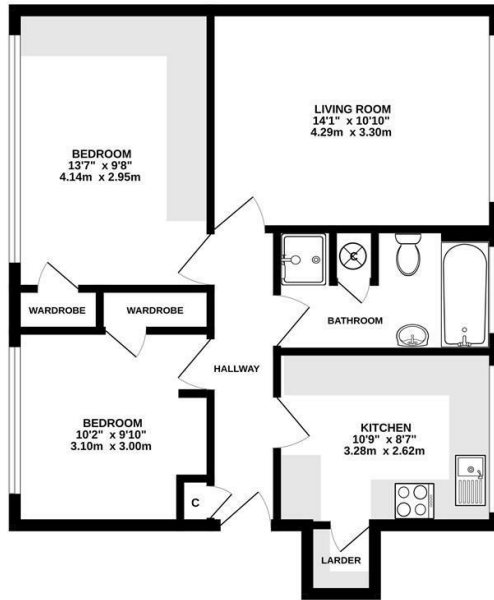




Keith
Ashton

Tem Way,
Brentwood

TOP FLOOR
615 sq.ft. (57.1 sq.m.) approx.



TOTAL FLOOR AREA: 615 sq.ft. (57.1 sq.m.) approx.
Measurements are approximate. Not to scale. Illustrative purposes only.
Made with Mirosoft CO2C2

Offers In Excess Of £250,000

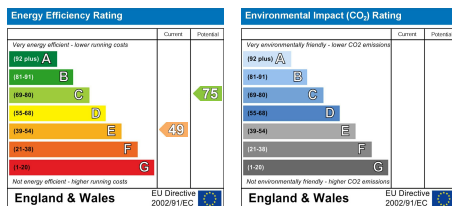


11 Tern Court Tern Way, Brentwood, CM14 5NZ

Situated to the west of Brentwood and conveniently within easy reach of the High Street, A12 and M25, this spacious two-bedroom top-floor apartment is offered with No Onward Chain.

The internal accommodation has been newly painted and features generously sized rooms throughout, including a bright living room with a large window providing plenty of natural light and far-reaching views. The well-equipped kitchen offers ample eye and base level storage units, extensive worktop space, and enjoys similar elevated views. There are two double bedrooms, both with built-in wardrobes, along with a family bathroom featuring a four-piece suite. Externally, the property benefits from a garage en bloc, a communal rear garden, and residents' off-street parking to the front.

Ideally located within the catchment area for St Peter's Primary School and just a short drive from Brentwood Station and the Elizabeth Line, this apartment combines convenience, space, and excellent transport links.



SERVICES:

Local Authority: Brentwood
Council tax band: C
Post code: CM14 5NZ

VIEWING:

Strictly by prior arrangement with Keith Ashton Estate Agents

OPENING HOURS:

Monday to Friday: 8.45AM - 6.30PM | Saturdays: 9AM - 5.30PM | Sundays: 10AM - 2PM

MORTGAGE INFORMATION:

We offer the additional facility of an in-house Independent Financial Adviser who will access all mortgage lenders with the purpose of providing you with the benefit of choice. For quotations or comparables please call 01277 260858 or visit our interactive website at www.mortgagebusiness.net



We the Agent have not tested any apparatus, fittings or services for this property. The plot size is intended merely as a guide and has not been officially measured or verified by the Agent. Photographs are for illustration only and may depict items which are not for sale or included in the sale of the property. As part of the service we offer we may recommend ancillary services to you which we believe may help you with your property transaction. We wish to make you aware, that should you decide to use these services we will receive a referral fee. For full and detailed information please visit 'terms and conditions' on our website www.keithashton.co.uk

Brentwood
Tel. 01277 260858

Village Office
Tel. 01277 375757

Lettings Office
Tel. 01277 202200

Explore more @ www.keithashton.co.uk

