



11 Ridgway Road, Luton, Bedfordshire, LU2 7RP

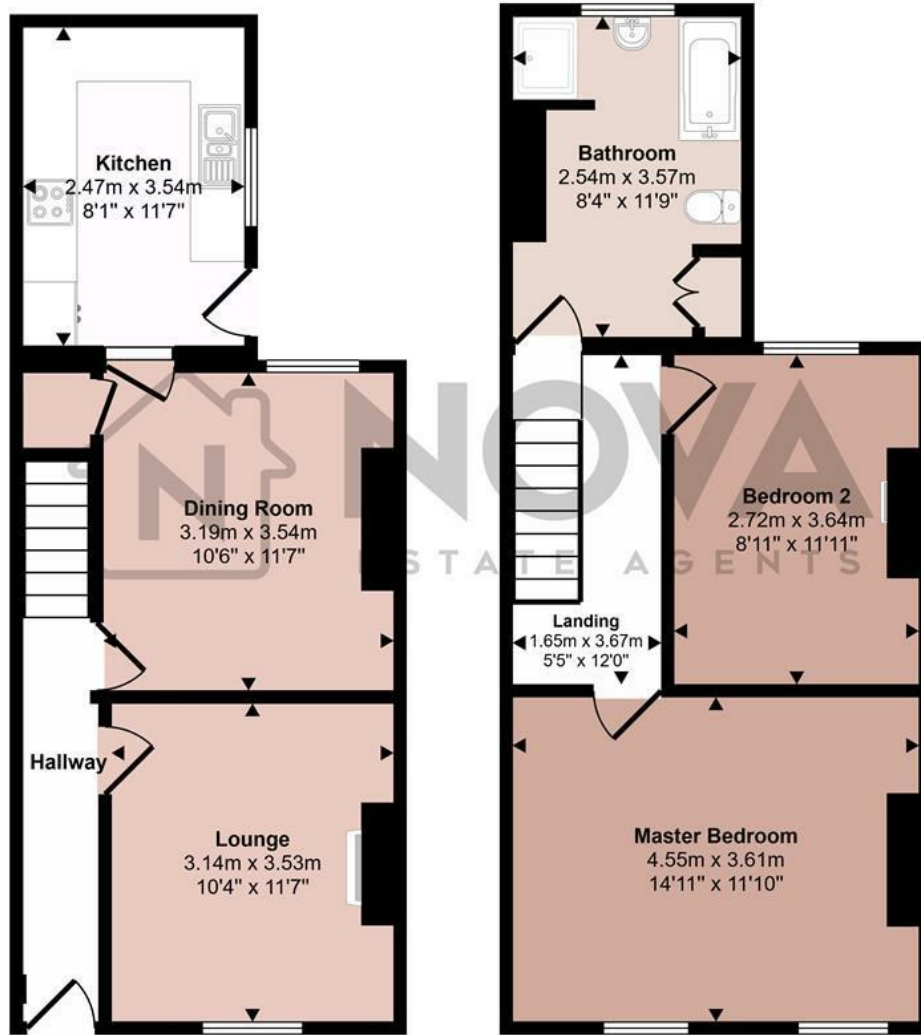
Presenting a charming two bedroom mid terrace property on Ridgeway Road in Luton. This home is an excellent investment opportunity with a tenant currently in place, providing immediate rental income.

The property features a spacious lounge, a well appointed kitchen and a dining area. Also, this property consists of two generously sized bedrooms, and a huge modern bathroom. Additionally, there's a low maintenance rear garden. Conveniently located near amenities and transport links such as the M1 junction and train stations. This property is a fantastic investment with a ready made income stream. Sold chain free. Call Nova Estate Agents to arrange a viewing.

- Nova estate agents
- Walking distance to the train station
- Close to Local Amenities
- Two double bedrooms
- Rear Garden
- Great school catchments
- Chain Free
- On Road Parking

£250,000

Approx Gross Internal Area
82 sq m / 888 sq ft



Ground Floor
Approx 39 sq m / 422 sq ft

First Floor
Approx 43 sq m / 465 sq ft

This floorplan is only for illustrative purposes and is not to scale. Measurements of rooms, doors, windows, and any items are approximate and no responsibility is taken for any error, omission or mis-statement. Icons of items such as bathroom suites are representations only and may not look like the real items. Made with Made Snappy 360.

