



## Harmood Street, NW1

£775,000



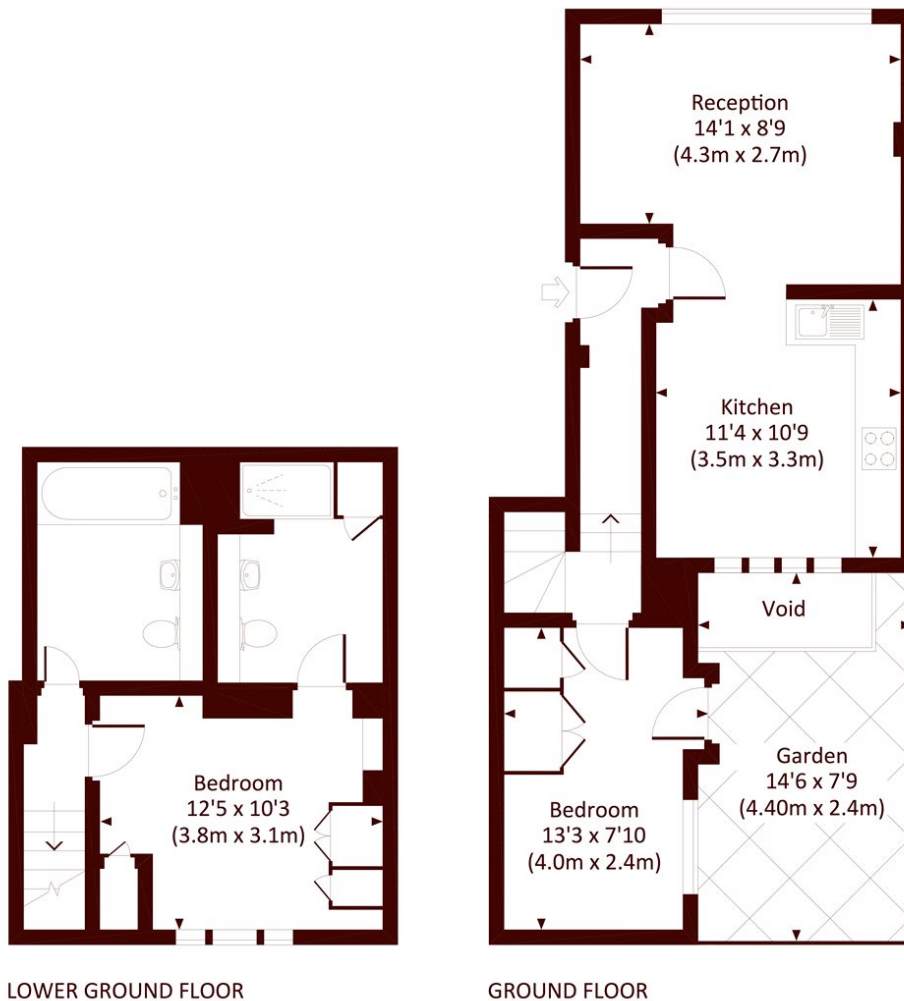
- Two bedrooms
- Two bathrooms

- Outside space
- Period conversion

- Split-level
- Quiet street

## HARMOOD STREET, NW1

Approx. gross internal area  
810 Sq Ft. / 75.3 Sq M.



All measurements have been made in accordance with RICS Code of Measuring Practice which are approximate only and only for illustrative purposes. For the avoidance of doubt, Dowling Jones Design shall not be liable for any reliance on these measurements. © 2017 www.dowlingjones.com 020 7610 9933

### Marsh & Parsons Camden

27 Parkway, London, NW1  
7PN  
020 7244 2200

We aim to make our particulars both accurate and reliable. However, they are not guaranteed; nor do they form part of an offer or contract. If you require clarification on any points then please contact us, especially if you're traveling some distance to view. Please note that appliances and heating systems have not been tested and therefore no warranties can be given as to their good working order.