

VISIOLI

REAL ESTATE

**2 The Water Tower, White Cross
Place, Aldershot, GU11 4EY**



3 Bedrooms



2 Bathrooms



1800 sq ft

2 The Water Tower, White Cross Place, Aldershot, GU11 4EY

£590,000

Description

Set within the prestigious Gun Hill Park development, this exceptional split level maisonette forms part of the historic Water Tower conversion at the former Cambridge Military Hospital. Offering a rare blend of historic character and contemporary luxury, the property is arranged over three impressive floors and benefits from its own private entrance.

The accommodation centres around a spectacular open plan living, dining and kitchen space with ceilings approaching four metres in height, elegant sash style timber double glazed windows and beautifully restored period features throughout. The contemporary kitchen is finished to a high standard with integrated appliances, while doors open onto a large private balcony with astro turf and seating space, enjoying elevated views across the development.

Upstairs, the property offers three well proportioned double bedrooms, including a spacious principal bedroom with luxury en-suite, alongside a stylish family bathroom finished with premium smart fittings. Combining outstanding architecture, modern specification and rich military heritage, this is a truly unique home within one of Aldershot's most sought after developments.



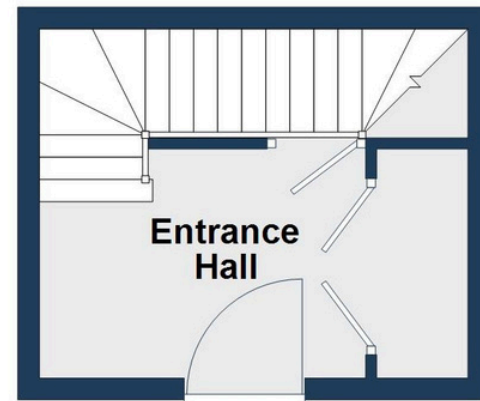




The Water Tower, White Cross Place, GU11 4EY

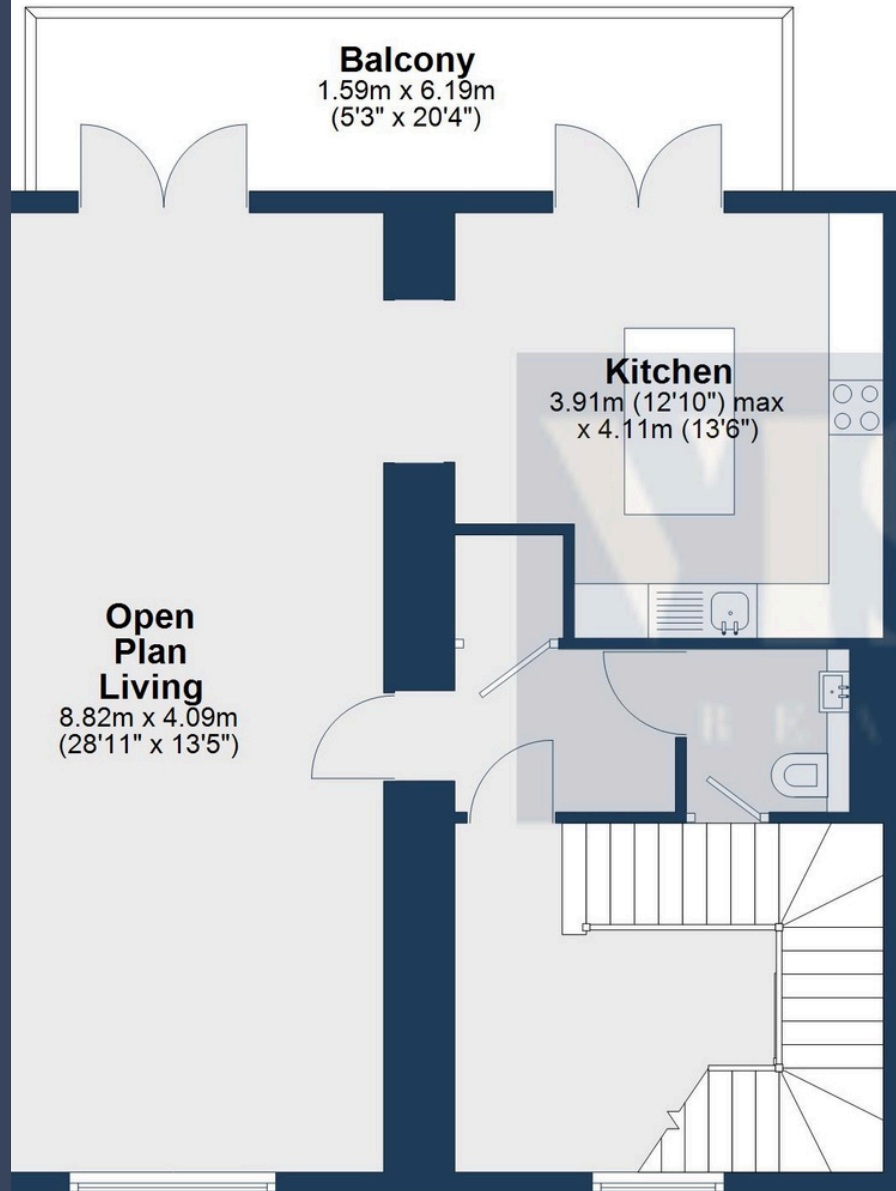
Ground Floor

Approx. 12.6 sq. metres (136.1 sq. feet)



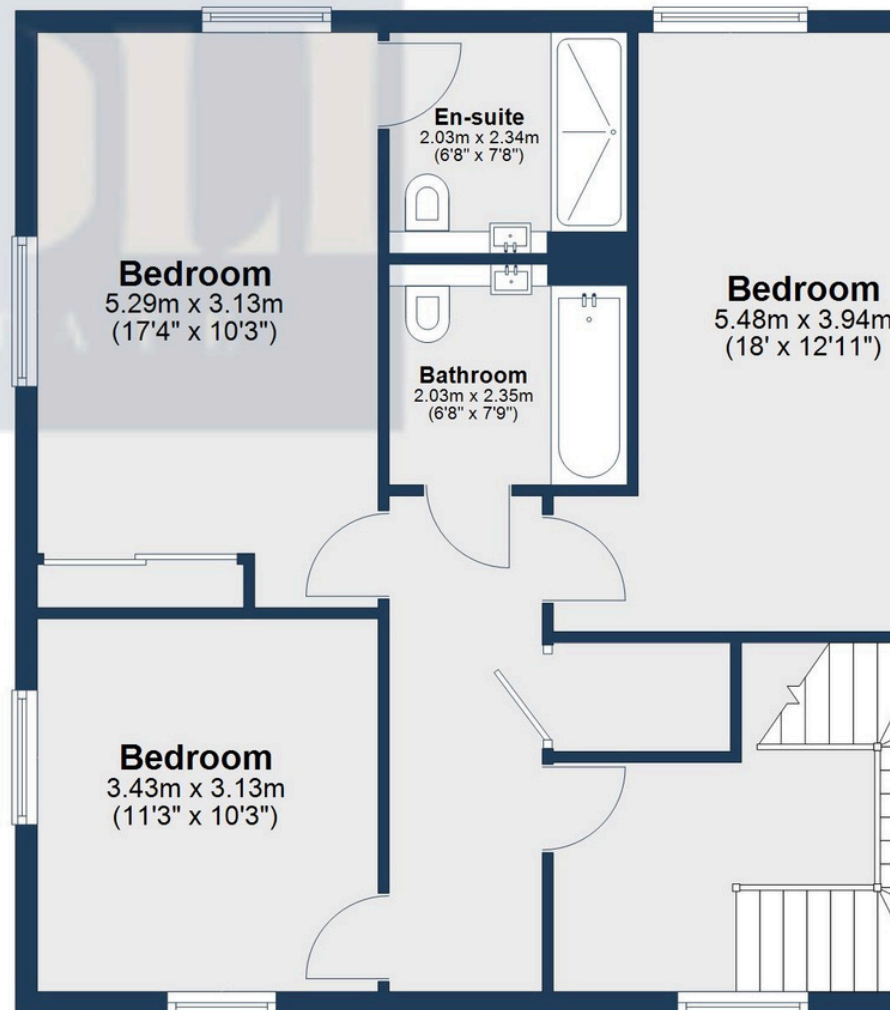
First Floor

Main area: approx. 77.2 sq. metres (831.1 sq. feet)
Plus balconies, approx. 9.8 sq. metres (105.9 sq. feet)



Second Floor

Approx. 77.4 sq. metres (833.2 sq. feet)



Main area: Approx. 167.3 sq. metres (1800.4 sq. feet)

Plus balconies, approx. 9.8 sq. metres (105.9 sq. feet)

This plan has been produced by E Property Marketing for illustrative purposes only and should be used as such by any prospective purchaser. Whilst every effort has been made to ensure the accuracy of this plan, measurements of doors, windows, rooms, and other items are approximate. No responsibility is taken for any error, omission, or misstatement.

Contact Us



01252210145



visiolirealestate.co.uk



sales@visiolirealestate.co.uk