

# FLETCHERS

ESTATE AGENTS



## Heathfield Terrace, W4

£750,000

A rare opportunity to purchase a large two bedroom flat with over 1200 sqf of space right in the heart of Chiswick.

The property looks over Turnham Green and has the benefit of 2 private balconies with one being a south facing aspect. The property is in fantastic condition allowing buyers to move right in with no major works needed from the outset.

Goodwood House also comes with a share of the freehold meaning buyers have greater control over any changes they wish to make to the flat and private parking is provided as well. Heating and hot water are included in the service charge also.



A rare opportunity to purchase a large two bedroom flat with over 1200 sqf of space right in the heart of Chiswick.

The property looks over Turnham Green and has the benefit of 2 private balconies with one being a south facing aspect. The property is in fantastic condition allowing buyers to move right in with no major works needed from the outset.

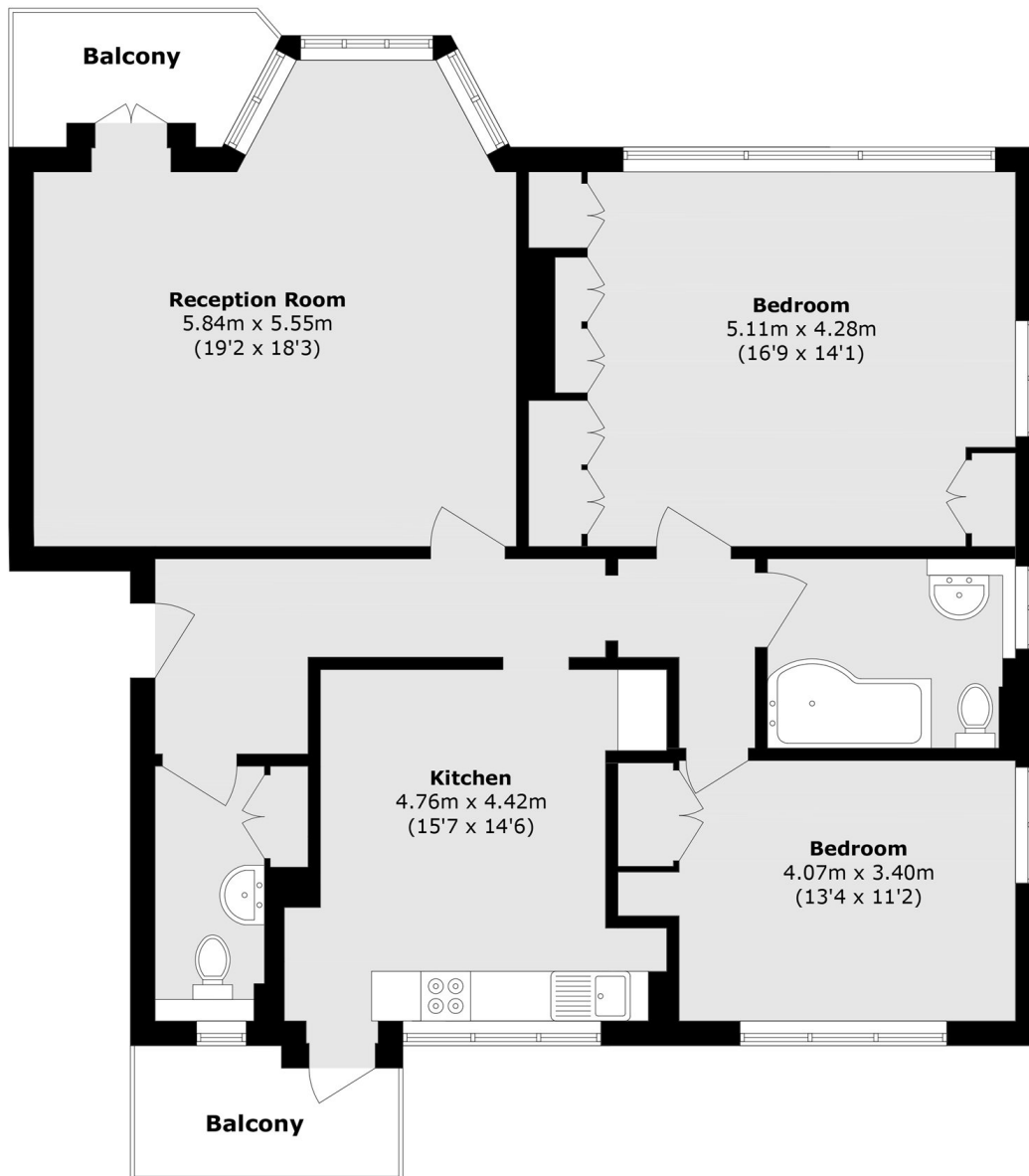
Goodwood House also comes with a share of the freehold meaning buyers have greater control over any changes they wish to make to the flat and private parking is provided as well. Heating and hot water are included in the service charge also. Goodwood House is a very well managed and maintained apartment block, in a prime location only moments from the wonderful array of High Street brands, restaurants, boutiques and supermarkets on Chiswick High Road, and has easy access to either Chiswick Park or Turnham Green stations.

- Two Double Bedrooms • Share Of Freehold • Off Street Parking •
- First Floor • Central Chiswick Location • Two Private Balconies •
- Over 1200sqf •



# FLETCHERS

ESTATE AGENTS



Total area (approx.): 117.3 sq. m (1262.6 sq. ft)  
Balcony area (approx.): 8.1 sq. m (87.1 sq. ft)

Fletchers Chiswick Turnham Green Sales  
58 Turnham Green Terrace  
London  
W4 1QP  
020 8987 3000  
[chiswicksales@fletcherestates.com](mailto:chiswicksales@fletcherestates.com)

Energy Rating: C We aim to make our particulars both accurate and reliable. However they are not guaranteed; nor do they form part of an offer or contract. If you require clarification on any points then please contact us, especially if you're traveling some distance to view. Please note that appliances and heating systems have not been tested and therefore no warranties can be given as to their good working order