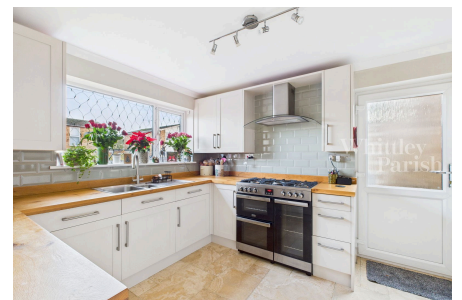
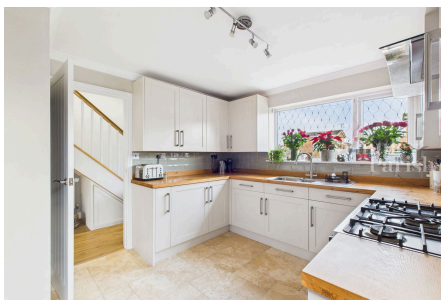


De Morley Close, Roydon

Guide Price £300,000 - £325,000

3 2 1



Measuring over 1000 square feet and extremely well presented throughout, this three bedroom detached family home is positioned in the desirable location of Roydon less than 1.5 miles from the amenities of Diss town centre.

Key Features

- Guide Price £300,000-£325,000
- Over 1000 square feet of accommodation
- Welcoming entrance hall with oak laminate flooring
- Bespoke kitchen with solid wood worktops, travertine tile flooring, and an integrated dishwasher
- Spacious open plan lounge diner with French doors to the garden
- En suite shower room & family bathroom
- UPVC gutters and fascias replaced in 2024
- Gas central heating and UPVC double glazed windows and doors
- Less than 1.5 miles to Diss Town Centre
- Freehold - EPC Rating tbc - Council Tax Band C - Mains drainage

