

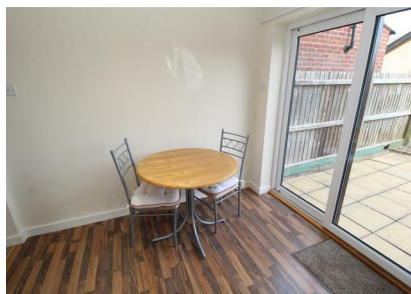


Boeing Way, Bury St. Edmunds, IP28 7RJ

Rent - £1,200 PCM Deposit - £1,384

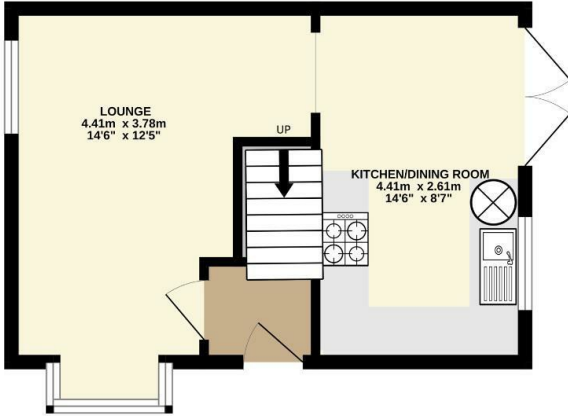
This modern two bedroom property is located only 10 minutes from RAF Mildenhall and 10 minutes from RAF Lakenheath. Offered furnished and ready to move into! The accommodation comprises of open plan kitchen/diner, lounge, two bedrooms and family bathroom.

- SEMI DETACHED HOUSE
- 2 BEDROOMS
- OPEN PLAN KITCHEN/DINER
- FAMILY BATHROOM
- GARAGE, PARKING & ENCLOSED REAR GARDEN
- CLOSE TO RAF BASES
- GAS HEATING & ENERGY RATING - C
- APPROXIMATE SIZE - 635 SQFT
- COUNCIL TAX BAND - B
- AVAILABLE EARLY MARCH

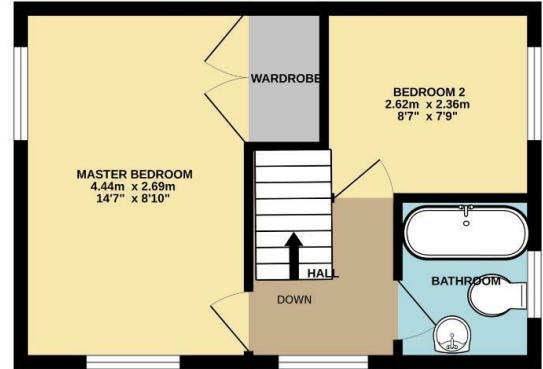


Council Tax Band: B - EPC Rating: C 72

GROUND FLOOR
29.0 sq.m. (312 sq.ft.) approx.



1ST FLOOR
28.2 sq.m. (304 sq.ft.) approx.



TOTAL FLOOR AREA : 57.2 sq.m. (616 sq.ft.) approx.

Whilst every attempt has been made to ensure the accuracy of the floorplan contained here, measurements of doors, windows, rooms and any other items are approximate and no responsibility is taken for any error, omission or mis-statement. This plan is for illustrative purposes only and should be used as such by any prospective purchaser. The services, systems and appliances shown have not been tested and no guarantee as to their operability or efficiency can be given.
Made with Metropix ©2026

