



**Putney Hill, SW15**

**£750,000**

**Dexters**



## Putney Hill, SW15

Situated within an attractive period-style mansion block on the sought-after Putney Hill, this spacious and well-proportioned apartment offers over 1,178 sq ft of accommodation. The property features a generous reception/dining room with large windows overlooking the communal grounds, a separate kitchen, four bedrooms, and a family bathroom, making it ideal for families, professionals or those working from home.

Lower Park enjoys a highly desirable location moments from the open green spaces of Putney Heath and within easy reach of Putney High Street's excellent selection of shops, cafés and restaurants. Commuters are well served by both Putney mainline station, providing regular services to London Waterloo, and East Putney Underground station on the District line, offering convenient access across Central London. Putney is also renowned for its riverside walks, excellent schools and vibrant community atmosphere.

### Features

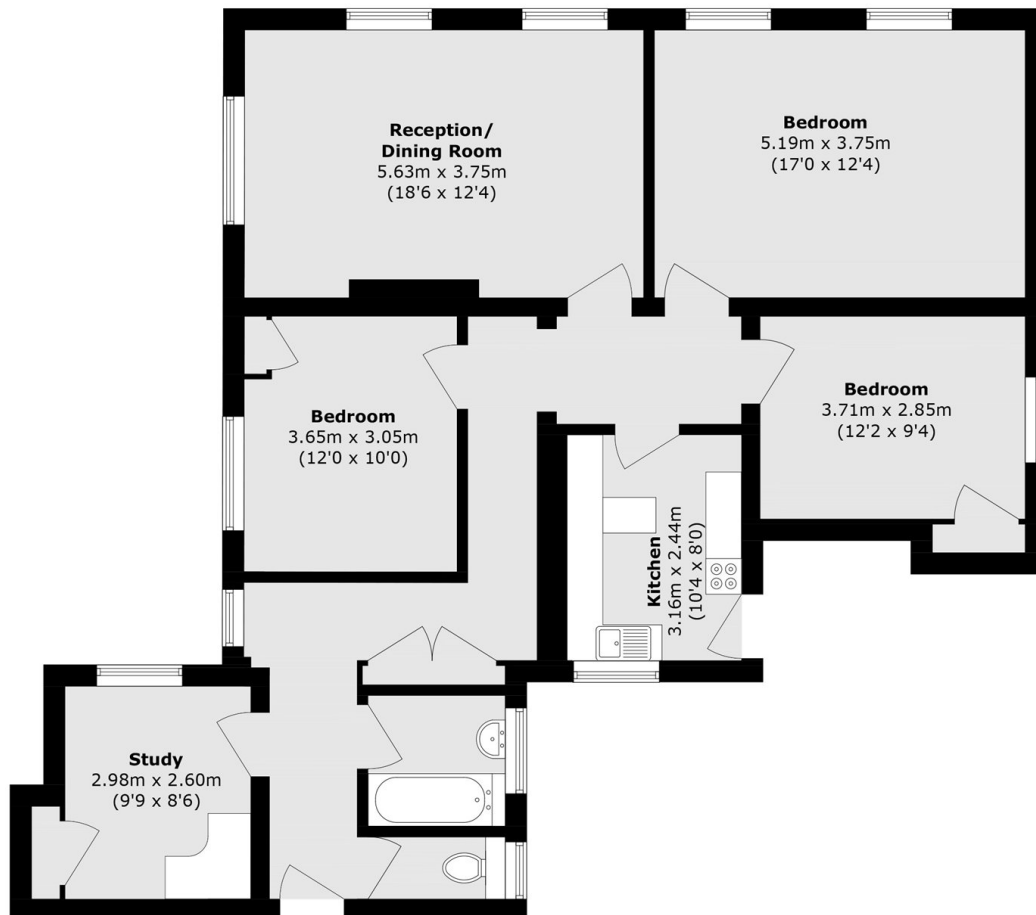
- 1,178 sq ft
- Four Bedrooms
- One Bathroom
- Chain Free
- Communal Gardens
- Upper West Putney Location







# Putney Hill, London, SW15



Total area (approx.): 109.5 sq. m (1178.6 sq. ft)