



Northweald Lane, KT2

£1,200,000

An attractive townhouse that has been extended, offering larger and more flexible accommodation than similar local houses. This bright and airy home provides exceptional space, with the potential for up to six bedrooms, if needed. Currently, the layout comprises five well proportioned bedrooms, a spacious first floor reception room, a ground floor utility and a charming open-plan kitchen-living area that enhances the sense of space and natural light.

Northweald Lane is located within the Royal Park Development off Dukes Avenue, ideally located near the shops on Ham Parade and just 500 yards from Ham Common and the River Thames. Richmond Park's Ham Gate is also moments away, alongside both Richmond and Kingston town centres which are easily accessible for further shopping, bars and restaurants. The property is also falls within the catchment for several Ofsted-rated Outstanding schools, making it ideal for families.

Features

- Five Bedrooms
- Three Bathrooms
- Open-Plan Kitchen-Dining
- Garage
- Off Street Parking
- Great Location



Northweald Lane, KT2

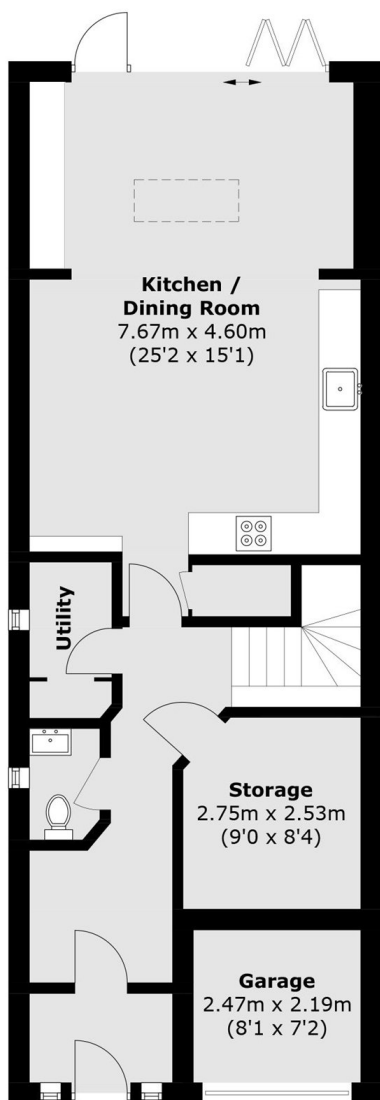
The extended ground floor features a great open-plan space, cleverly converted garage into ample internal storage space, still having garage space accessible from the front, large bi-fold doors leading out to the private garden. Additionally, there is a utility room and a ground floor WC for added convenience.

On the first floor is a spacious reception room, with french doors leading to a spacious balcony, as well as a two double bedroom's and modern family bathroom. On the second floor is the principal bedroom with fitted wardrobes and a en suite shower room and two further immaculate bedrooms.

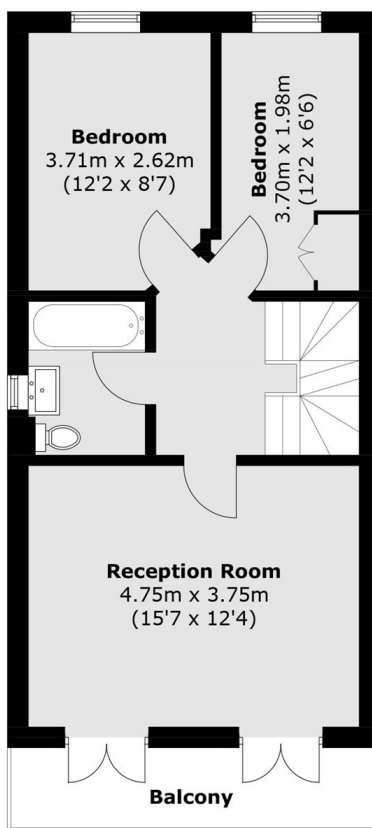
To the front of the property, there is a private driveway offering off-street parking for two cars. At the back, you'll find a landscaped garden, featuring an area laid to lawn with established flower and shrub borders. The remainder of the garden is laid to patio.



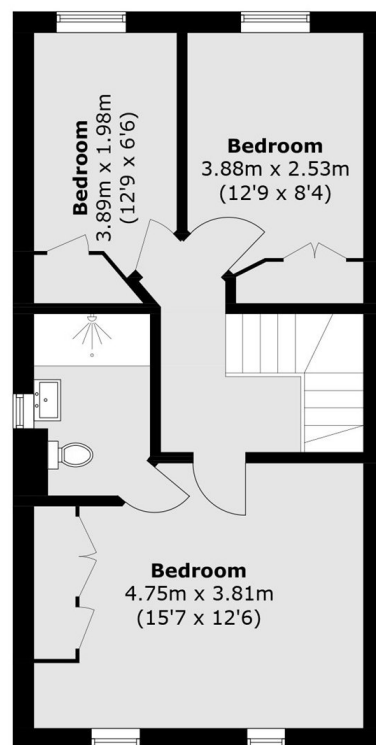
Northweald Lane, Kingston Upon Thames, KT2



Ground Floor



First Floor



Second Floor

Approx Internal Area: 156.8 sq. m (1,687.7 sq. ft)

Garage: 5.2 sq. m (55.9 sq. ft)

Total: 162.0 sq. m (1,743.6 sq. ft)

Balcony : 6.0 sq. m (64.5 sq. ft)