

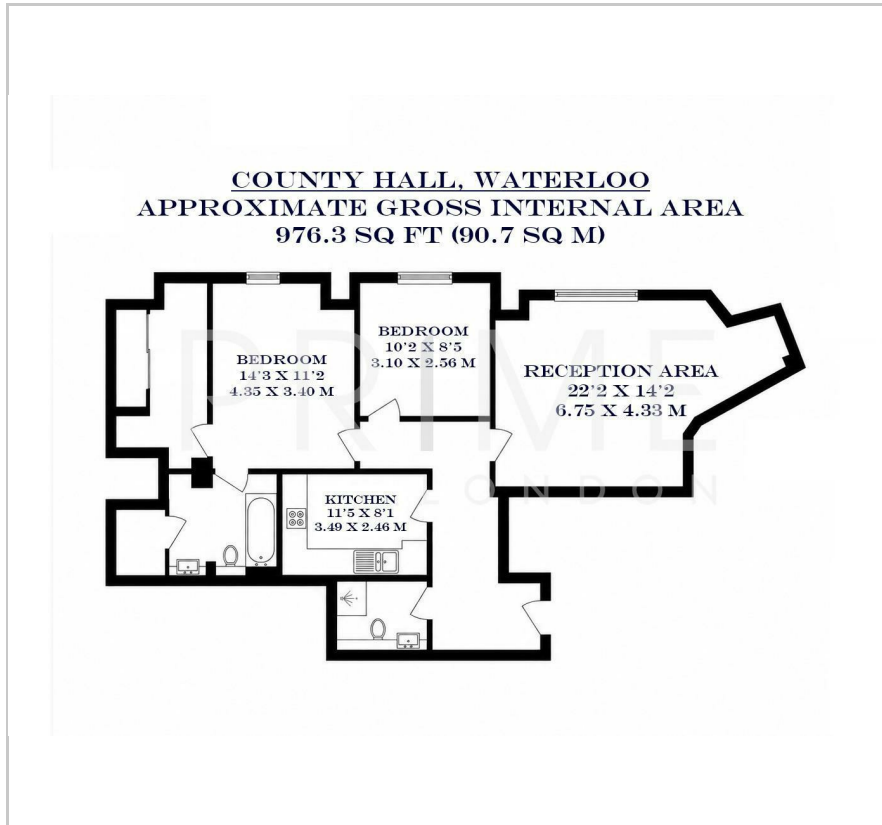
## North Block, County Hall Apartments

1c Belvedere Road, South Bank, SE1 7GF

£727 Per Week



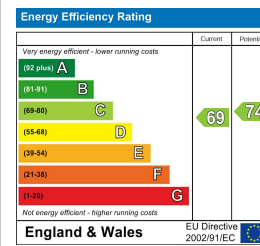
## Floor Plan



## Area Map



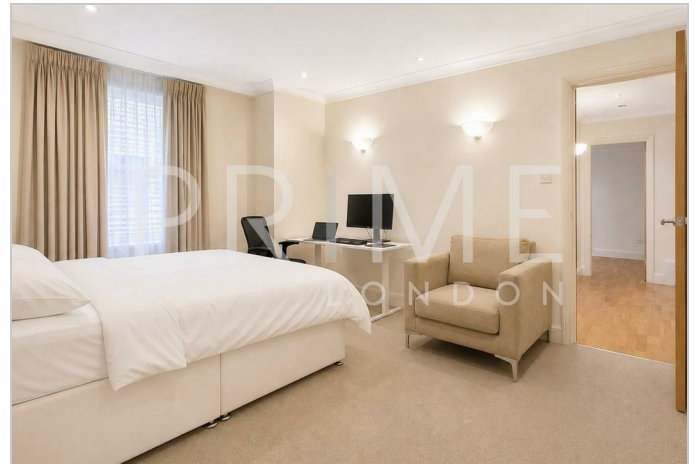
## Energy Efficiency Graph



## Viewing

By appointment. Contact us on 0207 928 6663 if you wish to arrange a viewing appointment for this property, or require further information.

- Two bedroom apartment
- Secure parking space
- Onsite gymnasium and swimming pool
- 976.3 sq ft (90.7 sqm)
- 24 hour concierge
- Walking distance to London Eye & Big Ben



This spacious two bedroom apartment spanning 976.3 sq ft (90.7 sqm), situated within the sought-after County Hall development on London's vibrant South Bank is available to lease through Prime London. The property also benefits from a secure parking space.

The property offers a generous and bright reception area providing an ideal space for both relaxing and entertaining. The separate kitchen is well-proportioned and conveniently positioned adjacent to the living space.

The principal bedroom is particularly spacious, and benefits from a large walk-in wardrobe space as well as an en-suite bathroom. The second bedroom is generously sized and is served by a further family bathroom along the hall.

County Hall itself is located immediately by the London Eye, and residents enjoy the exclusive use of the on-site facilities, namely a 24 hour concierge service and leisure complex complete with indoor heated swimming pool, gymnasium and spa.

The development is ideally situated for travel into the City, Canary Wharf and West End as Waterloo and Westminster stations are close by.



These particulars, whilst believed to be accurate are set out as a general outline only for guidance and do not constitute any part of an offer or contract. Intending purchasers should not rely on them as statements of representation of fact, but must satisfy themselves by inspection or otherwise as to their accuracy. No person in this firm's employment has the authority to make or give any representation or warranty in respect of the property.