

46b Hartburn Village,

Guide Price £825,000

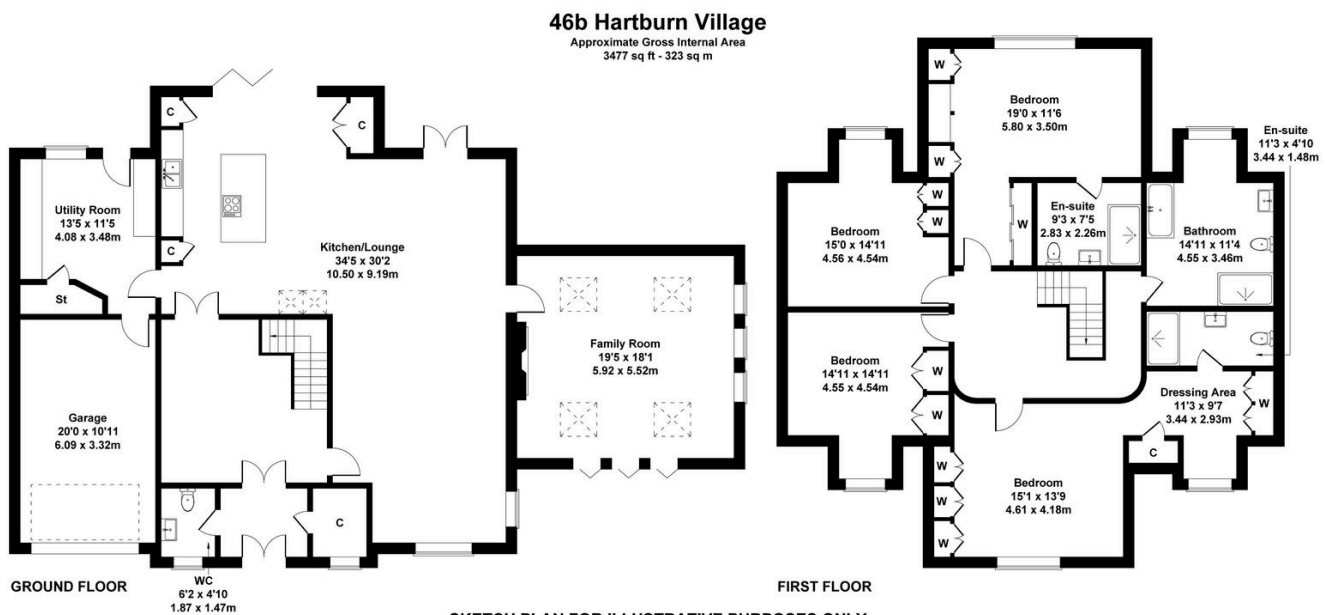
 4  4  2



The Yorkshire Property Agency is delighted to introduce this fabulous four-bedroom family home located in the popular Stockton village of Hartburn. Boasting a stylish high-spec finish and a fantastic open-plan layout, 46B Hartburn makes an ideal family home.

Key Features

- Fabulous four-bedroom family home
- Stylish high-pec finish
- Secure electric gates
- Integral garage
- A short walk to the local amenities
- Popular Stockton village of Hartburn
- Modern open-plan layout
- Off-street parking for multiple cars
- Council tax band G
- Chain-free sale



SKETCH PLAN FOR ILLUSTRATIVE PURPOSES ONLY

All measurements walls, doors, windows, fittings and appliances, their sizes and locations, are approximate only. They cannot be regarded as being a representation by the seller, nor their agent.

Produced by Potterplans Ltd. 2025