



PER MONTH

**£2,200 Per Month**

**54 Folgate Street**

London, E1 6UN

We are excited to offer for rent this 1-bedroom ground floor apartment located just a short walk from Spitalfields Market and Liverpool Street station.

The property comprises a large living area, separate fully-fitted kitchen and a double bedroom with ample storage. There is wood flooring throughout, and it also has the benefit of an additional storage room just off the hallway.

Perfectly positioned near Spitalfields Market, this property places you in one of London's most dynamic neighbourhoods. Over the past thirty years or so, the area has transformed into a thriving hub for creative and tech professionals, drawn by nearby Shoreditch and the City. Stylish cafés, independent boutiques and acclaimed restaurants create a really vibrant atmosphere. Beautifully restored historic buildings sit alongside striking modern developments, reflecting thoughtful regeneration. Families are equally well served, with an excellent choice of highly regarded nurseries, primary schools and secondary colleges nearby, making this an exceptional long-term investment and lifestyle opportunity.

This flat presents a wonderful opportunity to embrace city living in a comfortable and well-designed space.

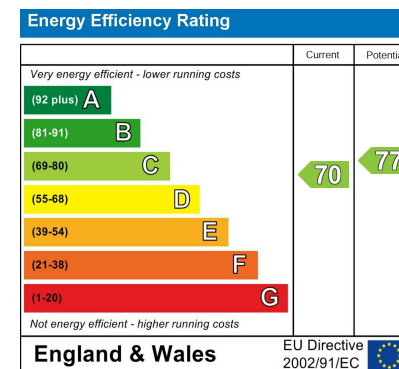
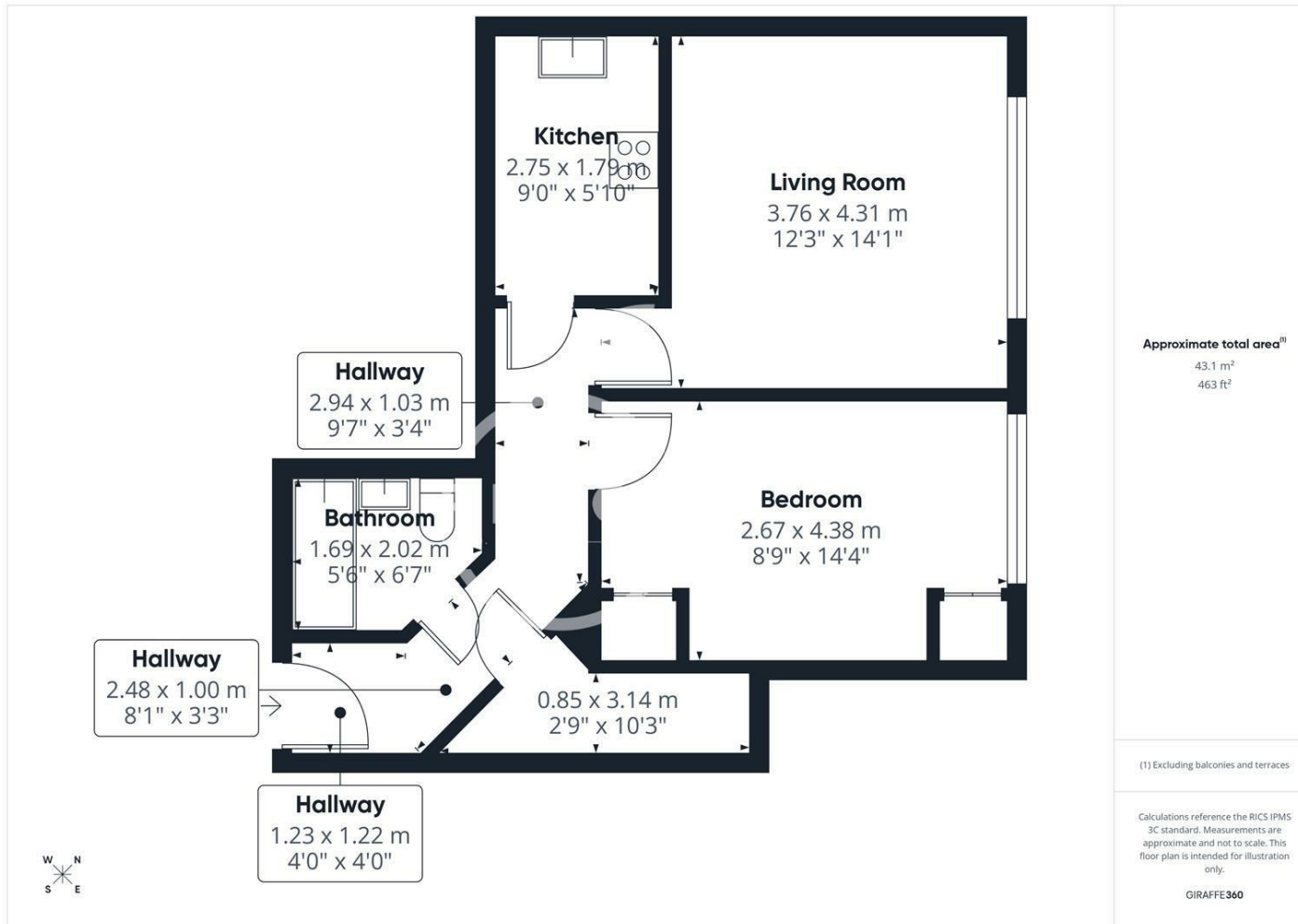
Unfurnished

Available end July

5 Weeks Deposit: £2,538.46







Agents Note: Whilst every care has been taken to prepare these particulars, they are for guidance purposes only. All measurements are approximate and are for general guidance purposes only and whilst every care has been taken to ensure their accuracy, they should not be relied upon and potential buyers/tenants are advised to recheck the measurements

**OFFICE ADDRESS**  
88 Cheshire Street  
London  
E2 6EH

**OFFICE DETAILS**  
0207 739 6969  
info@peachproperties.com  
www.peachproperties.com