

**ROYAL CREST AVENUE, E16**

**£2,250 pcm**

Available 31st May | 1 Bedroom 1 Bathroom | 1st Floor | Furnished | Spacious Reception Room | 24 Hour Concierge & Security | Residents Gym and Pool | Walking distance to Pontoon Dock DLR

**Internal area:**

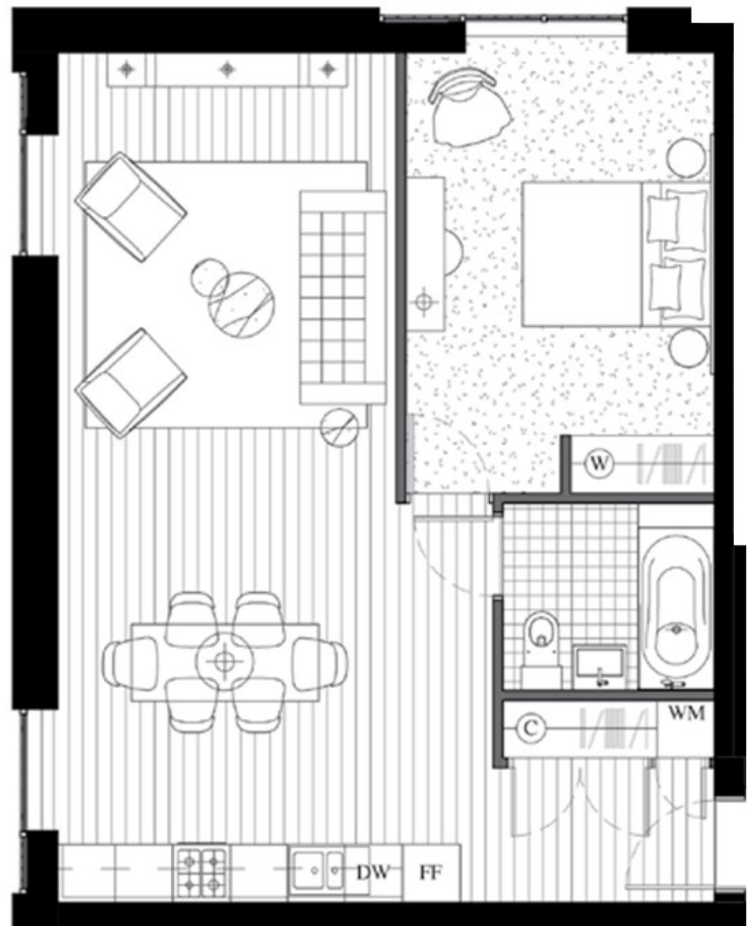
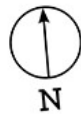
60.6 sq.m / 652 sq.ft

**Living area:**

8840 mm x 4540 mm

**Bedroom 1:**

4320 mm x 3210 mm



**LiFE RESIDENTIAL**

16 Royal Crest Avenue,  
London, E16 2TQ  
Sales: 020 3846 3332  
Lettings: 020 3846 3311

Energy Rating: B. We aim to make our particulars both accurate and reliable. However they are not guaranteed; nor do they form part of an offer or contract. If you require clarification on any points then please contact us, especially if you're traveling some distance to view. Please note that appliances and heating systems have not been tested and therefore no warranties can be given as to their good working order.