



## BEAUFORT STREET, SW3

£600,000

Two bedrooms  
Close to the River Thames  
Moments from the Kings Road  
Communal garden  
Good condition  
Energy rating c

@marshandparsons  
marshandparsons.co.uk

MARSH &  
PARSONS



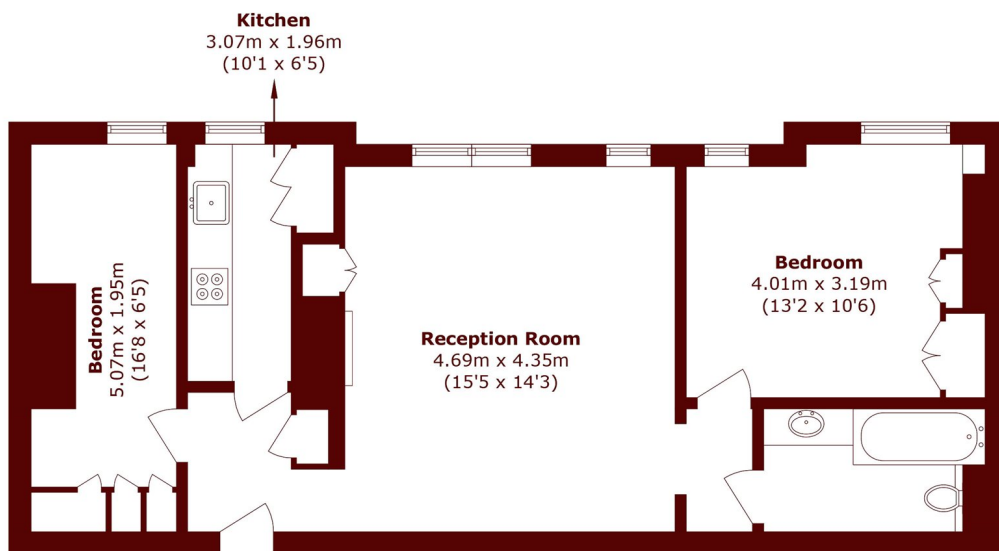
# ABOUT THE PROPERTY

Situated within the well-maintained Burleigh House, this bright and spacious two-bedroom flat offers comfortable modern living in a highly convenient location on vibrant Beaufort Street. Residents of Burleigh House benefit from access to a beautifully maintained communal garden.

The property features a generous reception room filled with natural light, providing an ideal space for both relaxing and entertaining. The separate, fully fitted kitchen offers ample storage and worktop space, making it practical for everyday living.



# STEP INSIDE BEAUFORT STREET



## Third Floor

Total area (approx.): 63.8 sq. m (686.7 sq. ft)

Chelsea  
020 7591 5580

Energy Rating: C We aim to make our particulars both accurate and reliable. However, they are not guaranteed; nor do they form part of an offer or contract. If you require clarification on any points then please contact us, especially if you're traveling some distance to view. Please note that appliances and heating systems have not been tested and therefore no warranties can be given as to their good working order

MARSH &  
PARSONS