

Middle Lane, TW11

£1,995 Per calendar month

Dexters



Middle Lane, TW11

Located in the heart of Teddington is this generous two double bedroom, two bathroom apartment. The property is incredibly spacious and also offers a private balcony.

Entering into the property you are greeted by the spacious reception room with double doors onto the wrap around balcony. This is the perfect entertaining space and leads onto the modern kitchen offering ample natural light throughout.

There is an impressive master bedroom with an en suite, an additional second bedroom and a large family bathroom.

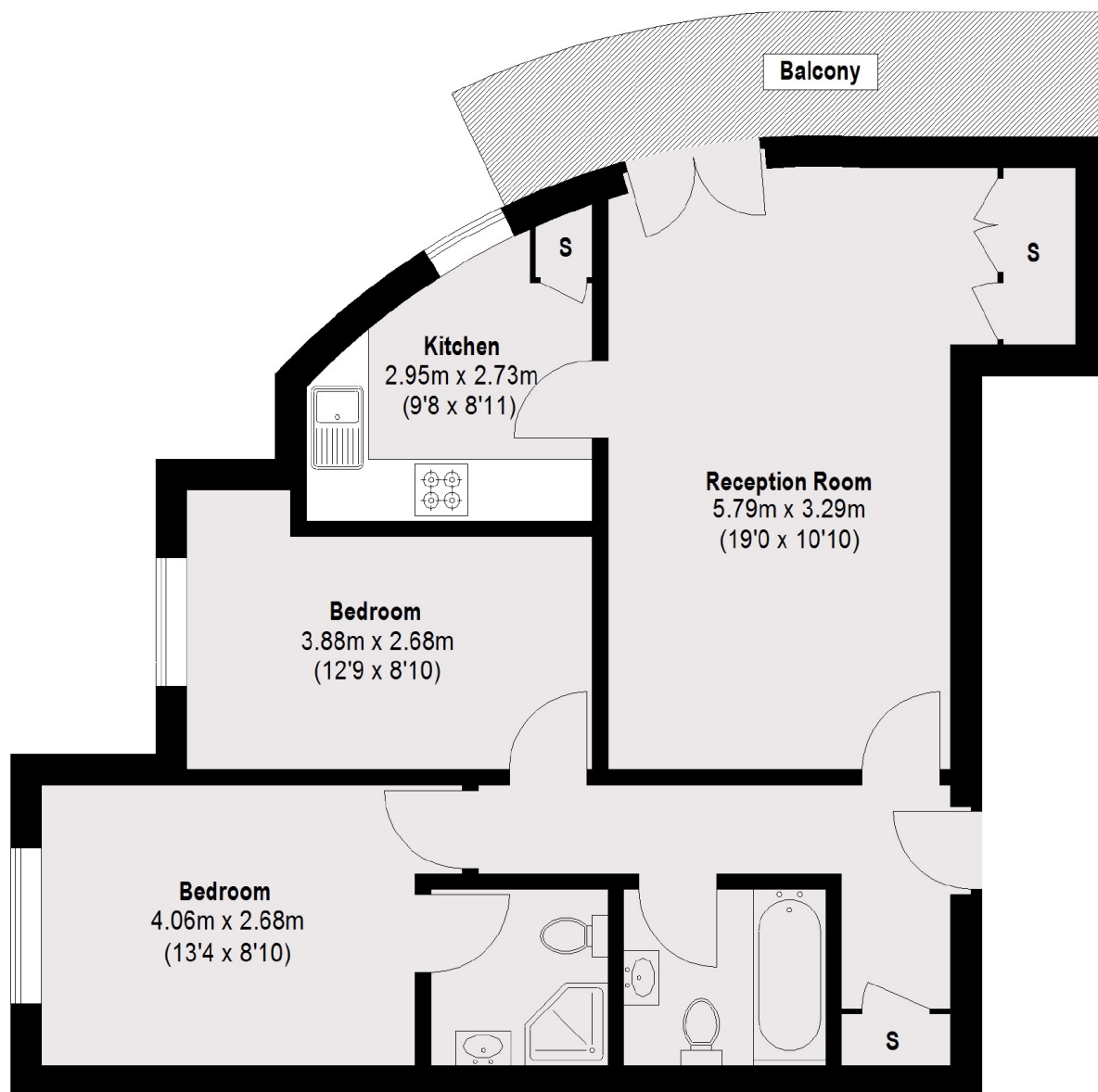
Located in the heart of Teddington; Bushy Park, the High Street, Teddington mainline station, and the riverside are all within easy walking distance. The area also offers an abundance of primary and secondary schools, both state and private education.

Features

- Modern Apartment Block
- Spacious Living Space
- Two Double Bedrooms
- Two Bathroom Suites
- Private Balcony
- Central Location



Middle Lane, Teddington, TW11



Second Floor

Total area (approx.): 63.12 sq. m (679 sq. ft)

Balcony: 7.38 sq. m (80 sq. ft)