



Price
£250,000

Freehold

1x  1x  1x 

**Birchanger Road,
London, SE25**

OVER 60?

Secure this property
for up to **59% less!**

cubitt & west
Helping you move forwards



Main features

- Allocated Parking
- Direct access to communal garden
- Great Transport Links for commuters
- Close to Local Amenities
- Excellent opportunity for first-time buyers or investors

Accommodation

GROUND FLOOR

Porch

Living Area: 11'8 x 10'10 (3.56m x 3.30m)

Kitchen: 11'8 x 5'11 (3.56m x 1.80m)

FIRST FLOOR

Landing

Bathroom: 7'2 x 5'0 (2.19m x 1.53m)

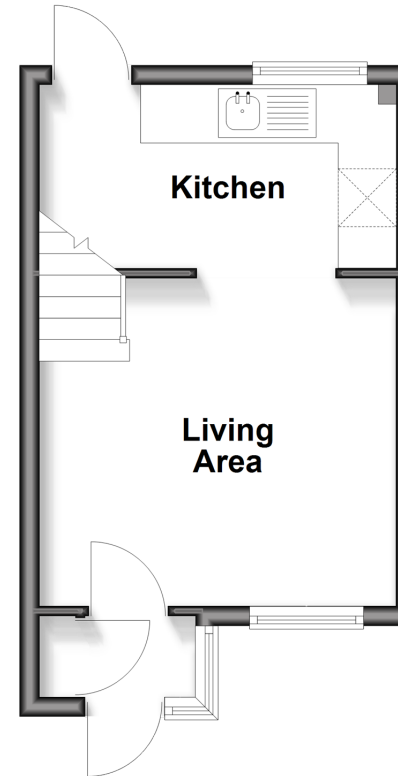
Bedroom : 11'9 x 11'4 (3.58m x 3.46m)

OUTSIDE

Communal Garden

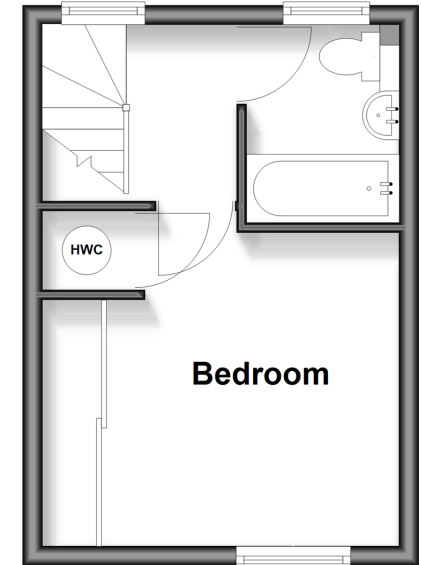
Ground Floor

Approx. 21.0 sq. metres (226.5 sq. feet)



First Floor

Approx. 19.6 sq. metres (210.5 sq. feet)



Call Shirley - 020 8654 3037 ■ cubittandwest.co.uk

- Legal advice should be taken to verify fixtures/fittings, planning, alterations and/or lease details
- Appliances & services are untested, dimensions are approximate and floor plans are not to scale
- Through a Homewise Home For Life Plan people aged 60+ can secure this property for up to 59% less, by purchasing a Lifetime Lease



21712204/20260303/SR/PH