



# PM ESTATES

Property Sales & Lettings



## Riverside Wharf

Bishops Stortford, Hertfordshire, CM23 3GP

£1,650<sup>PCM</sup>

[www.pm-estates.co.uk](http://www.pm-estates.co.uk)

# Riverside Wharf

Bishops Stortford, Hertfordshire, CM23 3GP

## Overview

- Gas and Water Included in The Rental Price
- Third Floor Apartment
- Two Double Bedrooms
- Family Sized Bathroom and En-Suite
- Fully Fitted Kitchen
- Integrated Appliances
- Offered Furnished
- Allocated Parking
- Energy Rating: B
- Council Tax Band: C



## Description

PM Estates are pleased to introduce this furnished modern two double bedroom apartment to the rental market within the locally renowned and in high demand, Riverside Wharf development located in the very heart of Bishops Stortford town centre.

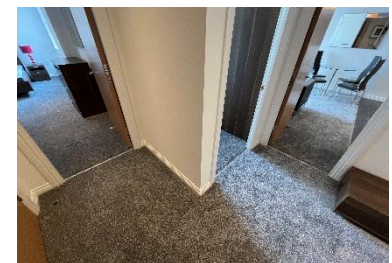
Gas and Water Included in The Rental Price.

The development itself is just a stones' throw away from the mainline rail station which is just a 2-minute walk door-to-door. Bishops Stortford rail station offers direct services into London Liverpool Street, Cambridge City Centre and Stansted Airport.

This bright and airy apartment is spacious throughout with an L-shaped composition which produces a unique and appealing living space within. The open plan living area benefits from a double feature picture window and contains a sleek fully fitted wooden kitchen with integrated appliances inclusive of a full-size dishwasher. The property comes with allocated parking.

Included within this property are 2 sizable double bedrooms with the master, home to a private en-suite bathroom as well as the inclusion a full family sized bathroom.

The Riverside Wharf Development has stood the test of time for more reasons than one and is in close proximity are various local amenities inclusive of the M&S food hall, Sainsburys superstore and the locally renowned and highly fashionable EAT17 restaurant and food market filled with fresh produce and a vibrant atmosphere as well as the Port Jackson Wetherspoons built into the development itself.



Score	Energy rating	Current	Potential
92+	A		
81-91	B	83 B	83 B
69-80	C		
55-68	D		
39-54	E		
21-38	F		
1-20	G		

# Floor Plan



7 Riverside Walk, South Street, Bishop's Stortford, Herts CM23 3AG

Tel: 01279 654646

Email: [info@pm-estates.co.uk](mailto:info@pm-estates.co.uk)

[www.pm-estates.co.uk](http://www.pm-estates.co.uk)

PM Estates wish to advise prospective purchasers that we have not checked the services or appliances. The sales particulars have been prepared as a guide only; any floor-plan or map is for illustrative purposes only. PM Estates, for themselves and for the vendors or lessors of this property whose agents they are give notice that: the particulars have been produced in good faith; do not constitute any part of a contract; no person in the employment of PM Estates has any authority to make or give any representation of warranty in relation to this property.

P820