



Water Lane, EC3R

£7,200 Per calendar month

A south facing, two double bedroom apartment on the riverside of the prestigious Sugar Quay Development. Each bedroom has its own bathroom giving the feel of a suite.

Sugar Quay is next to Tower of London and close to Monument and Tower Hill Underground Stations which are both just over a quarter mile away. Each room in the property looks south over the River giving some of London's very best views.

Features

- Two Double Bedrooms
- Two Bathrooms
- Direct River Views
- Furnished
- Concierge
- Resident's Health Club



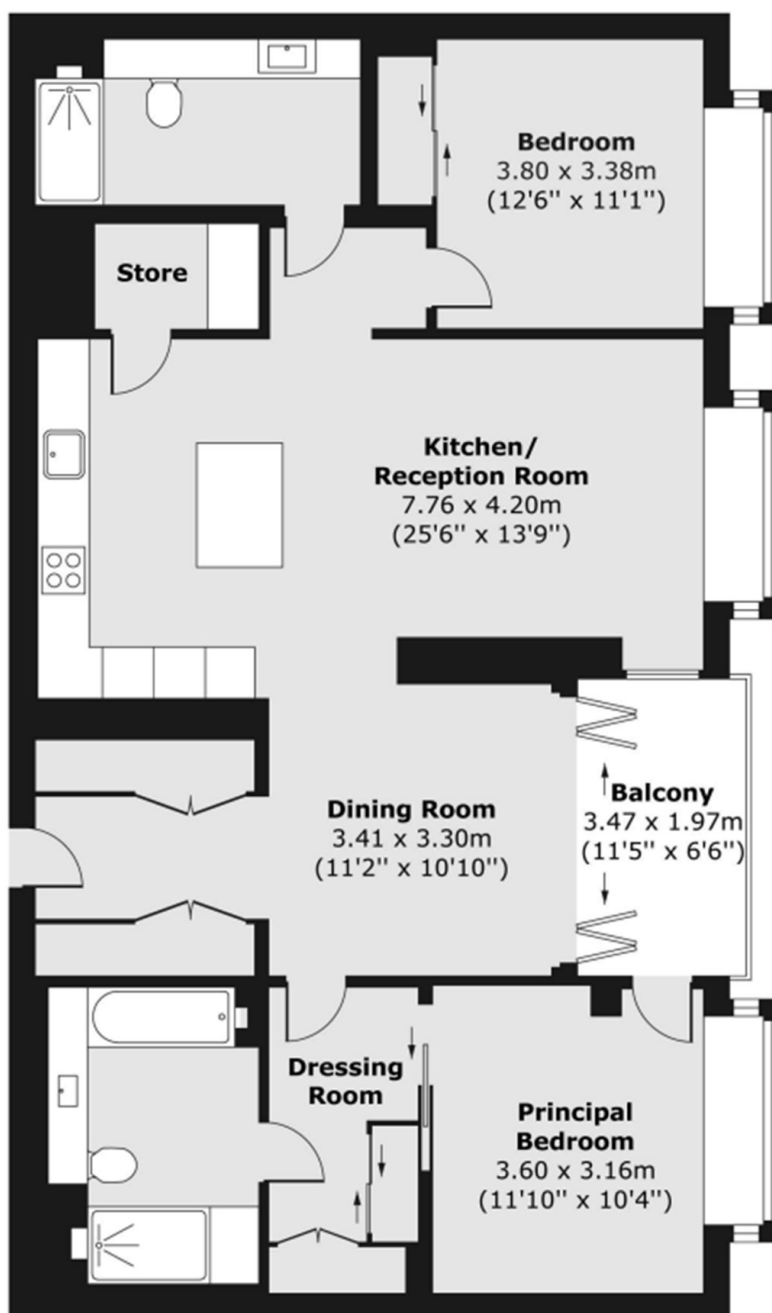
Water Lane, EC3R

A south facing, two double bedroom luxury apartment on the riverside of the prestigious Sugar Quay Development. Each bedroom has it's own bathroom giving the feel of a suite. There is a 24 hour concierge, swimming pool, gym and various areas to socialise in, making this property perfect for busy professionals.



Water Lane, London, EC3R

First Floor



Total area (approx.) 105.62 sq. m (1,137 sq. ft)
Balcony area (approx.) 6.84 sq. m (74 sq. ft)